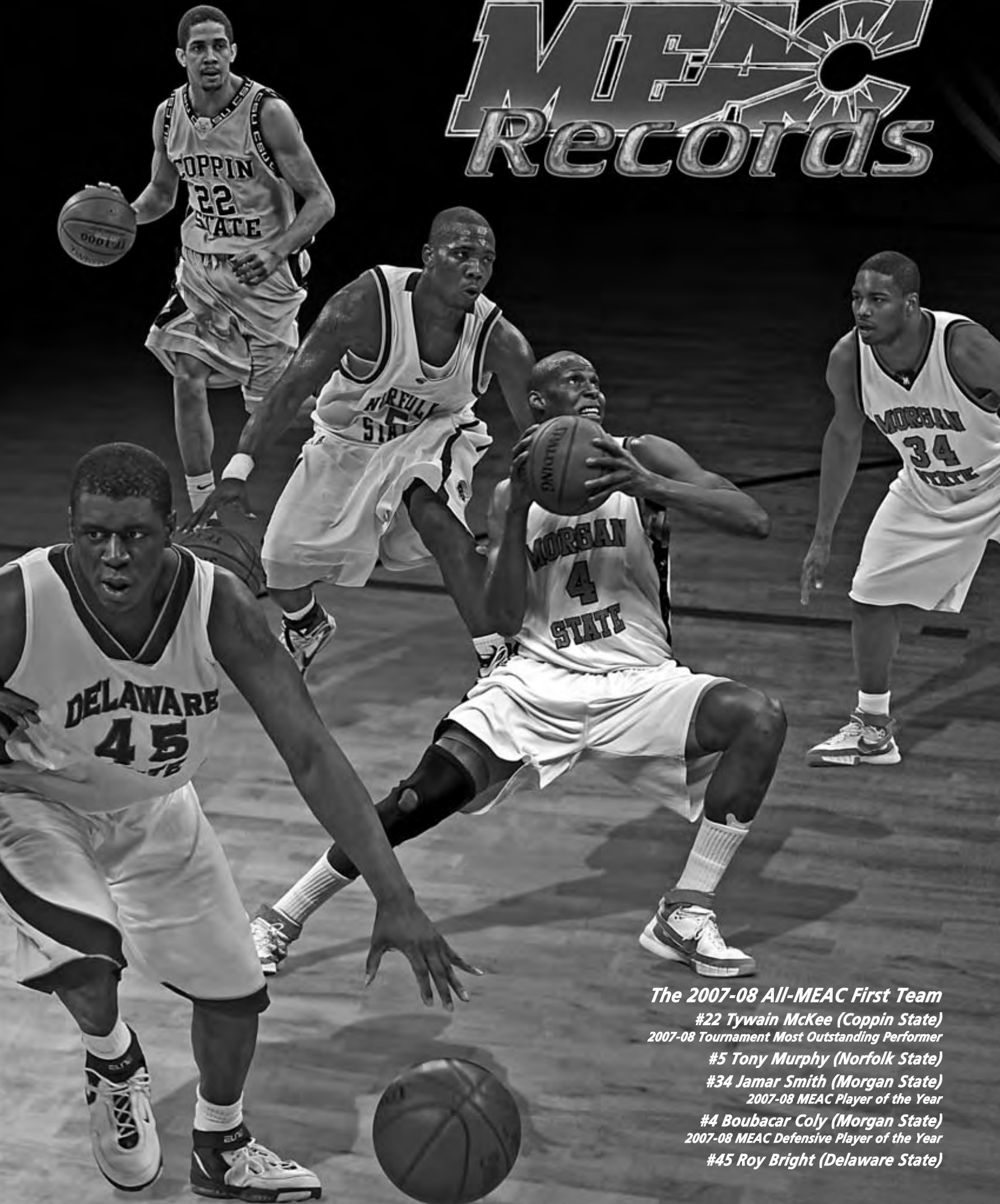


# MEAC Records



*The 2007-08 All-MEAC First Team*

*#22 Tywain McKee (Coppin State)*

*2007-08 Tournament Most Outstanding Performer*

*#5 Tony Murphy (Norfolk State)*

*#34 Jamar Smith (Morgan State)*

*2007-08 MEAC Player of the Year*

*#4 Boubacar Coly (Morgan State)*

*2007-08 MEAC Defensive Player of the Year*

*#45 Roy Bright (Delaware State)*



# Year-by-Year Conference Standings

## Men's Basketball

	CONFERENCE			OVERALL				CONFERENCE			OVERALL				CONFERENCE			OVERALL		
	W	L	PCT.	W	L	PCT.		W	L	PCT.	W	L	PCT.		W	L	PCT.	W	L	PCT.
<b>1971-72</b>							<b>1979-80</b>							<b>1986-87</b>						
N.C. A&T	9	3	.750	7	6	.739	Howard	19	7	.731	19	7	.731	Howard	13	1	.929	24	4	.857
Howard	8	4	.667	1	1	.640	Delaware State	15	11	.577	15	11	.577	N.C. A&T State	12	2	.857	21	5	.808
Morgan State	7	5	.583	15	8	.652	S.C. State	10	16	.385	10	16	.385	S.C. State	9	5	.643	13	14	.481
Maryland E. Shore	7	5	.583	14	6	.700	Morgan State	7	15	.318	7	15	.318	Coppin State	7	6	.538	8	19	.296
S.C. State	6	6	.500	16	10	.615	N.C. A&T State	8	18	.308	8	18	.308	Bethune-Cookman	6	8	.429	9	18	.333
N.C. Central	3	9	.250	4	19	.174	N.C. Central	7	17	.292	7	17	.292	Morgan State	5	9	.357	8	19	.296
Delaware State	2	10	.167	7	15	.31	Florida A&M	5	21	.192	5	21	.192	Delaware State	3	11	.214	4	23	.148
							*Maryland E. Shore	15	8	.652	15	8	.652	Maryland E. Shore	0	13	.000	2	24	.077
							*Not Eligible For Championship							Florida A&M	0	0	.000	12	15	.444
<b>1972-73</b>							<b>1980-81</b>							<b>1987-88</b>						
Maryland E. Shore	10	2	.833	20	2	.909	N.C. A&T State	7	3	.700	20	6	.769	N.C. A&T State	16	0	1.000	24	2	.923
Howard	9	3	.750	19	4	.826	Florida A&M	6	4	.600	16	10	.615	Florida A&M	11	5	.688	20	7	.741
Morgan State	8	4	.667	18	7	.720	Howard	6	4	.600	14	11	.560	S.C. State	10	6	.625	15	12	.556
N.C. A&T State	7	5	.583	13	11	.542	Bethune-Cookman	4	6	.400	12	13	.480	Howard	9	7	.563	15	12	.556
S.C. State	3	9	.250	13	12	.520	S.C. State	4	6	.400	11	14	.440	Coppin State	8	7	.533	13	14	.481
Delaware State	3	9	.250	10	13	.435	Delaware State	3	7	.300	8	17	.320	Morgan State	7	8	.467	13	18	.419
N.C. Central	2	10	.167	5	17	.227								Maryland E. Shore	5	11	.312	7	20	.259
							<b>1981-82</b>							Bethune-Cookman	4	12	.250	6	21	.222
							N.C. A&T State	10	2	.833	17	8	.680	Delaware State	1	15	.063	3	24	.111
							Howard	9	3	.750	15	10	.600							
							S.C. State	7	5	.583	10	14	.417	<b>1988-89</b>						
							Florida A&M	5	7	.417	9	16	.360	S.C. State	14	2	.875	25	8	.758
							Delaware State	4	8	.333	13	12	.520	Florida A&M	12	4	.750	20	10	.667
							Bethune-Cookman	4	8	.333	9	17	.346	Coppin State	11	5	.688	18	11	.621
							Maryland E. Shore	3	9	.250	6	19	.240	Morgan State	9	7	.563	15	14	.517
														Bethune-Cookman	8	8	.500	12	16	.429
							<b>1982-83</b>							Delaware State	6	10	.375	11	17	.393
							Howard	11	1	.917	18	8	.692	N.C. A&T State	6	10	.375	9	18	.333
							N.C. A&T State	9	3	.750	20	7	.741	Howard	5	11	.313	9	19	.321
							S.C. State	5	7	.417	12	15	.444	Maryland E. Shore	1	15	.063	1	26	.037
							Maryland E. Shore	5	7	.417	9	18	.333							
							Delaware State	5	7	.417	8	18	.308	<b>1989-90</b>						
							Florida A&M	4	8	.333	7	20	.259	Coppin State	15	1	.938	23	6	.793
							Bethune-Cookman	3	9	.250	5	20	.200	Florida A&M	13	3	.813	17	10	.630
														Delaware State	9	7	.563	14	13	.519
							<b>1983-84</b>							Bethune-Cookman	8	8	.500	10	17	.370
							N.C. A&T State	9	1	.900	20	6	.769	S.C. State	8	8	.500	12	15	.444
							Howard	7	3	.700	14	13	.513	N.C. A&T State	6	10	.375	11	15	.423
							S.C. State	6	4	.600	13	15	.464	Howard	5	11	.313	8	19	.296
							Delaware State	3	7	.300	11	15	.423	Morgan State	4	12	.250	8	19	.296
							Maryland E. Shore	3	7	.300	7	20	.259	Maryland E. Shore	4	12	.250	10	17	.370
							Bethune-Cookman	2	8	.200	6	21	.222							
							*Florida A&M	0	0	.000	7	19	.369	<b>1990-91</b>						
							*Not Eligible For Championship							Coppin State	14	2	.875	19	11	.633
							<b>1984-85</b>							S.C. State	10	6	.625	13	15	.464
							N.C. A&T State	10	2	.833	17	9	.654	Delaware State	10	6	.625	19	11	.633
							Howard	9	3	.750	15	11	.577	N.C. A&T State	10	6	.625	17	10	.630
							Delaware State	8	4	.667	11	16	.407	Florida A&M	9	7	.563	17	14	.548
							S.C. State	7	4	.636	11	15	.423	Howard	7	9	.438	8	20	.286
							Bethune-Cookman	4	7	.364	7	18	.280	Morgan State	6	10	.375	7	22	.241
							Maryland E. Shore	2	10	.167	3	24	.111	MD E.Shore	3	13	.188	5	23	.179
							Morgan State	1	11	.083	3	25	.107	Bethune-Cookman	3	13	.188	5	24	.172
							<b>1985-86</b>							<b>1991-92</b>						
							N.C. A&T State	12	2	.857	20	7	.741	Howard	12	4	.750	14	13	.519
							Howard	11	3	.786	18	9	.667	N.C. A&T State	11	4	.750	18	8	.692
							Delaware State	7	7	.500	11	16	.407	Florida A&M	11	5	.688	14	13	.519
							Coppin State	7	7	.500	10	17	.371	Coppin State	9	7	.563	15	12	.556
							Morgan State	7	7	.500	7	20	.259	S.C. State	9	7	.563	13	14	.481
							S.C. State	5	9	.357	10	17	.370	Delaware State	9	7	.563	13	14	.481
							Bethune-Cookman	4	10	.286	6	21	.222	Morgan State	5	11	.313	5	22	.185
							Maryland E. Shore	3	11	.214	4	23	.148	Bethune-Cookman	3	13	.188	3	24	.111
														Maryland E. Shore	2	14	.125	3	24	.111

# Year-by-Year Conference Standings

## Men's Basketball



	CONFERENCE			OVERALL				CONFERENCE			OVERALL				CONFERENCE			OVERALL								
	W	L	PCT.	W	L	PCT.		W	L	PCT.	W	L	PCT.		W	L	PCT.	W	L	PCT.						
<b>1992-93</b>													<b>2003-04</b>													
Coppin State	16	0	1.000	22	8	.733	S.C. State	14	4	.778	17	12	.586	S.C. State	14	4	.778	18	11	.691						
N.C. A&T State	9	7	.563	14	13	.519	Coppin State	14	4	.778	15	14	.517	Coppin State	14	4	.778	18	14	.562						
S.C. State	9	7	.563	16	13	.552	Morgan State	12	6	.667	14	14	.500	Delaware State	11	7	.611	13	15	.464						
Morgan State	9	7	.563	9	17	.346	*Norfolk State	11	7	.579	15	12	.556	Hampton	11	7	.611	13	17	.433						
Florida A&M	8	8	.500	10	18	.357	Bethune-Cookman	10	9	.473	11	16	.407	Florida A&M	10	8	.556	15	17	.469						
Maryland E. Shore	7	9	.438	12	15	.444	N.C. A&T State	9	9	.500	13	15	.464	Norfolk State	10	8	.556	12	17	.414						
Delaware State	6	10	.375	13	16	.448	Florida A&M	8	11	.421	12	19	.387	Morgan State	9	9	.500	11	16	.407						
Howard	6	10	.375	10	18	.357	Hampton Univ.	8	10	.444	8	19	.296	Bethune-Cookman	7	11	.389	8	21	.276						
Bethune-Cookman	2	14	.125	3	24	.111	Maryland E. Shore	7	11	.368	10	17	.370	Maryland E. Shore	6	12	.333	8	21	.276						
							Delaware State	5	13	.278	8	19	.421	Howard	4	14	.222	6	22	.214						
							Howard	2	16	.111	2	25	.074	N.C. A&T State	3	15	.167	3	25	.107						
<b>1993-94</b>																										
Coppin State	16	0	1.000	22	7	.759	*not eligible for '99 Tournament																			
Maryland E. Shore	10	6	.625	15	11	.577																				
N.C. A&T State	10	6	.625	13	13	.500																				
S.C. State	10	6	.625	14	12	.538																				
Bethune-Cookman	8	8	.500	9	17	.346																				
Howard	7	9	.438	10	16	.385																				
Delaware State	5	11	.313	8	18	.308																				
Morgan State	4	12	.250	6	20	.231																				
Florida A&M	2	14	.125	4	22	.154																				
<b>1994-95</b>																										
Coppin State	15	1	.938	21	10	.677																				
S.C. State	11	5	.688	15	13	.536																				
N.C. A&T State	10	6	.625	15	15	.500																				
Bethune-Cookman	9	7	.563	12	16	.429																				
Maryland E. Shore	9	7	.563	13	14	.481																				
Howard	8	8	.500	9	18	.333																				
Morgan State	5	11	.313	5	22	.185																				
Delaware State	3	13	.188	7	21	.250																				
Florida A&M	2	14	.125	5	22	.185																				
<b>1995-96</b>																										
S.C. State	14	2	.875	22	8	.733																				
Coppin State	14	2	.875	19	10	.655																				
Delaware State	8	8	.500	11	17	.393																				
Bethune-Cookman	8	8	.500	12	15	.444																				
N.C. A&T State	7	9	.438	10	17	.370																				
Maryland E. Shore	6	10	.375	11	16	.407																				
Howard	6	10	.375	7	20	.259																				
Morgan State	6	10	.375	7	20	.259																				
Florida A&M	3	13	.188	8	19	.296																				
Hampton				9	17	.346																				
<b>1996-97</b>																										
Coppin State	15	3	.833	22	9	.710																				
S.C. State	12	6	.667	14	14	.500																				
N.C. A&T State	11	7	.611	15	13	.536																				
Bethune-Cookman	9	9	.500	12	16	.429																				
Florida A&M	8	10	.444	8	19	.296																				
Morgan State	8	10	.444	9	18	.333																				
Delaware State	7	11	.389	7	20	.259																				
Hampton	7	11	.389	8	19	.296																				
Howard	7	11	.389	7	20	.259																				
Maryland E. Shore	6	12	.333	11	17	.393																				
<b>1997-98</b>																										
Coppin State	17	1	.944	21	8	.724																				
S.C. State	16	2	.889	22	8	.733																				
Morgan State	11	7	.611	12	16	.429																				
Hampton	11	7	.611	14	12	.538																				
Florida A&M	8	10	.444	11	17	.393																				
Delaware State	7	11	.389	9	18	.333																				
Maryland E. Shore	7	11	.389	9	18	.333																				
N.C. A&T State	7	11	.389	8	19	.296																				
Howard Univ.	5	13	.278	8	20	.286																				
Bethune-Cookman	1	17	.056	1	26	.037																				
*Norfolk State				6	20	.231																				
<b>1998-99</b>																										
S.C. State	14	4	.778	17	12	.586																				
Coppin State	14	4	.778	15	14	.517																				
Morgan State	12	6	.667	14	14	.500																				
*Norfolk State	11	7	.579	15	12	.556																				
Bethune-Cookman	10	9	.473	11	16	.407																				
N.C. A&T State	9	9	.500	13	15	.464																				
Florida A&M	8	11	.421	12	19	.387																				
Hampton Univ.	8	10	.444	8	19	.296																				
Maryland E. Shore	7	11	.368	10	17	.370																				
Delaware State	5	13	.278	8	19	.421																				
Howard	2	16	.111	2	25	.074																				
<b>1999-00</b>																										
S.C. State	14	5	.737	20	14	.588																				
Hampton	13	5	.722	17	12	.586																				



# MEAC Tournament Honors

All-Time

## **TOURNAMENT OUTSTANDING PERFORMERS**

1972.....	Robert Lewis, HOW
1973.....	William Harris, NCAT
1974.....	Talvin Skinner, UMES
1975.....	Marvin Webster, MSU
1976.....	James Sparrow, NCAT
1977.....	Eric Evans, MSU
1978.....	James Sparrow, NCAT
1979.....	Larry Spriggs, HOW
1980.....	Larry Spriggs, HOW
1981.....	Larry Spriggs, HOW
1982.....	Eric Boyd, NC A&T
1983.....	Joe Binion, NC A&T
1984.....	Eric Boyd, NC A&T
1985.....	Eric Boyd, NC A&T
1986.....	Thomas Griffis, NC A&T
1987.....	Thomas Griffis, NC A&T
1988.....	Claude Williams, NC A&T
1989.....	Travis Williams, SCSU
1990.....	Reggie Isaac, CSU
1991.....	Kenneth Davis, FAMU
1992.....	Howard Holley, HOW
1993.....	Stephen Stewart, CSU
1994.....	Phillip Alien, NC A&T
1995.....	Phillip Alien, NC A&T
1996.....	Derrick Patterson, SCSU
1997.....	Terquin Mote, CSU
1998.....	Roderick Blakney, SCSU
1999.....	Monroe Pippins, FAMU
2000.....	Mike Waitre, SCSU
2001.....	Tarvis Williams, HAM
2002.....	Tommy Adams, HAM
2003.....	Dustin Braddick, SCSU
2004.....	Terrence Woods, FAMU
2005.....	Jahsha Bluntt, DSU
2006.....	Rashad West, HAM
2007.....	Brian Greene, FAMU
2008.....	Tywain McKee, CSU

## **TOURNAMENT OUTSTANDING COACHES**

1972.....	Cal Irvin, NC A&T
1973.....	Warren Reynolds, NC A&T
1974.....	John Bares, UMES
1975.....	Warren Reynolds, NC A&T
1976.....	Warren Reynolds, NC A&T
1977.....	Nat Frazier, Morgan State
1978.....	Eugene Little, NC A&T
1979.....	Eugene Little, NC A&T
1980.....	James Ciles, FAMU
1981.....	Jack Cy McClairen, B-CC
1982.....	Jack Cy McClairen, B-CC
1983.....	Don Corbett, NC A&T
1984.....	Don Corbett, NC A&T
1985.....	Don Corbett, NC A&T
1986.....	Don Corbett, NC A&T
1987.....	Don Corbett, NC A&T
1988.....	Don Corbett, NC A&T
1989.....	Cy Alexander, SCSU
1990.....	Ron "Fang" Mitchell, CSU
1991.....	Willie Booker, FAMU
1992.....	Alfred "Butch" Beard, HOW
1993.....	Ron "Fang" Mitchell, CSU
1994.....	Jeff Capel, NC A&T
1995.....	Roy Thomas NC A&T
1996.....	Cy Alexander, SCSU
1997.....	Ron Fang Mirchell, CSU
1998.....	Cy Alexander, SCSU
1999.....	Mickey Clayton, FAMU
2000.....	Cy Alexander, SCSU
2001.....	Steve Merfeld, HAM
2002.....	Steve Merfeld, HAM
2003.....	Cy Alexander, SCSU
2004.....	Mike Gillespie, FAMU
2005.....	Greg Jackson, DSU
2006.....	Bobby Collins, HAM
2007.....	Mike Gillespie, FAMU
2008.....	Ron "Fang" Mitchell, CSU



# All MEAC Team Selections

(1972-2008)



## 1971-1972 FRONT COURT

Allen Reddish .....NCCU  
 Elmer Alston .....N.C. A&T  
 Jackie Bryant .....UMES  
 Marvin Spratley .....Delaware St.  
 Tommy Boswell .....S.C. State  
 Marvin Webster .....Morgan St.

### BACKCOURT

James Outlaw .....N.C. A&T  
 William Harris .....N.C. A&T  
 Johnny Thornton .....S.C. State  
 Chester Davis .....Morgan St.  
 Sam Shepherd .....Delaware St.

## 1972-1973 FRONT COURT

Robert Lewis .....Howard  
 Marvin Webster .....Morgan St.  
 Talvin Skinner .....UMES  
 Tommy Boswel .....S.C. State  
 James Roundtree .....Delaware St.

### BACKCOURT

Rubin Collins .....UMES  
 Chester Davis .....Morgan St.  
 Warren Hollins .....Howard  
 William Harris .....N.C. A&T  
 Arnie Young .....Howard

## 1973-1974 FRONT COURT

Marvin Webster .....Morgan St.  
 Talvin Skinner .....UMES  
 Joe Pace .....UMES  
 Robert Little .....NCCU  
 Alex Barron .....S.C. State  
 Achilles Caroll .....Howard

### BACKCOURT

Rubin Collins .....UMES  
 James Outlaw .....N.C. A&T  
 Mike Williams .....S.C. State  
 Sam Shepherd .....Delaware St.

## 1974-1975 FRONT COURT

Marvin Webster .....Morgan St.  
 Robert Little .....NCCU  
 Fred Simmons .....Delaware St.  
 Alex Barron .....S.C. State  
 Vadnay Cotton .....Howard  
 James Roundtree .....Delaware St.

### BACKCOURT

Harry Nickens .....S.C. State  
 Billy Newton .....Morgan St.  
 Sam Shepherd .....Delaware St.  
 Allen Spruill .....N.C. A&T

## 1975-1976 FRONT COURT

Eric Evans .....Morgan St.  
 Vadnay Cotton .....Howard  
 Sinclair Colbert .....N.C. A&T  
 James Rogers .....Delaware St.  
 Ron Johnson .....N.C. A&T  
 Carl Green .....S.C. State

## BACKCOURT

Billy Newton .....Morgan St.  
 James Sparrow .....N.C. A&T  
 Harry Nickens .....S.C. State  
 John Harrell .....NCCU

## 1976-1977 FRONT COURT

Eric Evans .....Morgan St.  
 Gerald Glover .....Howard  
 Floyd Monroe .....NCCU  
 Harry Nickens .....S.C. State  
 Ken Simmons .....Maryland E. Shore

### SECOND TEAM

L.J. Pipkin .....N.C. A&T  
 Robert McClellan .....NCCU  
 Anthony Young .....Morgan St.  
 Willie Brown .....S.C. State  
 Maurice Jennings .....Morgan St.

## 1977-1978 FRONT COURT

Eric Evans .....Morgan St.  
 Gerald Glover .....Howard  
 Kenny Simmons .....Maryland E. Shore  
 Harry Nickens .....S.C. State  
 James Sparrow .....N.C. A&T

### SECOND TEAM

Dorian Dent .....Howard  
 L.J. Pipkin .....N.C. A&T  
 Arthur Snipe .....S.C. State  
 Harold Royster .....N.C. A&T  
 Anthony Young .....Morgan St.

## 1978-1979 FRONT COURT

Dorian Dent .....Howard  
 Anthony Young .....Morgan St.  
 Garcia Hopkins .....Morgan St.  
 Joe Brawner .....N.C. A&T  
 Charles Shealey .....Delaware St.  
 James Sparrow .....N.C. A&T

### SECOND TEAM

Byron Witherspoon .....Morgan St.  
 Charles Maybin .....Delaware St.  
 Arthur Snipe .....S.C. State  
 William Hill .....Delaware St.  
 Kenny Simmons .....Maryland E. Shore

## 1979-1980 FRONT COURT

Robert Hunter .....Delaware St.  
 James Ratliff .....Howard  
 William Hill .....Delaware St.  
 Charles Shealey .....Delaware St.  
 Marty Lane .....S.C. State  
 Joe Brawner .....N.C. A&T

### SECOND TEAM

Rodney Wright .....Howard  
 Larry Spriggs .....Howard  
 Harold Royster .....N.C. A&T  
 Gregory Wilson .....S.C. State  
 Steve Hay .....Maryland E. Shore

## 1980-1981 FIRST TEAM

Larry Spriggs .....Howard  
 Walter Taylor .....FAMU  
 James Ratliff .....Howard  
 James Anderson .....N.C. A&T  
 Darrell Spence .....FAMU

### SECOND TEAM

Joe Binion .....N.C. A&T  
 Joe Robinson .....S.C. State  
 Harold Royster .....N.C. A&T  
 Jeff Gumbs .....Delaware St.  
 Ellis James .....B-CU

## 1981-1982 FIRST TEAM

Joe Binion .....N.C. A&T  
 James Ratliff .....Howard  
 Gregory Wilson .....S.C. State  
 James Anderson .....N.C. A&T  
 Darrell Spence .....FAMU

### SECOND TEAM

Michael Toomer .....FAMU  
 William Hill .....Delaware St.  
 Jarvis Smith .....B-CU  
 Joe Robinson .....S.C. State  
 Rodney Wright .....Howard

## 1982-1983 FIRST TEAM

Joe Binion .....N.C. A&T  
 Franklin Giles .....S.C. State  
 Jarvis Smith .....B-CU  
 Bernard Perry .....Howard  
 Marvin Haynes .....S.C. State

### SECOND TEAM

Edward Wallace .....Delaware St.  
 Juan Lanauze .....N.C. A&T  
 Larry Broner .....FAMU  
 Eric Boyd .....N.C. A&T  
 Danny Sapp .....Delaware St.  
 Michael Toomer .....FAMU

## 1983-1984 FIRST TEAM

Joe Binion .....N.C. A&T  
 Michael Toomer .....FAMU  
 Bernard Campbell .....Delaware St.  
 Eric Boyd .....N.C. A&T  
 Jimmy Brown .....N.C. A&T

### SECOND TEAM

Kevin Scott .....Howard  
 David Wynn .....Howard  
 Dominic Snowden .....Delaware St.  
 Ralph Miller .....S.C. State  
 Donnell Booney .....Maryland E. Shore  
 Franklin Giles .....S.C. State

## 1984-1985 FIRST TEAM

Bernard Campbell .....Delaware St.  
 Dominic Snowden .....Delaware St.  
 Sylvester Parson .....S.C. State  
 Eric Boyd .....N.C. A&T  
 Jimmy Brown .....N.C. A&T

## SECOND TEAM

Claude Williams .....N.C. A&T  
 Robert McIlwaine .....Howard  
 Donald Hill .....B-CU  
 Dennis Williams .....S.C. State  
 Donnell Booney .....Maryland E. Shore  
 Fred Hill .....Howard

## 1985-1986 FIRST TEAM

Don Hill .....B-CU  
 MacAuthor Joyner .....S.C. State  
 Claude Williams .....N.C. A&T  
 Robert McIlwaine .....Howard  
 George Cale .....N.C. A&T  
 Donnell Booney .....Maryland E. Shore

### SECOND TEAM

Earl Lee .....Coppin St.  
 Terrance Ball .....Delaware St.  
 Derek Robinson .....Maryland E. Shore  
 Thomas Griffis .....N.C. A&T  
 Fred Hill .....Howard

## 1986-1987 FIRST TEAM

Claude Williams .....N.C. A&T  
 Howard Spencer .....Howard  
 Earl Lee .....Coppin St.  
 George Cale .....N.C. A&T  
 Steve Miller .....Coppin St.  
 Thomas Griffis .....N.C. A&T

### SECOND TEAM

Derek Tovinson .....Maryland E. Shore  
 MacAuthor Joyner .....S.C. State  
 Noel Liverpool .....Morgan St.  
 Marvin Blye .....Maryland E. Shore  
 William Stuart .....Howard

## 1987-1988 FIRST TEAM

Claude Williams .....N.C. A&T  
 Rodney Mack .....S.C. State  
 Phil Booth .....Coppin St.  
 Thomas Griffis .....N.C. A&T  
 Aldwin Ware .....FAMU

### SECOND TEAM

Reggie Henry .....FAMU  
 John Spencer .....Howard  
 Marvin Blye .....Maryland E. Shore  
 George Hamilton .....Howard  
 Bernard Bowman .....S.C. State

## 1988-1989 FIRST TEAM

Eric Jeter .....S.C. State  
 Glenn Taggart .....N.C. A&T  
 Tom Davis .....Delaware St.  
 Leonard King .....FAMU  
 Rodney Mack .....S.C. State

### SECOND TEAM

Terry Giles .....FAMU  
 Reggie Isaac .....Coppin St.  
 Carlton Becton .....N.C. A&T  
 Anthony Reid .....Morgan St.  
 Larry Stewart .....Coppin St.





# All MEAC Team Selections

(1972-2008)

## 1989-1990 FIRST TEAM

Terry Giles .....FAMU  
Reggie Isaac .....Coppin St.  
Tom Davis .....Delaware St.  
Travis Williams .....S.C. State  
Larry Stewart .....Coppin St.

## SECOND TEAM

Larry Yarbray .....Coppin St.  
James McCoy .....Morgan St.  
Phil Booth .....Coppin St.  
Kevin Glover .....FAMU  
Tyrone Powell .....Howard

## 1990-1991 FIRST TEAM

Reggie Isaac .....Coppin St.  
Emanuel Davis .....Delaware St.  
Travis Williams .....S.C. State  
Tom Davis .....Delaware St.  
Larry Stewart .....Coppin St.

## SECOND TEAM

Glenn Taggart .....N.C. A&T  
Clifford Reed .....B-CU  
Dana Elliott .....N.C. A&T  
Delon Turner .....FAMU  
Glenn Smith .....Morgan St.  
Larry McCollum .....Coppin St.

## 1991-1992 FIRST TEAM

Delon Turner .....FAMU  
Jackie Robinson .....S.C. State  
Jamaine Williams .....N.C. A&T  
Reggie Cunningham .....B-CU  
Reginal Finney .....FAMU

## SECOND TEAM

Dana Elliott .....N.C. A&T  
Julius McNeil .....Howard  
Tariq Saunders .....Coppin St.  
Tyrone Boger .....Delaware St.  
James Mazyck .....Coppin St.

## 1992-1993 FIRST TEAM

Jackie Robinson .....S.C. State  
Jamaine Williams .....N.C. A&T  
Delon Turner .....FAMU  
Marlin Kimbrow .....Maryland E. Shore  
Milan Brown .....Howard

## SECOND TEAM

James Malik White .....Morgan St.  
Tariq Saunders .....Coppin St.  
D'Andre Parmley .....Delaware St.  
Vince Langston .....Morgan St.  
Bernard Toatley .....S.C. State

## 1993-1994 FIRST TEAM

Stephen Stewart .....Coppin St.  
Joey McGear .....FAMU  
Gerald Jordan .....Morgan St.  
Keith Carmichael .....Coppin St.  
Sidney Goodman .....Coppin St.

## SECOND TEAM

Joe Bunn .....N.C. A&T  
Art Crowder .....Howard  
Zack Allison .....Maryland E. Shore  
Dale Harrison .....Maryland E. Shore  
Deon Murray .....S.C. State

## 1994-1995 FIRST TEAM

Stephen Stewart .....Coppin St.  
Derrick Patterson .....S.C. State  
John Floyd .....N.C. A&T  
Sidney Goodman .....Coppin St.  
Latroy Strong .....B-CU

## SECOND TEAM

Art Crowder .....Howard  
Chris Nurse .....Delaware St.  
Lamont Parrish .....B-CU  
Keith Carmichael .....Coppin St.  
Ricky Davis .....FAMU

## 1995-1996 FIRST TEAM

Terquin Mott .....Coppin St.  
Derrick Patterson .....S.C. State  
Reggie Welch .....Coppin St.  
JaFonde Williams .....Hampton  
Aaron McKinney .....Maryland E. Shore

## SECOND TEAM

Tyrone White .....B-CU  
Chris Nurse .....Delaware St.  
John Woods .....Maryland E. Shore  
Allen Watson .....Coppin St.  
Eric Fernandez .....S.C. State

## 1996-1997 FIRST TEAM

Terquin Mott .....Coppin St.  
Kimani Stewart .....N.C. A&T  
Jerome James .....FAMU  
Roderick Blakney .....S.C. State  
Antoine Brockington .....Coppin St.

## SECOND TEAM

Reggie Welch .....Coppin St.  
Xavier Singletary .....Howard  
Chris Watson .....Morgan St.  
Jonathan Richmond .....N.C. A&T  
Cryhten Langhorne .....Maryland E. Shore

## 1997-1998 FIRST TEAM

Antoine Brockington .....Coppin St.  
Roderick Blakney .....S.C. State  
Jerome James .....FAMU  
Xavier Singletary .....Howard  
Rasheed Sparks .....Morgan State

## SECOND TEAM

Kareem Lewis .....Coppin St.  
Raheem Waller .....S.C. State  
Tarvis Williams .....Hampton  
Danny Singletary .....Coppin St.  
Cryhten Langhorne .....Maryland E. Shore

## 1998-1999

Damian Woolfolk .....Norfolk St.  
Fred Warrick .....Coppin St.  
Tarvis Williams .....Hampton  
Curtis King .....Morgan St.  
Johnny McClenton .....B-CU

## 1999-2000

Damian Woolfolk .....Norfolk State  
Freddie Cole .....B-CU  
Darryl Neal .....Norfolk State  
Travis Williams .....Hampton  
Dexter Hall .....S.C. State

## 2000-2001 FIRST TEAM

Tarvis Williams .....Hampton  
Bruce Jenkins .....N.C. A&T  
Dexter Hall .....S.C. State  
Joe Brown .....Coppin St.  
Vincent Whitt .....S.C. State

## SECOND TEAM

Andre Matthews .....Delaware St.  
Curtis King .....Morgan St.  
LaSean Howard .....Hampton  
Marseilles Brown .....Hampton  
James Miller .....N.C. A&T

## 2001-2002 FIRST TEAM

Tommy Adams .....Hampton  
Kyle Williams .....Howard  
Bruce Jenkins .....N.C. A&T  
Richard Toussaint .....B-CU  
Andre Matthews .....Delaware St.

## SECOND TEAM

Miles Davis .....Delaware St.  
Andre Riviera .....S.C. State  
Dexter Hall .....S.C. State  
Aki Thomas .....Howard  
Isaac Jefferson .....Hampton

## 2002-2003 FIRST TEAM

Jermaine Hill .....FAMU  
Barry Hairston .....Hampton  
Thurman Zimmerman .....S.C. State  
Terrence Woods .....FAMU  
Ron Williamson .....Howard

## SECOND TEAM

Kyle Williams .....Howard  
Andre Matthews .....Delaware St.  
Tee Trotter .....Maryland E. Shore  
Moses Malone Jr. ....S.C. State  
\*Aaron Matthews .....Delaware St.  
\*Richard Toussaint .....B-CU  
(\*Denotes a tie)

## 2003-2004 FIRST TEAM

Thurman Zimmerman .....S.C. State  
Jimmy Boykin .....Coppin State  
Devin Green .....Hampton  
Terrence Woods .....Florida A&M  
Chakowby Hicks .....Norfolk State

## SECOND TEAM

Tee Trotter .....Maryland E. Shore  
Jeff Granger .....Hampton  
Brian Mason .....S.C. State  
Terrence Hunter .....Delaware State  
James Wilkerson .....Howard

## 2004-2005 FIRST TEAM

Thurman Zimmerman .....S.C. State  
Bruce Brown .....Hampton  
Devin Green .....Hampton  
Nicholas King .....Coppin State  
Chakowby Hicks .....Norfolk State

## SECOND TEAM

Jahsha Bluntt .....Delaware State  
Raheem Scott .....Coppin State  
Tony Tate .....Florida A&M  
Antonio Webb .....B-CU  
Sam Brand .....Morgan State

## 2005-2006 FIRST TEAM

Antonio Webb .....B-CU  
Tony Tate .....Florida A&M  
Brian Mason .....South Carolina State  
Jahsha Bluntt .....Delaware State  
Michael Williams II .....B-CU

## SECOND TEAM

Jaz Cowen .....Hampton  
Darryl Proctor .....Coppin State  
Tim Parham .....Maryland E. Shore  
Tywain McKee .....Coppin State  
Tony Murphy .....Norfolk State

## 2006-2007 FIRST TEAM

Jahsha Bluntt .....Delaware St.  
Rome Sanders .....FAMU  
Steven Rush .....N.C. A&T  
Rashad West .....Hampton  
Tywain McKee .....Coppin State

## SECOND TEAM

Roy Bright .....Delaware St.  
Ron Timus .....Morgan State  
Darrin Shine .....Delaware St.  
Tony Murphy .....Norfolk St.  
Jason Wills .....N.C. A&T

## 2007-2008 FIRST TEAM

Roy Bright .....Delaware St.  
Boubacar Coly .....Morgan St.  
Tony Murphy .....Norfolk St.  
Tywain McKee .....Coppin St.  
Jamar Smith .....Morgan St.

## SECOND TEAM

Jason Johnson .....S.C. State  
Marquise Kately .....Morgan St.  
Steven Rush .....N.C. A&T  
Ed Tyson .....Maryland E. Shore  
Rashad West .....Hampton



# All-Time Coaching Alumni

## Men's Basketball



### BETHUNE-COOKMAN

Coach	Yrs.	Record	Pct.	MEAC Tournament	Post Season
Jack "Cy" McClairen	1980-1993	93-352	.270	7-13	0-0
Tony Sheals	1993-1997	43-61	.413	2-4	0-0
Horace Broadnax	1997-2001	40-90	.307	2-4	0-0
*Cliff Reed	2001-	70-122	.365	3-7	0-0

### COPPIN STATE

Coach	Yrs.	Record	Pct.	MEAC Tournament	Post Season
John Bates	1985-1986	10-17	.371	0-0	0-0
*Ron "Fang" Mitchell	1986-	259-105	.712	28-14	2-6

### DELAWARE STATE

Coach	Yrs.	Record	Pct.	MEAC Tournament	Post Season
Ira Mitchell	1971-1976	58-70	.475	1-6	0-0
Marshall Emery	1976-1979	30-50	.382	1-3	0-0
Ajac Triplett	1979-1983	44-79	.431	0-4	0-0
Joe Davidson	1983-1985	24-33	.418	2-2	0-0
Marshall Emery	1985-1988	18-66	.222	0-3	0-0
Jeff Jones	1988-1994	78-92	.463	4-6	0-0
Fred Goodman	1994-1996	18-38	.308	2-2	0-0
Art Perry	1996-1997	7-20	.259	0-1	0-0
Jim DuBose	1997-1999	17-37	.320	0-2	0-0
Tony Sheals	1999-2000	5-20	.200	0-0	0-0
Stephen Wilson	1999-2000	1-2	.333	0-1	0-0
*Greg Jackson	2001-	105-39	.541	9-5	0-2

### FLORIDA A&M

Coach	Yrs.	Record	Pct.	MEAC Tournament	Post Season
James Giles	1979-1983	37-67	.356	4-4	0-0
Tony Fields	1983-1984	7-19	.369	0-0	0-0
Willie Booker	1986-1993	104-84	.533	11-7	0-1
Ron Brown	1993-1996	15-55	.214	0-2	0-0
Mickey Clayton	1996-2001	48-95	.335	2-7	0-1
Mike Gillespie	2002-2007	76-77	.496	8-3	1-2
*Eugene Harris	2007-	15-17	.469	1-1	0-0

### HAMPTON

Coach	Yrs.	Record	Pct.	MEAC Tournament	Post Season
Byron Samuels	1995-1997	17-36	.321	0-0	0-0
Steve Merfeld	1997-2002	90-57	.612	7-2	1-2
Bobby Collins	2003-2006	49-41	.544	5-3	0-0
*Kevin Nickelberry	2006-	33-28	.541	0-2	0-0

### HOWARD

Coach	Yrs.	Record	Pct.	MEAC Tournament	Post Season
Marshall Emery	1971-1975	55-39	.585	8-5	0-0
A.B. Williamson	1975-1990	222-166	.572	19-13	0-1
Alfred Beard	1990-1994	41-65	.387	4-3	0-1
Mike McLeese	1994-1998	23-55	.295	0-3	0-0
Kirk Saulny	1998-2000	3-52	.054	0-2	0-0
Frankie Allen	2000-2005	47-63	.427	2-3	0-0
*Gilbert Jackson	2006-	20-70	.222	0-2	0-0

### MARYLAND EASTERN SHORE

Coach	Yrs.	Record	Pct.	MEAC Tournament	Post Season
John Bates	1971-1974	61-9	.871	4-3	8-2
Dan Jones	1974-1977	12-67	.152	0-3	0-0
Kirkland Hall	77-80/82-84	50-95	.345	1-5	0-0
Howie Evans	1984-1986	7-47	.130	1-2	0-0

Steve Williams	1986-1990	20-87	.187	0-2	0-0
Robert Hopkins	1990-1992	5-28	.152	0-1	0-0
Bobby Wilkerson	1992	3-18	.143	0-1	0-0
Rob Chavez	1992-1994	27-25	.519	1-2	0-0
Jeff Menday	1994-1996	24-28	.462	0-2	0-0
Lonnie Williams	1996-2000	44-67	.396	3-4	0-0
Thomas Trotter	2000-2004	34-69	.330	1-3	0-0
Lawrence Lessett	2005-2007	2-28	.067	0-2	0-0
Meredith Smith	2007-2008	4-28	.125	0-1	0-0
*Frankie Allen	2008-	0-0	.000	0-0	0-0

### MORGAN STATE

Coach	Yrs.	Record	Pct.	MEAC Tournament	Post Season
Nathaniel Frazier	1971-1976	91-32	.740	8-6	6-1
Aaron Johnson	1976-1978	27-21	.563	6-2	0-0
Gus Guydon	1978-1980	24-24	.500	1-2	0-0
Tom Dean	1984-1985	0-5	.000	0-0	0-0
Ray McMillian	1984-1985	3-20	.130	0-0	0-0
Nathaniel Frazier	1985-1990	48-77	.384	1-2	0-0
Nat Taylor	1990	2-8	.200	0-1	0-0
Michael Holmes	1990-1994	26-79	.248	4-4	0-0
Lynn Ramage	1994-1995	5-21	.192	0-1	0-0
Chris Fuller	1995-2001	53-115	.315	2-6	0-0
Alfred Beard	2002-2006	38-79	.325	3-4	0-0
*Todd Bozeman	2006-	24-10	.706	3-2	0-1

### NORFOLK STATE

Coach	Yrs.	Record	Pct.	MEAC Tournament	Post Season
Michael Bernard	1997-1999	21-32	.396	0-0	0-0
Wil Jones	1999-2002	34-51	.400	1-3	0-0
Dwight Freeman	2003-2007	50-65	.435	3-4	0-0
*Anthony Evans	2007-	16-15	.516	1-1	0-0

### NORTH CAROLINA A&T

Coach	Yrs.	Record	Pct.	MEAC Tournament	Post Season
Cal Irvin	1971-1972	17-6	.739	2-0	0-0
Warren Reynolds	1972-1977	64-54	.542	9-3	0-1
Gene Littles	1977-1979	36-15	.706	4-0	0-0
Don Corbett	1979-1993	238-130	.647	19-7	0-8
Jeff Capel	1993-1994	13-13	.500	3-0	0-1
Roy Thomas	1994-1999	61-79	.435	7-5	0-0
Curtis Hunter	1999-2003	39-75	.342	3-4	0-0
*Jerry Eaves	2004-	31-55	.360	1-4	0-0

### SOUTH CAROLINA STATE

Coach	Yrs.	Record	Pct.	MEAC Tournament	Post Season
Ben Jobe	1971-1973	29-22	.569	0-2	0-0
Tim Autry	1973-1980	92-86	.517	3-7	0-0
Johnny Jones	1980-1983	33-43	.434	1-3	0-0
Percy Caldwell	1983-1987	47-62	.431	2-4	0-0
Cy Alexander	1987-2003	263-192	.578	27-10	0-5
Benjamin Betts	2004-2006	37-23	.617	2-2	0-0
Jamal Brown	2006-2007	13-17	.433	0-0	0-0
*Tim Carter	2007-	13-20	.394	1-1	0-0

### WINSTON-SALEM STATE

Coach	Yrs.	Record	Pct.	MEAC Tournament	Post Season
*Bobby Collins	2005-	17-42	0-0	0-0	0-0

\*Current Head Coach







# All-Time Tournament Results

## Men's Basketball

### MEN'S ALL-TIME TOURNAMENT RESULTS

#### ■ 1<sup>st</sup> DURHAM, N.C. — 1972

UMES 80, SC State 77  
Morgan 51, NC Central 46  
Howard 67, Delaware State 57  
NC A&T 86, UMES 67  
Howard 67, Morgan State 66  
UMES 83, Morgan State 71  
NC A&T 71, Howard 62

#### ■ 2<sup>nd</sup> DURHAM, N.C. — 1973

Morgan State 79, SC State 58  
Howard 79, NC Central 66  
NC A&T 91, Delaware State 74  
Howard 75, Morgan State 71  
NC A&T 81, UMES 80  
Morgan State 98, UMES 87  
NC A&T 86, Howard 81

#### ■ 3<sup>rd</sup> BALTIMORE, MD. — 1974

NC A&T 72, NC Central 71  
Howard 91, Delaware State 88  
Morgan State 81, SC State 71  
UMES 92, Howard 89  
Morgan State 65, NC A&T 63  
Howard 96, NC A&T 93 (3 ot)  
UMES 77, Morgan State 62

#### ■ 4<sup>th</sup> BALTIMORE, MD — 1975

Delaware State 77, NC Central 57  
Howard 92, SC State 87  
Morgan State 121, UMES 68  
Morgan State 78, Delaware State 72  
NC A&T 78, Howard 74  
Howard 89, Delaware State 78  
NC A&T 83, Morgan State 77

#### ■ 5<sup>th</sup> GREENSBORO, N.C. — 1976

Howard 68, Delaware State 57  
NC Central 82, SC State 81 (OT)  
NC A&T 96, UMES 70  
Morgan State 80, Howard 77  
NC A&T 75, NC Central 68  
NC Central 92, Howard 86  
NC A&T 83, Morgan State 77

#### ■ 6<sup>th</sup> GREENSBORO, N.C. — 1977

Morgan State 78, UMES 73  
Howard 91, NC A&T 79  
NC Central 66, Delaware State 65  
Howard 84, NC Central 70  
Morgan State 77, SC State 76  
Morgan State 82, Howard 77

#### ■ 7<sup>th</sup> GREENSBORO, N.C. — 1978

SC State 64, Delaware State 50  
Howard 97, UMES 69  
Morgan State 79, NC Central 69  
Morgan State 76, Howard 74  
NC A&T 64, SC State 61  
NC A&T 66, Morgan State 63

#### ■ 8<sup>th</sup> GREENSBORO, N.C. — 1979

Morgan State 73, UMES 70  
Delaware State 78, SC State 73  
Howard 73, NC Central 64  
Howard 61, Delaware State 51  
NC A&T 77, Morgan State 62  
NC A&T 48, Howard 46

#### ■ 9<sup>th</sup> WINSTON-SALEM, N.C. — 1980

SC State 71, Morgan State 59  
NC Central 80, NC A&T 79 (OT)  
Florida A&M 69, Delaware State 67  
SC State 94, Florida A&M 90 (OT)  
Howard 98, NC Central 82  
Howard 75, SC State 69

#### ■ 10<sup>th</sup> WINSTON-SALEM, N.C. — 1981

Howard 67, Delaware State 53  
Bethune-Cookman 72, SC State 60  
Howard 75, Florida A&M 73  
NC A&T 54, Bethune-Cookman 51  
Florida A&M 75, Bethune-Cookman 72  
Howard 66, NC A&T 63

#### ■ 11<sup>th</sup> WINSTON-SALEM, N.C. — 1982

Howard 63, UMES 57  
Bethune-Cookman 54, SC State 53  
Florida A&M 47, Delaware State 42  
Howard 50, Bethune-Cookman 49  
NC A&T 47, Florida A&M 45  
NC A&T 79, Howard 67

#### ■ 12<sup>th</sup> GREENSBORO, N.C. — 1983

SC State 65, Delaware State 58  
NC A&T 80, Bethune-Cookman 73  
UMES 73, Florida A&M 71  
Howard 67, SC State 57  
NC A&T 81, UMES 74  
NC A&T 71, Howard 64

#### ■ 13<sup>th</sup> GREENSBORO, N.C. — 1984

SC State 71, Bethune-Cookman 65 (OT)  
Delaware State 67, UMES 52  
NC A&T 70, Delaware State 62  
Howard 73, SC State 59  
NC A&T 65, Howard 58

#### ■ 14<sup>th</sup> PHILADELPHIA, PA — 1985

Delaware State 68, UMES 62  
Bethune-Cookman 54, SC State 53  
NC A&T 97, Bethune-Cookman 75  
Howard 73, Delaware State 59  
NC A&T 71, Howard 69

#### ■ 15<sup>th</sup> PHILADELPHIA, PA. — 1986

Bethune-Cookman 92, SC State 85  
UMES 75, Delaware State 64  
Howard 83, UMES 55  
NC A&T 75, Bethune-Cookman 66  
NC A&T 53, Howard 52

#### ■ 16<sup>th</sup> GREENSBORO, N.C. — 1987

Bethune-Cookman 64, Delaware State 63  
NC A&T 80, Florida A&M 65  
SC State 81, UMES 76 (OT)  
Howard 63, Bethune-Cookman 56  
NC A&T 73, SC State 65  
NC A&T 79, Howard 58

#### ■ 17<sup>th</sup> GREENSBORO, N.C. — 1988

Florida A&M 104, Delaware State 73  
SC State 88, UMES 77  
Howard 65, Morgan State 59  
Florida A&M 64, SC State 59  
NC A&T 67, Howard 62  
NC A&T 101, Florida A&M 86

#### ■ 18<sup>th</sup> GREENSBORO, N.C. — 1989

SC State 89, Howard 75  
Florida A&M 112, Delaware State 105  
Coppin State 71, NC A&T 58  
Morgan State 88, Bethune-Cookman 56  
Florida A&M 76, Coppin State 74  
SC State 71, Morgan State 69  
SC State 83, Florida A&M 79

#### ■ 19<sup>th</sup> GREENSBORO, N.C. — 1990

Coppin State 90, Morgan State 67  
Florida A&M 69, Howard 53  
SC State 78, Bethune-Cookman 71  
NC A&T 65, Delaware State 75  
Coppin State 48, SC State 37  
NC A&T 65, Florida A&M 64  
Coppin State 54, NC A&T 50

#### ■ 20<sup>th</sup> NORFOLK, VA. — 1991

Bethune-Cookman 81, UMES 71  
Florida A&M 87, NC A&T 77  
Delaware State 95, Howard 93  
Morgan State 73, SC State 72  
Coppin State 92, Bethune-Cookman 67  
Delaware State 93, Morgan State 78  
Florida A&M 74, Coppin State 70  
Florida A&M 84, Delaware State 80 (OT)

#### ■ 21<sup>st</sup> NORFOLK, VA. — 1992

Bethune-Cookman 90, UMES 70  
Howard 58, Bethune-Cookman 54  
SC State 98, Coppin State 91  
Morgan State 75, NC A&T 70  
Florida A&M 78, Delaware State 73  
Howard 76, SC State 73  
Florida A&M 74, Morgan State 69  
Howard 67, Florida A&M 65

#### ■ 22<sup>nd</sup> NORFOLK, VA. — 1993

Howard 86, Bethune-Cookman 72  
Coppin State 65, Howard 57  
Florida A&M 90, Morgan State 87  
Delaware State 88, NC A&T 79  
SC State 59, UMES 57  
Coppin State 81, Florida A&M 69  
Delaware State 75, SC State 64  
Coppin State 80, Delaware State 53

#### ■ 23<sup>rd</sup> BALTIMORE, MD. — 1994

Morgan State 70, Florida A&M 66  
Morgan State 61, Coppin State 60  
UMES 91, Delaware State 76  
NC A&T 61, Howard 57 (OT)  
SC State 73, Bethune-Cookman 69  
NC A&T 76, UMES 73  
SC State 69, Morgan State 63  
NC A&T 87, SC State 70

#### ■ 24<sup>th</sup> BALTIMORE, MD. — 1995

Delaware State 100, Florida A&M 73  
Coppin State 83, Delaware State 57  
SC State 82, Morgan State 72  
NC A&T 69, Howard 66 (OT)  
Bethune-Cookman 78, UMES 71  
NC A&T 70, SC State 60  
Coppin State 88, Bethune-Cookman 75  
NC A&T 66, Coppin State 64

#### ■ 25<sup>th</sup> TALLAHASSEE, FLA. — 1996

Coppin State 83, Howard 63  
Delaware State 59, UMES 56  
SC State 79, Florida A&M 58  
NC A&T 75, Bethune-Cookman 74  
SC State 69, NC A&T 46  
Coppin State 78, Delaware State 64  
SC State 69, Coppin State 56

#### ■ 26<sup>th</sup> NORFOLK, VA. — 1997

UMES 76, Howard 70  
Coppin State 90, UMES 88  
SC State 85, Delaware State 82 (OT)  
NC A&T 65, Morgan State 54  
Bethune-Cookman 70, Florida A&M 61  
Coppin 76, Bethune-Cookman 70  
NC A&T 54, SC State 49  
Coppin 81, NC A&T 74 (OT)

#### ■ 27<sup>th</sup> RICHMOND, VA. — 1998

Howard 79, Bethune-Cookman 77 (OT)  
Coppin State 82, Howard 66  
SC State 64, NC A&T 58  
Morgan State 72, UMES 51  
Florida A&M 88, Delaware State 73  
Coppin State 77, Florida A&M 65  
SC State 82, Morgan State 69  
SC State 66, Coppin State 61

#### ■ 28<sup>th</sup> GREENSBORO, N.C. — 1999

Florida A&M 68, Howard 46  
UMES 90, Delaware State 75  
SC State 61, UMES 56  
Bethune-Cookman 50, NC A&T 61  
Morgan State 67, Hampton 66  
Coppin State 69, Florida A&M 80  
SC State 61, NC A&T 58  
Florida A&M 62, Morgan State 56  
Florida A&M 64, SC State 61

#### ■ 29<sup>th</sup> RICHMOND, VA. — 2000

NC A&T 94, Howard 69  
UMES 60, Morgan State 58  
Florida A&M 69, Delaware State 66  
SC State 61, Florida A&M 51  
Coppin State 73, UMES 61  
Hampton 98, NC A&T 88 (OT)  
Bethune-Cookman 80, Norfolk State 75  
SC State 88, Bethune-Cookman 66  
Coppin State 64, Hampton 60  
SC State 70, Coppin State 53

#### ■ 30<sup>th</sup> RICHMOND, VA. — 2001

Morgan State 76, UMES 64  
NC A&T 86, Florida A&M 70  
Bethune-Cookman 63, Howard 62  
Hampton 76, Morgan State 64  
SC State 53, Bethune-Cookman 47  
Norfolk State 78, Coppin State 66  
NC A&T 83, Delaware State 73  
Hampton 94, Norfolk State 67  
SC State 57, NC A&T 53  
Hampton 70, SC State 68

#### ■ 31<sup>st</sup> RICHMOND, VA. — 2002

Morgan State 94, Florida A&M 91  
Bethune-Cookman 82, UMES 70  
Coppin State 61, Norfolk State 46  
Hampton 93, Morgan State 70  
Howard 71, Bethune-Cookman 52  
Delaware State 54, Coppin State 45  
SC State 63, NC A&T 61  
Hampton 80, SC State 70  
Howard 65, Delaware State 56

#### ■ 32<sup>nd</sup> RICHMOND, VA. — 2003

Norfolk State 76, NC A&T 55  
Howard 71, UMES 69  
Bethune-Cookman 104, Morgan State 103  
SC State 76, Bethune-Cookman 73  
Howard 68, Delaware State 65  
Florida A&M 56, Coppin State 53  
Hampton 64, Norfolk State 62  
SC State 72, Florida A&M 68  
Hampton 73, Howard 64  
SC State 72, Hampton 67

#### ■ 33<sup>rd</sup> RICHMOND, VA. — 2004

Norfolk State 58, NC A&T 43  
Morgan State 60, Howard 59  
UMES 51, Bethune-Cookman 50  
SC State 84, UMES 56  
Coppin State 68, Morgan State 65 (OT2)  
Florida A&M 72, Hampton 71  
Delaware State 67, Norfolk State 56  
Florida A&M 65, SC State 53  
Coppin State 55, Delaware State 52  
Florida A&M 58, Coppin State 51

#### ■ 34<sup>th</sup> RICHMOND, VA. — 2005

Morgan State 77, Maryland Eastern Shore 56  
Florida A&M 80, Howard 56  
Bethune-Cookman 76, NC A&T 62  
Delaware State 66, Bethune-Cookman 43  
Hampton 81, Florida A&M 72  
SC State 76, Norfolk State 59  
Coppin State 60, Morgan State 43  
Delaware State 61, SC State 48  
Hampton 62, Coppin State 50  
Delaware State 55, Hampton 53

#### ■ 35<sup>th</sup> RALEIGH, N.C. — 2006

Norfolk State 73, UMES 71  
Howard 62, NC A&T 52  
Hampton 63, Morgan State 51  
Delaware State 59, Howard 47  
Norfolk State 79, Coppin State 67  
Hampton 57, Bethune-Cookman 55  
SC State 60, Florida A&M 52  
Delaware State 63, SC State 51  
Hampton 73, Norfolk State 56  
Hampton 60, Delaware State 56

#### ■ 36<sup>th</sup> RALEIGH, N.C. — 2007

Hampton 76, Howard 61  
Coppin State 56, Bethune-Cookman 44  
Norfolk State 81, Maryland Eastern Shore 70  
Delaware State 68, Coppin State 49  
Florida A&M 61, Hampton 58  
North Carolina A&T 81, Norfolk State 66  
Morgan State 66, South Carolina State 64  
Delaware State 56, Morgan State 53, OT  
Florida A&M 74, N.C. A&T 66  
Florida A&M 58, Delaware State 56

#### ■ 37<sup>th</sup> RALEIGH, N.C. — 2008

Coppin State 55, Howard 54  
South Carolina State 78, Bethune-Cookman 69  
Florida A&M 70, Maryland Eastern Shore 61  
Morgan State 77, South Carolina State 68  
Hampton 74, Coppin State 75 OT  
Norfolk State 69, Florida A&M 61  
Delaware State 64, N.C. A&T 62  
Morgan State 61, Delaware State 55  
Coppin State 67, Norfolk State 65  
Coppin State 62, Morgan State 60



# All-Time Records and Conference Champions



## MEAC MEN'S BASKETBALL ALL-TIME WIN-LOSS RECORD

### (Regular Season Games 1971-2008)

Team	Won	Lost	Pct.	MEAC Titles
Hampton	205	167	.551	3
Coppin State	363	315	.542	4
North Carolina A&T	511	478	.517	15
South Carolina State	549	485	.591	5
Howard	411	576	.416	3
Norfolk State	133	180	.425	0
Delaware State	426	578	.425	0
Morgan State	356	542	.396	1
FAMU	294	430	.406	4
Maryland E. Shore	300	656	.313	1
Bethune-Cookman	247	482	.338	0
*N.C. Central	60	155	.279	0

\* Denotes no longer with conference

### (Conference-only 1971-2008)

Team	Won	Lost	Pct.	Reg. Season Titles
Coppin State	246	114	.683	8
North Carolina A&T	313	225	.582	11
South Carolina State	339	213	.614	7
Norfolk State	104	74	.584	0
Howard	247	291	.459	4
Hampton	138	121	.533	2
Florida A&M	193	190	.504	0
Morgan State	232	262	.470	1
Delaware State	250	288	.465	2
Bethune-Cookman	167	275	.379	0
Maryland E. Shore	169	357	.321	2
*N.C. Central	27	69	.281	0

\* Denotes no longer with conference

### MEN'S ALL-TIME MEAC REGULAR SEASON CHAMPIONS 1971-2008

1971-72	North Carolina A&T
1972-73	Maryland E.-Shore
1973-74	Maryland E.-Shore
1974-75	North Carolina A&T
1975-76	North Carolina A&T
1976-77	South Carolina State
1977-78	North Carolina A&T
1978-79	North Carolina A&T
1979-80	Howard
1980-81	North Carolina A&T
1981-82	North Carolina A&T
1982-83	Howard
1983-84	North Carolina A&T
1984-85	North Carolina A&T
1985-86	North Carolina A&T
1986-87	Howard
1987-88	North Carolina A&T
1988-89	South Carolina State
1989-90	Coppin State
1990-91	Coppin State
1991-92	Howard
1992-93	Coppin State
1993-94	Coppin State
1994-95	Coppin State
1995-96	South Carolina State/Coppin State
1996-97	Coppin State
1997-98	Coppin State
1998-99	South Carolina State
1999-00	South Carolina State
2000-01	Hampton
2001-02	Hampton
2002-03	South Carolina State
2003-04	South Carolina State/Coppin State
2004-05	Delaware State
2005-06	Delaware State
2006-07	Delaware State
2007-08	Morgan State

### MEN'S ALL-TIME MEAC TOURNAMENT CHAMPIONS 1972-2008

1972	North Carolina A&T
1973	North Carolina A&T
1974	Maryland E.-Shore
1975	North Carolina A&T
1976	North Carolina A&T
1977	Morgan State
1978	North Carolina A&T
1979	North Carolina A&T
1980	Howard
1981	Howard
1982	North Carolina A&T
1983	North Carolina A&T
1984	North Carolina A&T
1985	North Carolina A&T
1986	North Carolina A&T
1987	North Carolina A&T
1988	North Carolina A&T
1989	South Carolina State
1990	Coppin State
1991	Florida A&M
1992	Howard
1993	Coppin State
1994	North Carolina A&T
1995	North Carolina A&T
1996	South Carolina State
1997	Coppin State
1998	South Carolina State
1999	Florida A&M
2000	South Carolina State
2001	Hampton
2002	Hampton
2003	South Carolina State
2004	Florida A&M
2005	Delaware State
2006	Hampton
2007	Florida A&M
2008	Coppin State

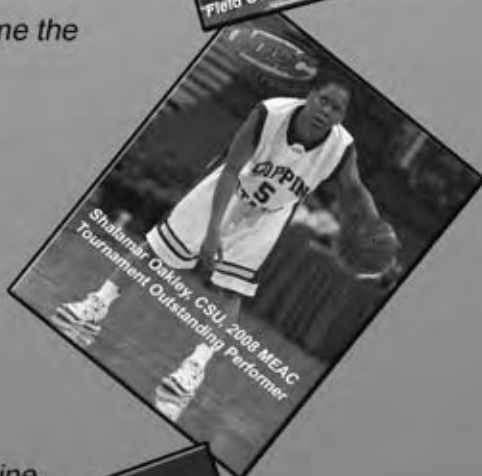




In 1969, a bold ad hoc group of innovators long associated with intercollegiate athletics met in Durham, N.C., to discuss the feasibility of organizing a new conference.



After adopting a program, several institutions agreed to become the Mid-Eastern Athletic Conference.



The league was confirmed in 1970, kicking off its first season of competition in football in 1971.

On June 8, 1980, the MEAC was classified as a Division I conference by the NCAA.



Today, the Mid-Eastern Athletic Conference sponsors 15 championships and is made up of 12 outstanding academic institutions across the Atlantic coastline.



Dr. Dennis E. Thomas, Commissioner

*"Educating Student-Athletes For the Game of Life"*



[www.MEACsports.com](http://www.MEACsports.com)



**NEIGHBORS ADMIRE YOUR NEW RIDE.**  
**GOOD NEIGHBORS HELP YOU PROTECT IT.**

That car in your driveway could be nothing more than a way to get from A to B. Or it could be the result of years of hard work and dedication. Come talk with a State Farm® agent about your auto coverage so we can help you get the right coverage at the right price.



**LIKE A GOOD NEIGHBOR,  
STATE FARM IS THERE.™**

[statefarm.com](https://statefarm.com)®



russellathletic.com



# HUSTLE

SOUNDS A LOT LIKE FLOOR BURNS



Official Uniform and Ball Partner of the

