

OKLAHOMA

Karl Anderson, Assistant Director of Athletics Communications

180 West Brooks, Suite 2525 | Norman, OK 73019
Office: (405) 325-8571 | Cell: 405-595-7659
E-Mail: karl.anderson@ou.edu
www.SoonerSports.com | Twitter: @OU_Softball

11 BIG 12 PLAYERS OF THE YEAR | 4 BIG 12 PITCHERS OF THE YEAR | 5 BIG 12 FRESHMEN OF THE YEAR | 85 ALL-BIG 12 FIRST TEAM HONORS | 127 WEEKLY BIG 12 HONORS

FEBRUARY

Puerto Vallarta College Challenge

9	vs. #2/2 Auburn	Puerta Vallarta, Mex.	ESPNU	1 p.m.
	vs. RV/NR BYU	Puerta Vallarta, Mex.		4 p.m.
10	vs. RV/RV Nebraska	Puerta Vallarta, Mex.		11 a.m.
11	vs. #13/13 Washington	Puerta Vallarta, Mex.		3:30 p.m.

Rawlings Classic

17	vs. Incarnate Word	Houston, Texas		9 a.m.
	vs. Ole Miss	Houston, Texas		2 p.m.
18	at Houston	Houston, Texas		4:30 p.m.
	at Houston	Houston, Texas		7 p.m.

Mary Nutter Collegiate Classic

23	vs. Louisville	Palm Springs, Calif.		2:30 p.m.
	vs. Tennessee	Palm Springs, Calif.		5 p.m.
24	vs. NC State	Palm Springs, Calif.		5 p.m.
	vs. UCLA	Palm Springs, Calif.		7:30 p.m.
25	vs. Notre Dame	Palm Springs, Calif.		12 p.m.

MARCH

1	at Wichita State	Wichita, Kan.		5 p.m.
---	------------------	---------------	--	--------

Courtyard Marriott Tournament

3	Northwestern State	Norman	SSTV	3:30 p.m.
	Evansville	Norman	SSTV	6 p.m.
4	Western Kentucky	Norman	SSTV	1 p.m.
	TBD	Norman		6 p.m.
5	TBD	Norman		TBD
8	Tulsa	Norman	SSTV	6 p.m.

OU Tournament

10	Omaha	Norman	SSTV	6 p.m.
11	Omaha	Norman	SSTV	1:30 p.m.
	Illinois-Chicago	Norman	SSTV	4 p.m.
12	Illinois-Chicago	Norman	SSTV	1:30 p.m.

Long Beach State Tournament

14	vs. Arizona	Long Beach, Calif.		12 p.m.
	at Long Beach State	Long Beach, Calif.		5 p.m.

LMU Tournament

16	vs. CSU Bakersfield	Los Angeles, Calif.		12 p.m.
	at LMU	Los Angeles, Calif.		4 p.m.
17	vs. Cal Poly	Los Angeles, Calif.		10 a.m.
18	vs. Cal Poly	Los Angeles, Calif.		11 a.m.
	vs. DePaul	Los Angeles, Calif.		1 p.m.

College Preview Tournament

24	Mississippi State	Norman	SSTV	6 p.m.
25	vs. Louisiana Tech	Oklahoma City		2:30 p.m.
	vs. UAB	Oklahoma City		5 p.m.
26	UAB	Norman	SSTV	11 a.m.
28	at North Texas	Denton, Texas		6 p.m.
31	Iowa State*	Norman		6 p.m.

APRIL

1	Iowa State*	Norman		2 p.m.
2	Iowa State*	Norman		12 p.m.
5	Arkansas	Norman	SSTV	5 p.m.
7	at Texas*	Austin, Texas	LHN	4:30 p.m.
8	at Texas*	Austin, Texas	LHN	1 p.m.
9	at Texas*	Austin, Texas	LHN	12 p.m.
13	at Kansas*	Lawrence, Kan.		5 p.m.
14	at Kansas*	Lawrence, Kan.		5 p.m.
15	at Kansas*	Lawrence, Kan.		2 p.m.
21	Baylor*	Norman	SSTV	6:30 p.m.
22	Baylor*	Norman	ESPN2	2 p.m.
23	Baylor*	Norman	ESPN2	1 p.m.
28	at Texas Tech*	Lubbock, Texas		6 p.m.
29	at Texas Tech*	Lubbock, Texas		4 p.m.
30	at Texas Tech*	Lubbock, Texas		12 p.m.

MAY

3	at Oklahoma State*	Stillwater, Okla.	ESPNU	6:30 p.m.
5	Oklahoma State*	Norman	SSTV	6 p.m.
6	at Oklahoma State*	Stillwater, Okla.	ESPNU	6:30 p.m.

Big 12 Championship

12-13	TBD	Oklahoma City		TBD
-------	-----	---------------	--	-----

NCAA Regionals

19-21	TBD	TBD		TBD
-------	-----	-----	--	-----

NCAA Super Regionals

25-28	TBD	TBD		TBD
-------	-----	-----	--	-----

JUNE

Women's College World Series

1-7	TBD	Oklahoma City		TBD
-----	-----	---------------	--	-----

All Times CT | * Big 12 game | Rankings (NCAA/USA) as of game day
LHN - Longhorn Network | SSTV - Sooner Sports TV



#2/2 Auburn
2016 Record: 58-12, 16-7 SEC
2016 Postseason: WCWS
2016 Team Slash: .317/.437/.525
2016 Team ERA: 2.19

Series History: OU leads 4-1
Streak: OU won 1

RV/NR BYU
2016 Record: 36-21, 12-3 WCC
2016 Postseason: Regionals
2016 Team Slash: .295/.380/.471
2016 Team ERA: 3.13

Series History: OU leads 5-1
Streak: OU won 4

RV/RV Nebraska
2016 Record: 35-21, 13-9 B1G
2016 Postseason: Regionals
2016 Team Slash: .294/.390/.474
2016 Team ERA: 3.93

Series History: NU leads 44-42
Streak: OU won 1

#13/13 Washington
2016 Record: 39-15, 16-8 PAC-12
2016 Postseason: Supers
2016 Team Slash: .337/.434/.558
2016 Team ERA: 3.14

Series History: tied 11-11
Streak: UW won 1

► Beginning its 46th season and ranked 1st unanimously in both the NFCA and USA Softball preseason polls, reigning national champion and five-time defending Big 12 champion Oklahoma opens the 2017 season this weekend at the Puerto Vallarta College Challenge hosted by Triple Crown Sports at Nancy Almaraz Stadium. Oklahoma is 32-13 all-time in season openers and has won five of its past seven openers.

► The Sooners will play four games this weekend beginning with a matchup against No. 2/2 Auburn Thursday on ESPN2. This marks the fifth straight season OU has opened against a top-25 team, going 2-2 previously. The Sooners also play BYU Thursday before taking on Nebraska Friday and No. 13/13 Washington Saturday to close out the tournament.

► Thursday's game with Auburn marks the first ever No. 1 vs. No. 2 (NFCA) matchup in OU program history. The Sooners are 35-3 all-time as the No. 1 team in the country.

► This the first time in program history that the Sooners are playing outside of the United States.

OU OPENS 2017 AS UNANIMOUS NO. 1

► Oklahoma is the unanimous No. 1 in both the USA Today/ NFCA Division I Preseason Coaches Poll and the ESPN.com/ USA Softball Collegiate Top 25. It's the first time in program history the Sooners enter the season as the top-ranked team in the country in either poll.

► Previously, OU's best preseason ranking was No. 2, which occurred in 2014 and 2013 for both polls and 2002 for the NFCA. This is just the fourth time in the NFCA poll's history, which dates back to 1995, that there has been a unanimous No. 1 in the preseason poll. Oklahoma received all 32 first-place votes to join Arizona State in 2012, Washington in 2010 and Arizona in 1998 as the only teams to do it.

► Oklahoma is one of four teams along with Michigan, UCLA and Washington to be ranked in every single NFCA Preseason Poll; the Sooners' average preseason rank is 8.0. OU also kept up its run of being ranked every week in the 23-year existence of the NFCA's poll, 322 weeks in all.

► Overall, the Sooners rank third in NFCA history with 17 top-10 appearances in the preseason poll and are tied for third with nine top-five appearances. Only two schools have more appearances in the NFCA Preseason Top 10 than Oklahoma.

► This is the seventh straight season that the Sooners have started ranked in the NFCA's Top 10, which is the second longest active streak in the country behind Alabama (12). In fact, OU has been ranked in the top five in five of the past six years, which is tied with Alabama and Florida for the most over that stretch.

WCWS CHAMPIONSHIP SERIES REMATCH

► Oklahoma opens the season against Auburn in a rematch of the 2016 Women's College World Series Championship Series. The Sooners won game one, 3-2, before the Tigers secured an 11-7 victory in eight innings in game two to force a game three. In the final game, Paige Parker's complete game was aided by a two-run first inning in a 2-1 victory for Oklahoma, giving the Sooners their third national championship, a feat only accomplished by UCLA (11) and Arizona (8).

► This is the first time since the WCWS began in 1982 that teams playing for the national title opened the following season against one another. It will be the 23rd time that the teams face each other at some point the following year, including each of the last four years. Teams that won the WCWS are 49-24 when teams meet again the next season, though the average final score in those games is relatively close, 3.5-2.0.

► For Oklahoma, this will be its second WCWS rematch. OU swept Tennessee in two games in the 2013 WCWS to win its second national title, then took down the Lady Vols in the 2014 Super Regionals, 2-1, in a best-of-three series.

► The Sooners are 4-1 all-time against the Tigers, including a 3-1 advantage at neutral sites. In addition to the 2016 WCWS, OU also posted wins in 2002 (6-2) and 2011 (6-0).

CAREER NUMBERS VS. AUBURN

Player	G	AB	R	H	RBI	XB	HR	BB	K	SB	AVG/OBP/SLG
Arnold	3	6	2	1	0	0	0	1	0	0	.167/.286/.167
Aviu	3	10	0	4	2	0	0	0	1	0	.400/.400/.400
Clifton	3	9	2	3	1	0	0	0	1	0	.333/.333/.333
Knighten	3	7	1	3	1	0	0	2	0	0	.429/.556/.429
Pendley	3	10	0	1	1	0	0	0	0	0	.100/.100/.100
Rogers	2	0	1	0	0	0	0	0	0	0	---/--/--
Romero	3	9	2	3	4	1	1	0	1	0	.333/.333/.667
Wodach	3	8	0	2	0	0	0	1	0	0	.250/.333/.250

Player	G	GS	W-L	IP	H	R	ER	BB	K	AVG	ERA
Parker	2	2	2-0	14.0	9	3	3	4	6	.176	1.50



Oklahoma Sooners Softball

@OU_Softball

@OU_Softball

OU Softball Pronunciation Guide

Patty Gasso.....	GAS-oh
JT Gasso.....	GAS-oh
Andrea Gasso.....	on-DRAY-uh GAS-oh
Fale Aviu.....	FALL-lay uh-VIEW
Caleigh Clifton.....	CALE-ee
Vanessa Taukeiaho.....	TAWK-ee-ah-HO
Lea Wodach.....	WO-dak

THE UNIVERSITY

Location.....	Norman, Okla.
Founded.....	1890
Enrollment.....	30,813
Nickname.....	Sooners
Colors.....	Crimson and Cream
Conference.....	Big 12
President.....	David Boren
VP/Director of Athletics.....	Joe Castiglione

OKLAHOMA PROGRAM HISTORY

First Year of Softball.....	1975
All-Time Record.....	1,644-762-2 (.683)
All-Time Big 12 Record.....	290-84 (.775)
Big 12 Titles (Regular Season/Championship).....	9/4
NCAA Tournament Appearances.....	23 (1994-2016)
Super Regional Appearances.....	10 (2005, '07-'08, '10-'16)
WCWS Appearances.....	10 (2000-'04, '11-'14, '16)
National Championships.....	3 (2000, 2013, 2016)

STAFF INFORMATION

Head Coach.....	Patty Gasso (Long Beach State, 1984)
Career Record.....	1,246-372-3 (.770) [27th year]
Record at OU.....	1,085-313-2 (.776) [23rd year]
Assoc. Head Coach.....	Melyssa Lombardi (Oklahoma, 1997)
Asst. Coach.....	JT Gasso (East Central University, 2011)
Volunteer Asst. Coach.....	Andrea Gasso (UCLA, 2012)
Director of Operations.....	Jackie Livingston

STADIUM INFORMATION

Stadium.....	OU Softball Complex
Field (Capacity).....	Marita Hynes Field (1,378)
All-Time Stadium Record.....	408-58-1 (.875)
All-Time Big 12 Record.....	132-32 (.805)

2017 OUTLOOK

Letterwinners Returning/Lost.....	11/8
Position Starters Returning/Lost.....	7/2
Primary Pitchers Returning/Lost.....	1/3
Newcomers.....	7
All-Americans Returning/Lost.....	2/1

RETURNING IN 2017

Hits.....	71.6% (452/631)
Doubles.....	64.0% (64/100)
Triples.....	76.9% (10/13)
Home Runs.....	77.1% (54/70)
Runs Batted In.....	71.7% (284/396)
Walks.....	71.6% (149/208)
Stolen Bases.....	77.5% (62/80)
Innings Pitched.....	59.0% (252.1/427.1)
Wins.....	66.7% (38/57)
Shutouts.....	63.6% (14/22)
Strikeouts.....	62.1% (269/433)

2016 TEAM INFORMATION

2016 Overall Record.....	57-8
2016 Conference Record (Finish).....	17-1 (First)
2016 NCAA Postseason.....	National Champions
2016 NFCA Final Ranking.....	1

#	Name	Pos.	B/T	Ht.	Cl.	Exp.	Hometown (Previous School)
1	Nicole Pendley	OF	L/L	5-5	Jr.	2L	Rio Rancho, N.M. (Rio Rancho HS)
2	Sydney Romero	INF	R/R	5-7	So.	1L	San Diego, Calif. (Vista Murrieta HS)
3	Kelsey Arnold*	INF	L/R	5-2	Jr.	2L	Tulsa, Okla. (Holland Hall Prep)
4	Hannah Sparks	C	R/R	6-1	Jr	TR	Thomasville, Ala. (NW Florida St. College)
6	Macey Hatfield	UTL	R/R	5-7	Sr.	3L	Maysville, Okla. (Seminole State)
8	Paige Parker	LHP	L/L	5-11	Jr.	2L	Independence, Mo. (Truman HS)
11	Nicole Mendes	UTL	L/L	5-7	Fr.	HS	Houston, Texas (Home School)
14	Paige Lowary	LHP	L/L	5-10	Jr.	TR	Dallas Center, Iowa (Univ. of Missouri)
15	Lea Wodach	C	R/R	5-7	Jr.	2L	Coto de Caza, Calif. (Tesoro HS)
17	Shay Knighten	INF	R/R	5-6	So.	1L	Buena Park, Calif. (Sunny Hills HS)
18	Melanie Olmos	RHP	R/R	5-5	Fr.	HS	Riverside, Calif. (Grand Terrace HS)
20	Caleigh Clifton	INF	R/R	5-8	So.	1L	Wayne, Okla. (Wayne HS)
22	Alissa Dalton	INF	L/R	5-7	Fr.	HS	Cypress, Texas (Cy-Fair HS)
24	Raegan Rogers	OF	R/R	5-4	So.	1L	Blanchard, Okla. (Bridge Creek HS)
27	Kylie Lundberg	OF	L/L	6-0	So.	1L	Lakewood, Calif. (Lakewood HS)
33	Vanessa Taukeiaho	OF	R/R	5-5	Fr.	HS	Rancho Cucamonga, Calif. (Etiwanda HS)
34	Fale Aviu	OF	L/R	5-4	So.	1L	Oceanside, Calif. (Rancho Buena Vista HS)
42	Mariah Lopez	RHP	R/R	5-8	Fr.	HS	Saugus, Calif. (Saugus HS)

* Team Captain | **Head Coach:** Patty Gasso | **Associate Head Coach:** Melyssa Lombardi | **Assistant Coach:** JT Gasso
Volunteer Asst. Coach: Andrea Gasso | **Graduate Student Managers:** Jackie Bishop, Lacey Waldrop, Brittany Williams

FACING BYU

► Oklahoma is 5-1 all-time against BYU, including a 3-1 mark at neutral sites. The two teams met a year ago in Norman with OU winning 8-0 in five innings and 3-0.

► In the first meeting last year, Paige Parker threw the fifth no-hitter of career as she struck out 11, allowed just one walk in the first inning and retired the final 13 batters she faced. Offensively, Sydney Romero came a home run short of becoming the first player in school history to hit for the cycle. She led off the game with a triple, added an RBI double in the fourth and had a walk-off single with the bases loaded in the fifth.

► Parker came back the next day and took a no-hitter into the seventh inning before settling for a two-hit outing. Tied 0-0 in the bottom of the sixth, OU's offense broke through as then-senior Kady Self had an RBI single and then-freshman Caleigh Clifton added a two-run double.

CAREER NUMBERS VS. NEBRASKA

Player	G	AB	R	H	RBI	XB	HR	BB	K	SB	AVG	OBP	SLG
Arnold	2	4	0	0	0	0	0	0	0	0	.000	.000	.000
Aviu	2	4	1	1	0	0	0	1	1	0	.250	.333	.250
Clifton	2	5	0	2	3	1	0	1	1	1	.400	.500	.600
Parker	2	5	0	3	0	0	0	1	0	0	.600	.667	.600
Pendley	2	6	1	1	0	0	0	0	1	0	.167	.167	.167
Rogers	1	0	1	0	0	0	0	0	0	0	---	---	---
Romero	2	6	1	4	2	3	0	0	1	0	.667	.714	1.333
Wodach	2	5	2	2	0	0	0	1	0	0	.400	.500	.400

Player	G	GS	W-L	IP	H	R	ER	BB	K	AVG	ERA
Parker	2	2	2-0	12.0	2	0	0	3	16	.054	0.00

FACING NEBRASKA

► Oklahoma and Nebraska will meet for the seventh time since the Cornhuskers left the Big 12 for the Big Ten after the 2011 season, with OU going 4-2 in those previous matchups. All-time, the Huskers have a 44-42 lead in the series, but OU is up 29-22 since Patty Gasso became head coach in 1995.

► The teams met last season in Fullerton, Calif., as OU posted a 4-2 win. Nicole Pendley drove in three of the four runs for Oklahoma, while Paige Parker threw 7.0 shutout innings in relief to earn the victory.

► Oklahoma sophomore Shay Knighten, the 2016 Big 12 Freshman of the Year and a second-team All-American, is the younger sister of Nebraska senior MJ Knighten, a 2016 first-team All-American and three-time All-Big Ten selection. Here's a look at how each performed during their freshman seasons.

Player	G	AB	R	H	RBI	XB	HR	BB	K	AVG	OBP	SLG
Shay	60	179	48	71	62	23	13	17	23	.397	.449	.670
MJ	62	180	32	56	38	16	6	21	23	.311	.395	.478

► OU sophomore Sydney Romero went to high school with Nebraska freshman Tristen Edwards at Vista Murrieta HS in Murrieta, Calif. The Cornhuskers also have one Oklahoman on their roster: freshman Alexis Perry from Oklahoma City (Putnam City HS).

CAREER NUMBERS VS. NEBRASKA

Player	G	AB	R	H	RBI	XB	HR	BB	K	SB	AVG	OBP	SLG
Arnold	1	2	0	0	0	0	0	0	0	0	.000	.000	.000
Aviu	1	1	1	1	0	0	0	0	0	1	1.000	1.000	1.000
Clifton	1	2	2	1	0	1	0	0	0	0	.500	.667	1.000
Hatfield	1	1	0	0	0	0	0	0	0	0	.000	.000	.000
Knighten	1	3	1	1	0	1	0	0	1	0	.333	.333	.667
Parker	1	2	0	0	0	0	0	0	0	0	.000	.000	.000
Pendley	1	2	0	1	3	0	0	0	0	0	.500	.333	.500
Romero	1	2	0	0	0	0	0	1	0	0	.000	.333	.000
Wodach	1	3	0	1	0	0	0	0	0	0	.333	.333	.333

Player	G	GS	W-L	IP	H	R	ER	BB	K	AVG	ERA
Parker	1	0	1-0	7.0	2	0	0	3	6	.095	0.00

FACING WASHINGTON

► The all-time series is tied 11-11 between Oklahoma and Washington, including a 9-8 mark for UW at neutral sites. OU has won four of the last six meetings, though the Huskies have taken two of the last three, including a 10-3 victory last year. This marks the fifth straight season the teams have met.

CAREER NUMBERS VS. WASHINGTON

Player	G	AB	R	H	RBI	XB	HR	BB	K	SB	AVG	OBP	SLG
Arnold	2	6	2	2	0	0	0	0	0	0	.333	.333	.333
Aviu	1	2	1	0	0	0	0	0	0	0	.000	.333	.000
Clifton	1	3	0	0	0	0	0	0	0	0	.000	.000	.000
Hatfield	2	2	0	0	0	0	0	0	0	0	.000	.000	.000
Parker	2	2	0	0	0	0	0	1	2	0	.000	.333	.000
Pendley	2	7	1	1	0	0	0	1	0	0	.143	.250	.143
Romero	1	4	0	1	1	1	0	0	0	0	.250	.250	.500
Wodach	2	5	0	1	0	0	0	0	2	0	.200	.200	.200

Player	G	GS	W-L	IP	H	R	ER	BB	K	AVG	ERA
Parker	2	1	0-0	7.1	7	7	7	2	2	.241	6.68

TOUGH SCHEDULE AWAITS SOONERS IN 2017

► Sixteen opponents that reached the 2016 NCAA Softball Tournament, including WCWS participants Auburn and UCLA, highlight Oklahoma's 2017 schedule.

► Oklahoma's 2017 schedule features seven teams ranked in the preseason polls, including three in the top 10: No. 2/2 (NFCA/USA) Auburn, No. 8/8 UCLA, No. 10/12 Arizona, No. 13/13 Washington, No. 15/15 Tennessee and No. 22/22 Notre Dame. BYU, Louisville, Nebraska, Ole Miss and Tulsa also received at least one vote in one of the polls.

USA TODAY/NFCA DIVISION I COACHES POLL (Preseason)

School	Record	Points	Previous
1. Oklahoma (32)	57-8	800	1
2. Auburn*	58-12	745	2
3. Florida State	55-10	683	4
T4. Florida	56-7	671	8
T4. LSU	52-18	671	3
6. Michigan	52-7	655	5
7. Alabama	51-14	633	6
8. UCLA*	40-16-1	534	9
9. Oregon	48-10	484	10
10. Arizona*	40-21	466	14
11. Louisiana Lafayette	46-9	444	12
12. Georgia	46-20	435	7
13. Washington*	39-15	430	13
14. James Madison	50-6	418	11
15. Tennessee*	43-16	331	17
16. Minnesota	43-14	295	20
17. Missouri	42-16	271	15
18. Utah	36-21	266	16
19. Texas A&M	39-20	258	19
20. Kentucky	46-14	250	18
21. Baylor*	45-14	171	21
22. Notre Dame*	43-13	121	23
23. Florida Atlantic	51-9	87	24
24. Fresno State	42-12-1	65	22
25. South Florida	45-16	47	25

Receiving votes: Oregon State (23), *Oklahoma State (22), *Texas (17), South Carolina (13), *Ole Miss (12), *Nebraska (12), UCF (10), *Tulsa (7), California (6), Cal State Fullerton (5), Arizona State (3), Northwestern (3), North Carolina (2), Ohio State (2), *BYU (1), USC Upstate (1).

ESPN.COM/USA SOFTBALL COLLEGIATE TOP 25 (Preseason)

School	Record	Points	Previous
1. Oklahoma (20)	57-8	500	1
2. Auburn*	58-12	462	2
3. Florida	56-7	436	8
4. Florida State	55-10	429	3
5. LSU	52-18	401	4
6. Michigan	52-7	398	5
7. Alabama	51-14	394	7
8. UCLA*	40-16-1	338	9
9. Oregon	48-10	299	11
10. Georgia	46-20	289	6
11. Louisiana-Lafayette	46-9	278	14
12. Arizona*	40-21	273	15
13. Washington*	39-15	269	13
14. Minnesota	43-14	227	19
15. Tennessee*	43-16	213	18
16. James Madison	50-6	211	10
17. Utah	36-21	178	16
18. Texas A&M	39-20	171	20
19. Missouri	42-16	155	12
20. Kentucky	46-14	138	17
21. Baylor*	45-14	122	21
22. Notre Dame*	43-13	80	25
23. Florida Atlantic	51-9	58	23
T24. California	33-24-1	25	RV
T24. South Florida	45-16	25	RV

Receiving votes: *Ole Miss (24), *Texas (20), *Oklahoma State (17), *Nebraska (14), FIU (12), Arizona State (11), Fresno State (10), Ohio State (10), North Dakota State (9), Cal State Fullerton (8), *Louisville (5), North Carolina (4), UCF (2), Oregon State (1), *Tulsa (1), Virginia Tech (1)

SOONERS IN THE RANKINGS

Date	Record	NFCA	USA	RPI
Preseason	0-0	1	1	N/A

► Within the Big 12, Baylor came in at No. 21/21, while Oklahoma State and Texas were receiving votes in each poll.

SOONERS ONCE AGAIN ATOP BIG 12 PRESEASON POLL

► For the fifth year in a row and the eighth time in the last nine years, the Oklahoma softball team has topped the Big 12 Preseason Poll. The Sooners got six of the seven first-place votes. Coaches are not allowed to vote for their own team.

► The Sooners led with 36 points, while Texas received the other first-place vote and ranked second with 30 points. Baylor was slotted third with 26 points, followed by Oklahoma State (22), Kansas (14), Texas Tech (13) and Iowa State (6).

OU TRIO NAMED TO USA SOFTBALL TOP 50 WATCH LIST

► Paige Parker, Shay Knighten and Sydney Romero were all named to the Top 50 "Watch List" for the 2017 USA Softball Collegiate Player of the Year award.

► OU tied for the most honorees of any school in the country along with Arizona, Auburn, Florida and Florida State. Parker is one of 18 juniors on the list, while Knighten and Romero represent two of the six sophomores.

► The Top 25 finalists will be announced April 12 with the Top 10 finalists announced on May 10 and the Top 3 on May 24. The 2017 USA Softball Collegiate Player of the Year will be revealed May 30. An athlete does not have to be on the Top 50 "Watch List" to be considered for the award, though the winner will come from those placed on the Top 25.

ROMERO, LOWARY INVITED TO TEAM USA TRYOUTS

► Sophomore infielder Sydney Romero and junior pitcher Paige Lowary are among 43 invitees for the 2017 USA Softball Women's National Team Selection Camp.

► The camp is scheduled to take place Jan. 1-5 at the Eddie C. Moore Softball Complex in Clearwater, Fla. Those athletes who accept the invitation to try out will vie for 17 spots on the 2017 USA Softball Women's National Team roster.

► During the selection process, athletes will participate in position drills as well as simulated games and be evaluated by the USA Softball Women's National Team Selection Committee. Athletes who make the 2017 USA Softball WNT roster will be competing at a Pan American Games/World Baseball Softball Confederation World Championship Qualifier in Florida, where the U.S. will look to qualify for the 2018 WBSC Women's World Championship to be held in Chiba, Japan and the 2019 Pan American Games to be held in Lima, Peru.

► Romero and Lowary each have connections with USA Softball in the past. Romero was chosen for the 2016 USA Softball Women's Elite Team in 2016, though she ultimately declined to play. Lowary was a member of the same Elite Team in 2015 and 2016.

DALTON SELECTED FOR JWNT TRAINING CAMP

► Oklahoma freshman Alissa Dalton is one of 24 athletes invited to training camp for the 2017 USA Softball Junior Women's National Team.

OKLAHOMA'S 2016 RECORD ...

Overall.....	57-8
Conference.....	17-1
Non-Conference.....	40-7
At home.....	24-2
On the road.....	12-1
At neutral sites.....	21-5
Day games.....	37-4
Night games.....	20-4
vs. left-handed starter.....	8-1
vs. right-handed starter.....	49-7
One-run games.....	5-1
Two-run games.....	8-3
Five or more run games.....	30-2
Extra innings.....	2-2
Shutouts.....	22-1
Run-Rule Games.....	16-0
vs. Top-25.....	15-5
Scoring 0-2 runs.....	3-2
Scoring 3-5 runs.....	17-3
Scoring 6-9 runs.....	25-2
Scoring 10+ runs.....	12-1

Opponent scores 0-2 runs.....	46-1
Opponent scores 3-5 runs.....	8-1
Opponent scores 6-9 runs.....	3-2
Opponent scores 10+ runs.....	0-4
When OU scores in 1st inning.....	25-4
When opponent scores in 1st inning.....	5-1
OU scores first.....	48-5
Opponent scores first.....	9-3
OU out-hits opponent.....	51-3
Opponent out-hits OU.....	3-5
Hits are tied.....	3-0
OU hits zero home runs.....	15-4
OU hits one home run.....	26-1
OU hits 2+ home runs.....	16-3
Opponent hits zero home runs.....	40-2
Opponent hits one home run.....	14-1
Opponent hits 2+ home runs.....	3-5
OU makes zero errors.....	36-4
OU makes one error.....	20-2
OU makes 2+ errors.....	1-2
Opponent makes zero errors.....	15-2
Opponent makes one error.....	24-2

Opponent makes 2+ errors.....	18-4
OU leads after fourth inning.....	44-2
OU trails after fourth inning.....	3-4
Game tied after fourth inning.....	10-2
OU leads after fifth inning.....	36-1
OU trails after fifth inning.....	1-3
Game tied after fifth inning.....	7-4
OU leads after sixth inning.....	36-1
OU trails after sixth inning.....	1-4
Game tied after sixth inning.....	4-3
In February.....	10-4
In March.....	14-2
In April.....	16-1
In May.....	12-0
In June.....	5-1
On Monday.....	1-0
On Tuesday.....	0-1
On Wednesday.....	6-1
On Thursday.....	2-1
On Friday.....	18-4
On Saturday.....	20-1
On Sunday.....	10-0

LONGEST HITTING STREAKS

	Current	2016	Career
Fale Aviu	4	6	6
Caleigh Clifton	3	5	5
Lea Wodach	2	15	15
Kylie Lundberg	1	1	1
Sydney Romero	-	10	10
Kelsey Arnold	-	9	9
Shay Knighten	-	9	9
Nicole Pendley	-	8	9
Paige Parker	-	5	9
Macey Hatfield	-	5	5
Raegan Rogers	-	1	1

2016 MULTIPLE HIT GAMES

(career # in parentheses)	2	3	4	5+	Total
S. Romero	16 (16)	5 (5)	-	-	21 (21)
K. Arnold	16 (22)	3 (4)	-	-	19 (26)
F. Aviu	18 (18)	1 (1)	-	-	19 (19)
S. Knighten	14 (14)	5 (5)	-	-	19 (19)
N. Pendley	14 (25)	- (4)	1 (2)	-	15 (31)
L. Wodach	7 (8)	3 (4)	1 (1)	-	11 (13)
C. Clifton	3 (3)	3 (3)	-	-	6 (6)
M. Hatfield	3 (6)	- (1)	-	-	3 (7)
P. Parker	1 (15)	- (2)	-	-	1 (17)

2016 MULTIPLE RBI GAMES

(career # in parentheses)	2	3	4	5+	Total
S. Knighten	10 (10)	3 (3)	4 (4)	1 (1)	18 (18)
C. Clifton	12 (12)	-	1 (1)	-	13 (13)
F. Aviu	7 (7)	2 (2)	2 (2)	1 (1)	12 (12)
N. Pendley	5 (12)	3 (5)	2 (2)	- (1)	10 (20)
L. Wodach	7 (9)	1 (2)	1 (2)	- (1)	9 (14)
S. Romero	7 (7)	2 (2)	-	-	9 (9)
M. Hatfield	2 (4)	- (2)	- (1)	-	2 (7)
K. Arnold	1 (3)	- (2)	-	-	1 (5)
P. Parker	- (9)	- (3)	- (1)	-	- (13)

2016 SCORE BY INNING

	1	2	3	4	5	6	7	8+	Total
Oklahoma	74	82	67	42	71	56	34	9	435
Opponents	11	10	33	26	24	16	27	8	155

2016 TEAM SINGLE GAME HIGHS

Hitting

At bats.....40 vs. Minnesota (3/16)
 Runs scored.....12, 3x, MR: at Iowa State (5/1)
 Hits.....18 vs. UCLA (2/27)
 RBI.....12 vs. Western Michigan (2/20)
 Doubles.....4, 4x, MR vs. Texas Tech (5/7)
 Triples.....1, 13x, MR: vs. LSU (6/5)
 Home runs.....4 vs. Dartmouth (G1) (3/5)
 Total bases.....27 vs. UCLA (2/27)
 Walks.....8, 4x, MR: at Iowa State (5/1)
 Strikeouts.....14 vs. Minnesota (2/12)
 Sacrifice hits.....4 vs. Auburn (6/7)
 Sacrifice flies.....2, 2x, MR: at Iowa State (5/1)
 Stolen bases.....5, 3x, MR: vs. Michigan (6/4)
 Hit by pitch.....3, 2x, MR: vs. Ole Miss (5/21)
 Runners LOB.....13 at Tulsa (5/4)

Fielding

Putouts.....24, 3x, MR: vs. Alabama (6/2)
 Assists.....14 at Iowa State (5/1)
 Errors.....2, 3x, MR: vs. Auburn (6/7)
 Passed balls.....2 at Iowa State (G2) (4/29)
 Double Plays Turned.....2, 2x, MR: vs. LSU (6/5)

Pitching

Innings pitched.....8.0, 3x, MR: vs. Alabama (6/2)
 Runs allowed.....16 vs. Michigan (2/26)
 Earned runs.....15 vs. Michigan (2/25)
 Walks allowed.....8 vs. UCLA (2/27)
 Strikeouts.....14 vs. Minnesota (3/16)
 Hits allowed.....13, 3x, MR: vs. Auburn (6/7)
 Doubles allowed.....5 vs. Oregon State (2/25)
 Triples Allowed.....1, 6x, MR: vs. Auburn (6/7)
 Homers allowed.....4, 2x, MR: vs. Minnesota (3/16)
 Wild pitches.....2, 7x, MR: at Auburn (6/7)
 Hit batters.....3, 2x, MR: vs. Kansas (4/2)

2016 INDIVIDUAL SINGLE GAME HIGHS

Hitting

Runs scored.....4, Erin Miller vs. Texas (G1) (4/15)
 Hits.....4, 2x, MR: Lea Wodach vs. Minnesota (3/16)
 RBI.....6, Fale Aviu vs. Maryland (3/12)
 Doubles.....2, 4x, MR: Kady Self vs. Texas Tech (5/8)
 Triples.....1, 13x, MR: Nicole Pendley vs. LSU (6/5)
 Home runs.....2, 4x, MR: Fale Aviu vs. Maryland (3/12)
 Total bases.....10, Lea Wodach vs. Oregon State (2/25)
 Walks.....3, Caleigh Clifton at Iowa State (5/1)
 Sacrifice Hits.....2, Kelsey Arnold vs. BYU (3/12)
 Sacrifice Flies...1, 14x, MR: Kelsey Arnold vs. Ole Miss (5/22)
 Stolen Bases.....3, Kelsey Arnold vs. Maryland (3/12)
 Hit by pitch.....2, Caleigh Clifton vs. Kansas (4/3)

Fielding

Putouts.....14, Shay Knighten vs. Texas (G2) (4/15)
 Assists.....6, 2x, MR: Kelsey Arnold at Iowa State (5/1)
 Errors.....2, Shay Knighten at Cal State Fullerton (3/18)
 Passed balls.....2, Lea Wodach at Iowa State (G1) (4/29)

Pitching

Innings pitched....8.0, 2x, MR: Paige Parker vs. Alabama (6/2)
 Runs allowed.....12, Kelsey Stevens vs. Michigan (2/26)
 Earned runs.....11, Kelsey Stevens vs. Michigan (2/26)
 Walks allowed.....6, Jayden Chestnut vs. UCLA (2/27)
 Strikeouts.....12, 2x, MR: Jayden Chestnut vs. Lipscomb (4/24)
 Hits Allowed.....12, Paige Parker vs. Michigan (6/4)
 Doubles allowed.....5, Paige Parker vs. Oregon State (2/25)
 Triples allowed.....1, 6x, MR: Kelsey Stevens vs. Auburn (6/7)
 Homers allowed....3, 2x, MR: Paige Parker vs. Minnesota (3/16)
 Wild pitches.....2, 5x, MR: Paige Parker at Arkansas (4/20)
 Hit batters.....3, Kelsey Stevens vs. Minnesota (3/16)

► Dalton and the other invitees were chosen by the Women's National Team Selection Committee after a two-day selection process. They will take part in a training camp and exhibition games in Oklahoma City this June and July. The 24-player roster will then be trimmed to 17 and that squad will compete in the World Baseball Softball Confederation Junior Women's World Championship in Clearwater, Fla., July 24-30.

THREE EXPERIMENTAL RULES ADDED FOR 2017

► Three new experimental rule changes have been approved for the 2017 softball season. All three are aimed at speeding up the pace of play and will be used only during league games by the five Autonomy Conferences (ACC, Big 12, Big Ten, Pac-12 and SEC).

► The first rule will limit teams to six conferences per game, regardless of if they come on offense or defense. If the game reaches extra innings, one conference will be allowed for each additional inning, though conferences not used in regulation will not be carried over. Previously, teams were allowed one offensive and one defensive conference per half inning.

► The second rule says that, after an out, teams can throw the ball around the infield, but the ball must then be thrown directly to the pitcher and teams may not huddle. A huddle is defined as "more than one player meeting together on the field." The previous rule allowed the teams to huddle after an out. A warning will be given for the first discretion, while each subsequent infraction will result in a ball being awarded to the next batter. Teams will be given one warning per game.

► The last rule says that teams will be allowed 90 seconds between innings. At that time, the defensive team must be in position to start with the pitcher ready in the circle and the batter needs to be ready at the plate. The 90 seconds starts when the last defensive player crosses the foul line closest to her dugout, and time will be kept by the third-base umpire in a three-person crew or the base umpire in a two-person crew. Like with the no huddle defense, a defensive team that is not ready after 90 seconds will result in the next batter being awarded a ball. Conversely, if the batter is not ready then she will be given a strike. Teams can use one of their six conferences to avoid the penalty. Prior to this rule, there was no time limit between innings, though pitchers were limited to five warm-up throws between innings.

OU TO HAVE EXTENDED TV/RADIO COVERAGE IN 2017

► Oklahoma is scheduled to have 21 of its games televised during the 2017 season. The Sooners will appear on the ESPN family of networks eight times, while Sooner Sports TV is scheduled to carry an additional 13 contests.

► In addition, every single contest will be carried live on the radio on KEBC 1560 AM in the Norman area. A link will also be available online on SoonerSports.com. Chris Plank returns for his second year as the voice of OU softball

SENIOR CLASS AMONG THE NATION'S BEST

► The 2017 campaign marks the final season for senior Macey Hatfield. Over the last 3 years, Oklahoma ranks fourth in win percentage and wins entering 2017.

Best Winning Percentage Since 2014

Team	Win Pct.	Wins	Losses	Ties
1. Florida	.868	171	26	0
2. Oregon	.850	155	27	1
3. Michigan	.841	159	30	0
4. Oklahoma	.840	157	30	0
5. Florida State	.828	159	33	0

Most Wins Since 2014

Team	Wins	Losses	Ties	Win Pct.
1. Florida	171	26	0	.868
2. Michigan	159	30	0	.841
Florida State	159	33	0	.828
4. Oklahoma	157	30	0	.840
5. Auburn	156	42	1	.786

NOTES ON 2016

► Oklahoma joined UCLA and Arizona as the only teams in NCAA DI history to win at least three national championships.

► The Sooners reached the Women's College World Series for the 10th time in history and fifth time in the last six years, the Super Regionals for the seventh straight season and 10th time overall and the postseason in each of the last 23 seasons, including all 22 under head coach Patty Gasso.

► OU had the longest winning streak in program history (31 games from April 2 to June 7); it tied for the 17th longest in NCAA history.

► Oklahoma's 631 hits were 16th most in NCAA history.

► OU broke a school and Big 12 record with a fielding percentage of .983 and committed the fewest errors ever at OU (28); the fielding percentage was sixth best in NCAA history.

► For the fourth time in the last five seasons Oklahoma had at least three All-Americans in first-teamer Paige Parker and second-teamers Erin Miller and Shay Knighten.

► OU tied a school record with eight All-Region honorees for the third straight season.

► Oklahoma swept every major Big 12 award, including Player of the Year, Pitcher of the Year, Freshman of the Year, Coach of the Year and Defensive Player of the Year.

OKLAHOMA BIG 12 TITLE RUN REACHES FIVE

► Oklahoma has won an unprecedented five straight Big 12 championships. Prior to this current run, no team in league history had even won three straight conference crowns.

► Oklahoma has won nine Big 12 regular season titles and four conference tournament championships. The 13 combined championships are the most in league history.

Team	Regular Season	Tournament*	Total
1. Oklahoma	9	4	13
2. Texas	4	4	8
3. Nebraska	3	3	6
4. Missouri	2	2	4
5. Texas A&M	2	1	3
6. Baylor	1	0	1
Kansas	0	1	1

* - The Big 12 Tournament ended in 2010 but will return in 2017.

2016 BIG 12 STANDINGS

School	Conference						Overall					
	Record	Pct.	Home	Away	Neutral	Streak	Record	Pct.	Home	Away	Neutral	Streak
Oklahoma	17-1	.944	9-1	7-0	1-0	Won 15	57-8	.877	24-2	12-1	21-5	Won 1
Baylor	13-4	.765	5-3	8-1	0-0	Won 8	45-14	.763	18-8	14-4	13-2	Lost 1
Texas	10-7	.588	5-1	5-6	0-0	Won 4	38-16	.704	22-4	9-9	7-3	Lost 2
Kansas	8-9	.471	7-4	1-5	0-0	Won 3	31-20	.608	18-7	3-7	10-6	Won 3
Oklahoma State	6-11	.353	4-3	2-7	0-1	Lost 2	32-26	.552	16-4	9-12	7-10	Lost 1
Texas Tech	6-12	.333	5-4	1-8	0-0	Lost 6	23-32	.418	13-8	5-18	5-6	Lost 6
Iowa State	1-17	.056	0-9	1-8	0-0	Lost 11	20-35	.364	11-12	2-17	7-6	Lost 6

CAREER OU RECORD WATCH

Innings Pitched

1.	1074.1	Keilani Ricketts	'10-13
2.	928.2	Jennifer Stewart	'99-02
3.	910.1	Kami Keiter	'02-05
4.	807.1	Patti Graham	'81-84
5.	752.1	Cheryl Jacobs	'78-80
6.	671.2	Jill Most	'94-97
7.	637.0	D.J. Mathis	'06-09
8.	621.1	Lana Moran	'97-00
9.	557.2	Christine Haag	'90-93
10.	469.1	Paige Parker	'15-

Wins

1.	133	Keilani Ricketts	'10-13
2.	115	Jennifer Stewart	'99-02
3.	101	Kami Keiter	'02-05
4.	76	Jill Most	'94-97
	76	DJ Mathis	'06-09
6.	67	Lana Moran	'97-00
7.	66	Paige Parker	'15-

Strikeouts

1.	1605	Keilani Ricketts	'10-13
2.	805	Jill Most	'94-97
3.	733	Kami Keiter	'02-05
4.	634	Jennifer Stewart	'99-02
5.	597	D.J. Mathis	'06-09
6.	528	Michelle Gascoigne	'10-13
7.	493	Paige Parker	'15-

Strikeouts Per 7 IP (min. 150 IP)

1.	10.46	Keilani Ricketts	'10-13
2.	9.46	Michelle Gascoigne	'10-13
3.	8.39	Jill Most	'94-97
4.	7.44	Kelsey Stevens	'14-16
5.	7.35	Paige Parker	'15-

Opponent Batting Average (min. 150 IP)

1.	.147	Kerri Mulry	'86
2.	.162	Keilani Ricketts	'10-13
3.	.168	Cheryl Jacobs	'79-80
4.	.169	Jill Most	'94-97
5.	.173	Patti Krafft	'82-85
6.	.175	Brea Moore	'94-95
7.	.183	Paige Parker	'15-

Shutouts

1.	54	Keilani Ricketts	'10-13
2.	35	Jennifer Stewart	'99-02
3.	34	Patti Graham	'81-84
	34	Kami Keiter	'02-05
5.	33	Cheryl Jacobs	'78-80
6.	32	Jill Most	'94-97
7.	26	Lana Moran	'97-00
8.	25	D.J. Mathis	'06-09
9.	23	Paige Parker	'15-

Complete Games

1.	123	Keilani Ricketts	'10-13
2.	101	Patti Graham	'81-84
3.	91	Jennifer Stewart	'99-02
4.	90	Kami Keiter	'02-05
5.	87	Cheryl Jacobs	'78-80
6.	69	Jill Most	'94-97
7.	67	Lana Moran	'97-00
8.	63	Christine Haag	'90-93
9.	55	Paige Parker	'15-

THE LAST TIME OKLAHOMA...

Scored 10+ runs in a game.....	10 vs. Texas Tech (5/8/16)
Scored 15+ runs in a game.....	16 vs. Iowa State (G2) (4/4/15)
Scored 20+ runs in a game.....	21 at Texas Tech (3/29/15)
Recorded 15+ hits in a game.....	15 vs. DePaul (3/18/16)
Recorded 20+ hits in a game.....	22 vs. East Carolina (3/15/15)
Scored 10+ runs in an inning.....	10 (4th) vs. Iowa State (G2) (4/4/15)
Drew 10 or more walks in a game.....	13 at Kansas (4/25/15)
Stole five or more bases in a game.....	5 vs. Michigan (6/4/16)
Hit five or more home runs in game.....	5 vs. Utah Valley (5/3/15)
Hit two or more grand slams in a game.....	2 vs. Boise State (2/20/14)
Defeated No. 1 team (NFCA).....	6-1 at #1 Washington (5/27/10)
Defeated ranked opponent at home.....	7-6 vs. #9 Louisiana-Lafayette (5/27/16)
Defeated ranked opponent on the road.....	9-0 at #12 Tennessee (4/23/16)
Defeated ranked opponent at a neutral site.....	2-1 vs. #5 Auburn (6/8/16)
Lost to ranked opponent at home.....	10-12 (8) vs. Minnesota (3/16/16)
Lost to ranked opponent on the road.....	3-5 at #6 Alabama (G2) (5/23/15)
Lost to ranked opponent at a neutral site.....	7-11 (8) vs. #5 Auburn (6/7/16)
Lost to unranked opponent at home.....	2-5 vs. Kansas (4/2/16)
Lost to unranked opponent on the road.....	7-5 at Cal State Fullerton (3/18/16)
Lost to unranked opponent at a neutral site.....	6-4 vs. Oregon State (2/25/16)
Won a run-rule game.....	9-1 (5) vs. Ole Miss (5/21/16)
Lost a run-rule game.....	0-8 (6) vs. #17 Baylor (4/18/15)
Won an extra-inning game.....	3-0 (8) vs. #6 Alabama (6/2/16)
Lost an extra-inning game.....	10-12 (8) vs. Minnesota (3/16/16)
Was No-Hit.....	7-0 vs. North Carolina State (3/16/07)
Turned a triple play.....	5-4-3 vs. Loyola Marymount (2/8/14)

THE LAST TIME AN OU PLAYER...

Recorded 4+ hits in a game.....	4, Lea Wodach vs. Minnesota (3/16/16)
Scored 4+ runs in a game.....	4, Erin Miller vs. Texas (G1) (4/15/16)
Drove in 5+ runs in a game.....	6, Fale Aviu vs. Maryland (3/12/16)
Hit 2+ home runs in a game.....	2, Fale Aviu vs. Maryland (3/12/16)
Hit a grand slam.....	Nicole Pendley vs. Wichita State (5/20/16)
Hit back-to-back home runs.....	Sydney Romero and Nicole Pendley at Oklahoma State (5/13/16)
Hit back-to-back-to-back home runs.....	Jessica Shults, Keilani Ricketts and Shelby Pendley vs. Stanford (2/8/13)
Hit for the cycle.....	Never happened
Drew 4+ walks in a game.....	4, Lauren Chamberlain at Kansas (4/26/15)
Stole 3+ bases in a game.....	3, Kelsey Arnold vs. Maryland (3/12/16)
Had a walk-off home run.....	Shay Knighten (three-run home run, 8th inning) vs. Alabama (6/2/16)
Had a walk-off hit.....	Shay Knighten (three-run home run, 8th inning) vs. Alabama (6/2/16)

THE LAST TIME AN OU PITCHER...

Struck out 15+ batters.....	17, Keilani Ricketts at Kansas (5/5/13)
Struck out 10+ batters.....	12, Jayden Chestnut vs. Lipscomb (4/24/16)
Threw a no-hitter.....	Paige Parker vs. BYU (3/11/16)
Threw a perfect game.....	Paige Parker vs. Utah Valley (5/3/15)

Saves

1.	9	Kami Keiter	'02-05
2.	8	Keilani Ricketts	'10-13
3.	6	Lana Moran	'97-00
4.	5	Jill Most	'94-97
	5	Jennifer Stewart	'99-02
6.	4	Dayna Garcia	'92-93
	4	DJ Mathis	'06-09
	4	Shelby Pendley	'13-15
9.	3	Brea Moore	'94-95
	3	Nicole Denes	'03-06
	3	Kirsten Allen	'09-12
	3	Michelle Gascoigne	'10-13
3	Paige Parker	'15-	

Winning Percentage

1.	.879	Michelle Gascoigne (51-7)	'10-13
2.	.869	Paige Parker (66-10)	'15-

OKLAHOMA SOFTBALL CAREER HOME RUNS

(EI) extra-inning home run | (GS) grand slam | (IP) inside the park home run | (LO) leadoff home run | (PH) pinch-hit home run | (WO) walk-off home run | Bold = multi-HR game

KELSEY ARNOLD

No.	Opponent	Date	RBI
3	UTAH VALLEY	5/3/15	1
2	NORTH TEXAS	4/20/15	2
1	at Texas Tech	3/28/15	1

FALE AVIU

No.	Opponent	Date	RBI
8	at Iowa State (Game 2)	4/29/16	3
7	at Arkansas	4/20/16	2
6	UMKC	3/25/15 (WO, GS)	4
5	MARYLAND	3/12/16	(WO) 2
4	MARYLAND	3/12/16	3
3	DARTMOUTH (GAME 1)	3/5/16	2
2	DARTMOUTH (GAME 1)	3/5/16	2
1	vs. Creighton	2/19/16	1

CALEIGH CLIFTON

No.	Opponent	Date	RBI
5	LOUISIANA-LAFAYETTE	5/26/16	2
4	TEXAS TECH	5/8/16	2
3	at Iowa State	5/1/16	1
2	at Iowa State	4/29/16	2
1	KANSAS	4/1/16 (WO, GS)	4

MACEY HATFIELD

No.	Opponent	Date	RBI
6 (2)	WICHITA STATE	4/6/16 (PH)	1
5 (1)	vs. Long Beach State	2/14/16 (PH)	1
4 (3)	East Carolina	3/15/15	2
3 (2)	SAMFORD	3/8/15 (PH, GS)	4
2 (1)	vs. St. Mary's	2/6/15 (PH)	1
1	at Iowa State	3/30/14	3

SHAY KNIGHTEN

No.	Opponent	Date	RBI
13	vs. LSU	6/5/16	1
12	vs. Alabama	6/2/16 (WO)	3
11	TEXAS TECH	5/7/16	2
10	at Iowa State	5/1/16	3
9	TEXAS (GAME 1)	4/15/16	3
8	WICHITA STATE	4/6/16	2
7	vs. Oklahoma State	3/30/16	2
6	vs. Alabama	3/19/16 (WO)	2
5	DARTMOUTH (GAME 2)	3/5/16	2
4	vs. Michigan	2/26/16	1
3	vs. Michigan	2/26/16	3
2	vs. Western Michigan	2/20/16	1
1	at New Mexico State	2/19/16	2

PAIGE PARKER

No.	Opponent	Date	RBI
11 (1)	MINNESOTA	3/16/16	1
10	CENTRAL ARKANSAS	3/31/15	3
9	vs. McNeese State	3/22/15	2
8	IOWA	3/16/15	1
7	IOWA	3/15/15	1
6	IOWA	3/15/15	2
5	EAST CAROLINA	3/15/15	2
4	EAST CAROLINA	3/14/15	1
3	MISSOURI STATE	3/7/15	1
2	vs. Kentucky	2/21/15	2
1	vs. Georgia	2/20/15	2

NICOLE PENDLEY

No.	Opponent	Date	RBI
15 (8)	vs. Michigan	6/4/16	1
14 (7)	OLE MISS	5/21/16	1
13 (6)	WICHITA STATE	5/20/16 (GS)	4
12 (5)	at Oklahoma State	5/13/16	1
11 (4)	at Tennessee	4/23/16	3
10 (3)	at Baylor	4/10/16	3
9 (2)	vs. UMKC	3/26/16	3
8 (1)	vs. Michigan	2/26/16	1
7	UTAH VALLEY	5/3/15	2
6	at Texas Tech	3/28/15	2
5	IOWA	3/14/15	1
4	MISSOURI STATE	3/8/15	2
3	vs. Arizona	2/19/15	2
2	at Hawaii	2/7/15	2
1	at Hawaii	2/7/15	3

SYDNEY ROMERO

No.	Opponent	Date	RBI
10	vs. Auburn	6/6/16	3
9	vs. Michigan	6/4/16	1
8	LOUISIANA-LAFAYETTE	5/27/16	1
7	LOUISIANA-LAFAYETTE	5/26/16	1
6	at Oklahoma State	5/13/16	3
5	at Baylor	4/8/16	1
4	UMKC	3/25/16	1
3	MINNESOTA	3/16/16	2
2	vs. UCLA	2/27/16	2
1	vs. Utah	2/26/16 (LO)	1

LEA WODACH

No.	Opponent	Date	RBI
12 (7)	TEXAS TECH	5/7/16	2
11 (6)	SAINT LOUIS	3/11/16	1
10 (5)	DARTMOUTH (GAME 1)	3/5/16	2
9 (4)	vs. UCLA	2/27/16	1
8 (3)	vs. Oregon State	2/25/16	(IP) 1
7 (2)	vs. Oregon State	2/25/16	1
6 (1)	at New Mexico State	2/20/16	1
5	CENTRAL ARKANSAS	5/15/15 (GS)	4
4	CENTRAL ARKANSAS	3/31/15	3
3	CENTRAL ARKANSAS	3/31/15	2
2	MISSOURI STATE	3/8/15	3
1	at Hawaii	2/8/15 (PH)	1



OKLAHOMA HEAD COACH PATTY GASSO

THE GASSO FILE

Personal

Hometown.....Torrance, Calif.
 High School.....Bishop Montgomery College
 College.....Long Beach State, 1984
 Family.....Husband, Jim Sons, J.T. and D.J.

Coaching History

Oklahoma.....1995-present
 Record.....1,085-313-2 (.776)

Long Beach City College.....1991-94
 Record.....161-59-1 (.731)

Career Record.....1,246-372-3 (.770)

CAREER COACHING ACCOLADES

- 2012 NFCA Hall of Fame Inductee
- NFCA 1000-Wins Club
- 2016 Big 12 Coach of the Year
- 2015 Big 12 Coach of the Year
- 2014 Big 12 Coach of the Year
- 2013 Big 12 Coach of the Year
- 2012 Big 12 Coach of the Year
- 2009 Big 12 Coach of the Year
- 2000 Big 12 Coach of the Year
- 1999 Big 12 Coach of the Year
- 1996 Big 12 Coach of the Year
- 2013 NFCA Coaching Staff of the Year
- 2000 NFCA Coaching Staff of the Year
- 2015 NFCA Regional Coaching Staff of the Year
- 2014 NFCA Regional Coaching Staff of the Year
- 2013 NFCA Regional Coaching Staff of the Year
- 2012 NFCA Regional Coaching Staff of the Year
- 2004 NFCA Regional Coaching Staff of the Year
- 2001 NFCA Regional Coaching Staff of the Year
- 2000 NFCA Regional Coaching Staff of the Year
- 1999 NFCA Regional Coaching Staff of the Year
- 1996 NFCA Regional Coaching Staff of the Year
- 2013 Long Beach St. University Hall of Fame Inductee
- 2004 Long Beach City Hall of Champions Inductee

OKLAHOMA THEN AND NOW

The years before and after Patty Gasso's arrival

	Before (1975-94)	Since (1995-16)
Overall Record	562-450	1085-313-2
National Titles	0	3
Conference Titles	0	9
Postseason Conference Titles	0	4
Women's College World Series	0	10
NCAA Championship Appearances	1	22
All-America Selections	1	53
All-Conference Selections	60	144
Academic All-Conference	28	115
Years Among Final Top 25	0	22
Years Among Final Top 10	0	13
Finish in Top 2 of Conference	0	17

Now in her 23rd season at the University of Oklahoma, head coach Patty Gasso has molded the OU softball program into a national power and permanently placed herself among the elite college softball coaches in the country as evident by her selection to the 2012 NFCA Hall of Fame class.

Oklahoma is one of just three programs in NCAA history to win three national titles, doing so in 2000, 2013 and most recently in 2016. She's reached the Women's College World Series 10 times during her tenure, and in the process, advanced to the postseason in each one of her previous 22 seasons.

With 26 seasons as a head coach to her name, Gasso has a career collegiate coaching record of 1246-372-3 (.770) and holds an overall record of 1085-313-2 (.776) at the University of Oklahoma. Needing only 1,300 games to get there, Gasso became the second fastest to reach 1,000 wins in NCAA Division I history during the 2015 season. She has won more Big 12 games (290-84) than any coach in the league's history and has twice as many wins as any other coach in OU history. Gasso's Sooner teams have finished second or higher 17 different times since the inception of the Big 12 in 1996. They have won over 77 percent of their Big 12 contests, and OU has claimed nine Big 12 regular season and four championship titles under her direction.

Numerous Sooner players have prospered under Gasso's tutelage and garnered national, regional and conference recognition. Keilani Ricketts was the two-time USA Softball National Player of the Year in 2012 and 2013, becoming just the third player in history to win more than once. Gasso has also directed 53 All-Americans, 118 All-Region honorees and 144 all-conference selections. In the Big 12 era, nine Sooners have been named Big 12 Player of the Year a total of 11 times, five have been selected as Big 12 Freshman of the Year, three as Big 12 Pitcher of the Year four times and one as Big 12 Newcomer. In 2010, Amber Flores became the first player in league history to earn Player of the Year honors twice, while Shelby Pendley joined her in winning the award twice in 2013 and 2015.

The OU softball success under Gasso has also spilled over into the classroom where the Sooners have been honored with 115 academic all-conference honors, including a program-record nine in 2016. Nine of those have gone on to become Academic All-Americans, including Lana Moran, the 2000 Academic All-American of the Year.

Gasso and her staff have consistently been recognized for their efforts on and off the field. The staff was awarded three consecutive Speedline/NFCA Midwest Region Coaching Staff of the Year awards from 1999-2001 and received the national honor in 2000 and 2013. Gasso and staff have claimed the regional honor nine times total, with the most recent award coming in 2015. In addition, Gasso has been named the Big 12 Coach of the Year a record nine times: 1996, 1999, 2000, 2009, 2012, 2013, 2014, 2015 and 2016.

NCAA WINNINGEST COACHES OF ALL-TIME

Div. I Active Coaches, By % minimum five years

1. Michael Lotief, ULL .802
2. Clint Myers, Auburn .802
3. Mike Candrea, Arizona .794
4. Tim Walton, Florida .792
5. Mike White, Oregon .779
6. Patrick Murphy, Alabama .779
7. **PATTY GASSO, OU .776**
8. Carol Hutchins, Michigan .756
9. Kelly Inouye-Perez, UCLA .752
10. Ralph Weekly, Tennessee .752

* - Active

Div. I All-Time, By % minimum 10 years

1. Sue Enquist, UCLA .835
2. Sharron Backus, UCLA .831
3. Stefni Lotief, ULL .806
4. Michael Lotief, ULL* .802
5. Clint Myers, Auburn* .802
6. Mike Candrea, Arizona* .794
7. Tim Walton, Florida* .792
8. Patrick Murphy, Alabama* .779
9. **PATTY GASSO, OU* .776**
10. Carol Hutchins, Michigan* .756

Div. I Active Coaches, By Wins minimum five years

1. Carol Hutchins, Michigan 1,484
2. Mike Candrea, Arizona 1,468
3. Eugene Lenti, DePaul 1,263
4. Ralph Weekly, Tennessee 1,254
5. Diane Ninemire, Cal 1,250
6. Margo Jonker, CMU 1,187
7. Donna Papa, UNC 1,187
8. Jo Evans, Texas A&M 1,101
9. **PATTY GASSO, OU 1,085**
10. Bob Brock, Sam Houston 1,078

Div. I All-Time, By Wins minimum 10 years

1. Carol Hutchins, Michigan* 1,484
2. Mike Candrea, Arizona* 1,468
3. Margie Wright, Fresno St. 1,457
4. Yvette Girouard, LSU 1,285
5. Eugene Lenti, DePaul* 1,263
6. Ralph Weekly, Tenn.* 1,255
7. Diane Ninemire, Cal* 1,250
8. Gayle Blevins, Iowa 1,245
9. Margo Jonker, CMU* 1,187
10. Donna Papa, UNC* 1,187
11. JoAnne Graf, Fla. State 1,186
12. Elaine Sortino, UMass 1,185
13. Jo Evans, Texas A&M* 1,101
14. **PATTY GASSO, OU* 1,085**

GASSO'S YEAR-BY-YEAR AT OKLAHOMA

Year	Overall	Pct.	Big 12	Pct.	Place	Big 12 Tourney	Postseason
1995	43-23	.652	—	—	—	—	NCAA Regional Final
1996	50-20	.714	17-5	.773	1st*	Champs*	NCAA Regional Final
1997	55-19	.743	14-4	.778	2nd	Semis	NCAA Regional (third)
1998	49-15	.766	12-5	.706	2nd	Runner-Up	NCAA Regional Final
1999	40-16	.714	11-3	.786	1st*	Quarters	NCAA Regional Final
2000	66-8	.892	17-1	.945	1st*	Semis	NCAA Regional Champions, WCWS National Champions
2001	50-9	.848	14-2	.875	2nd	Champs*	NCAA Regional Champions, WCWS
2002	49-16	.753	14-2	.875	2nd	Semis	NCAA Regional Champions, WCWS
2003	47-14	.770	12-6	.666	4th	Runner-Up	NCAA Regional Champions, WCWS
2004	45-22-1	.669	11-7	.611	5th	Semis	NCAA Regional Champions, WCWS
2005	50-17	.746	12-6	.666	2nd	Semis	NCAA Regional 14 Champions, NCAA Super Regional
2006	40-21-1	.653	8-10	.444	5th	Runner-Up	NCAA Regional Final
2007	55-8	.873	14-4	.778	2nd	Champs*	NCAA Regional Champions, NCAA Super Regional
2008	47-14	.770	16-2	.889	2nd	Opening Rd.	NCAA Regional Champions, NCAA Super Regional
2009	41-16	.719	14-4	.778	1st*	Runner-Up	NCAA Regional
2010	47-12	.797	13-3	.813	2nd	Champs*	NCAA Regional Champions, NCAA Super Regional
2011	43-19	.694	10-8	.556	5th	—	NCAA Regional Champions, NCAA Super Regional Champions, WCWS
2012	54-10	.844	19-5	.792	1st*	—	NCAA Regional Champions, NCAA Super Regional Champions, WCWS
2013	57-4	.934	15-2	.882	1st*	—	NCAA Reg. Champions, NCAA SR Champions, WCWS National Champions
2014	51-13	.797	16-2	.889	1st*	—	NCAA Regional Champions, NCAA Super Regional Champions, WCWS
2015	49-9	.845	14-2	.875	1st*	—	NCAA Regional Champions, NCAA Super Regional
2016	57-8	.877	17-1	.944	1st*	—	NCAA Reg. Champions, NCAA SR Champions, WCWS National Champions
TOTALS	1085-313-2	.776	290-84	.775	9	4	22 NCAA Tournament Appearances, 10 Super Regionals 10 WCWS Appearances, 3 National Championships



3

Kelsey Arnold Tulsa, Okla. Holland Hall Prep

INF	L/R	5-2	JR
-----	-----	-----	----

Year	Avg	GP	GS	AB	R	H	2B	3B	HR	RBI	TB	SLG%	BB	HBP	SO	OB%	SF	SH	SB	ATT	PO	A	E	FLD%
2015	.314	58	57	105	27	33	4	1	3	21	48	.457	11	0	12	.379	0	5	5	10	66	74	2	.986
2016	.382	65	65	152	46	58	3	0	0	8	61	.401	7	3	13	.417	1	12	15	16	98	105	4	.981
2017	-	-	-	-	-	-	-	-	-	-	-	-	-	-	-	-	-	-	-	-	-	-	-	-
TOTAL	.354	123	122	257	73	91	7	1	3	29	109	.424	18	3	25	.401	1	17	20	26	164	179	6	.983

Career Honors

- ▶ Voted team captain for 2017 season
- ▶ 2015 and 2016 First Team All-Region
- ▶ 2016 Big 12 Defensive Player of the Year
- ▶ 2015 All-Big 12 Defensive Team
- ▶ 2015 All-Big 12 Freshman Team
- ▶ 2016 Academic All-Big 12 Second Team honoree

2016 (Sophomore)

- ▶ Started all 65 games at shortstop
- ▶ Led the team in sacrifice hits (12), stolen bases (15) and assists (105)
- ▶ Tied for fifth at OU all-time with a season stolen base pct. of .938 (15-16)
- ▶ Made the switch full-time to being a lefty slapper
- ▶ Tied career high with 3 hits, including a double, drove in a run and scored twice against Radford (4/23)
- ▶ Was 1-2 with a walk, stole a career-high 3 bases (most by a Sooner since 2009) and scored a career-high 3 runs against Maryland (3/12)
- ▶ Tied a career high in hits by going 3-4 with a double, RBI and scored in game two of a DH against Dartmouth (3/5)
- ▶ Matched career high with 3 hits, stole a base and drove in season-best 2 runs vs. No. 11 UCLA (2/27)

2015 (Freshman)

- ▶ Played in all 58 games with 57 starts (51 at 3B, 6 at 2B)
- ▶ Batted as lefty slapper for first 30 games, switched to right side beginning with Texas Tech series on March 27
- ▶ Posted a slash line (AVG/OBP/SLG) of .286/.333/.314 in 70 AB as a lefty and a line of .371/.463/.743 in 35 AB right-handed
- ▶ Led the team with 74 assists
- ▶ Hit the first home run of her career at Texas Tech (3/28)
- ▶ Posted a career-high in hits and RBI by going 3-4 with 3 RBI at Texas Tech (3/27)

High School

- ▶ Ranked 83rd on the Top 100 Players in the 2014 Class by StudentSports.com
- ▶ Named Holland Hall Most Valuable Player as a junior after hitting .813 with 30 runs scored, 26 hits, 19 RBI, 33 stolen bases and two home runs
- ▶ Also earned four letters in volleyball, and three in both basketball and track

Travel Ball

- ▶ Played for the Wichita Mustangs under head coach Mark Griggs

Personal

- ▶ Daughter of Darin and Tracy Arnold and has one brother, Darin Jr.
- ▶ Father, Darin, played football at Northeastern Oklahoma A&M and mother, Tracy, competed in track and field at Northeastern Oklahoma A&M
- ▶ Chose OU over Oklahoma State and Tulsa

Career Highs

R - 3 vs. Maryland, 3/12/16
 H - 3, 4x, MR vs. Radford, 4/23/16
 2B - 1, 7x, MR vs. Radford, 4/23/16
 3B - 1 vs. McNeese State, 3/22/15
 HR - 1, 3x, MR vs. Utah Valley, 5/3/15
 RBI - 3, 2x, MR at Texas Tech, 3/29/15
 BB - 2, 2x, MR at North Texas, 4/30/15
 SB - 3 vs. Maryland, 3/12/16
 HBP - 1, 3x, MR vs. LSU, 6/5/16
 HITTING STREAK - 9, 2/20/16-3/11/16

Season Highs

R - N/A
 H - N/A
 2B - N/A
 3B - N/A
 HR - N/A
 RBI - N/A
 BB - N/A
 SB - N/A
 HBP - N/A
 HITTING STREAK - N/A

2016 Oklahoma Softball
Individual Game-by-Game for Oklahoma (as of Jun 10, 2016)

#3 Arnold, Kelsey - 65 games (All games)

Date	Opponent	Pos	AB	R	H	RBI	2B	3B	HR	BB	SB	CS	HBP	SAC	SF	GDP	K	PO	A	E	Aug
Feb 12	vs Minnesota	ss	0	0	0	0	0	0	0	0	0	0	0	0	0	0	0	0	0	0	0.000
Feb 12	vs Washington	ss	3	1	2	0	0	0	0	0	0	0	0	0	0	0	0	0	0	0	0.667
Feb 13	vs Lamar	ss	1	1	0	0	0	0	1	0	0	0	0	0	0	0	0	0	0	0	0.500
Feb 13	vs Syracuse	ss	2	0	0	0	0	0	0	0	0	0	0	0	0	0	0	0	0	0	0.333
Feb 14	vs Long Beach State	ss	2	0	1	0	0	0	1	0	0	0	0	0	0	0	0	0	0	0	0.375
Feb 19	vs Creighton	ss	3	2	1	0	0	0	0	0	0	0	0	0	0	0	0	0	0	0	0.364
Feb 19	at New Mexico State	ss	3	0	2	1	0	0	0	0	0	0	0	0	0	0	0	0	0	0	0.429
Feb 20	vs Western Michigan	ss	2	1	0	0	0	0	0	0	0	0	0	0	0	0	0	0	0	0	0.375
Feb 20	at New Mexico State	ss	1	1	1	0	0	0	0	0	0	0	0	0	0	0	0	0	0	0	0.417
Feb 25	vs Oregon State	dh/ss	2	0	2	0	1	0	0	0	0	0	1	0	0	0	0	0	0	0	0.474
Feb 25	vs Utah	ss	3	0	1	0	0	0	0	0	0	0	1	0	0	0	0	0	0	0	0.455
Feb 26	vs Michigan	ss	4	1	2	0	0	0	0	2	0	0	0	0	0	0	0	0	0	0	0.462
Feb 26	vs Fresno State	ss	3	1	2	0	0	0	0	0	0	0	0	0	0	0	0	0	0	0	0.483
Feb 27	vs UCLA	ss	4	1	3	2	0	0	0	1	0	0	0	0	0	0	0	0	0	0	0.515
Mar 05	DARTMOUTH-1	ss	3	1	1	0	0	0	0	1	0	0	0	0	0	0	0	0	0	0	0.500
Mar 05	DARTMOUTH-2	ss	4	1	3	1	1	0	0	0	0	0	0	0	0	0	0	0	0	0	0.525
Mar 11	SAINT LOUIS	ss	4	2	2	0	0	0	0	0	0	0	0	0	0	0	0	0	0	0	0.523
Mar 11	BYU	ss	3	0	0	0	0	0	0	0	0	0	0	0	0	0	0	0	0	0	0.489
Mar 12	MARYLAND	ss	2	3	1	0	0	0	0	0	0	0	0	0	0	0	0	0	0	0	0.499
Mar 13	MARYLAND	ss	2	3	1	0	0	0	1	3	0	0	0	0	0	0	0	0	0	0	0.480
Mar 16	MINNESOTA	ss	4	2	1	0	0	0	0	0	0	0	0	0	0	0	0	0	0	0	0.456
Mar 18	vs DelPaul	ss	4	2	2	0	0	0	0	0	0	0	0	0	0	0	0	0	0	0	0.440
Mar 18	at Cal State Fullerton	ss	2	0	0	0	0	0	0	0	0	0	0	0	0	0	0	0	0	0	0.444
Mar 19	vs Grand Canyon	ss	3	1	2	0	0	0	0	0	0	0	0	0	0	0	0	0	0	0	0.455
Mar 19	vs Alabama	ss	2	0	0	0	0	0	0	0	0	0	0	0	0	0	0	0	0	0	0.441
Mar 20	vs Nebraska	ss	2	0	0	0	0	0	0	0	0	0	0	0	0	0	0	0	0	0	0.429
Mar 25	UMKC	ss/pr	0	1	0	0	0	0	0	0	0	0	0	0	0	0	0	0	0	0	0.429
Mar 26	vs UMKC	ss	2	1	1	0	0	0	0	0	0	0	0	0	0	0	0	0	0	0	0.431
Mar 30	vs Oklahoma State	ss	3	2	2	0	0	0	0	0	0	0	0	0	0	0	0	0	0	0	0.440
Apr 01	KANSAS	ss	3	1	2	0	0	0	0	0	0	0	0	0	0	0	0	0	0	0	0.449
Apr 02	KANSAS	ss	2	0	0	0	0	0	0	0	0	0	0	0	0	0	0	0	0	0	0.438
Apr 03	KANSAS	ss	2	0	1	0	0	0	0	0	0	0	0	0	0	0	0	0	0	0	0.439
Apr 06	WICHITA STATE	ss	2	1	0	0	0	0	0	1	0	0	0	0	0	0	0	0	0	0	0.440
Apr 08	at Baylor	ss	3	0	0	0	0	0	0	0	0	0	0	0	0	0	0	0	0	0	0.425
Apr 09	at Baylor	ss/pr	2	1	0	0	0	0	0	0	0	0	0	0	0	0	0	0	0	0	0.416
Apr 10	at Baylor	ss	3	1	2	0	0	0	0	1	0	0	0	0	0	0	0	0	0	0	0.424
Apr 13	NORTH TEXAS	ss	2	1	0	0	0	0	0	0	0	0	0	0	0	0	0	0	0	0	0.415
Apr 15	TEXAS-1	ss	2	1	2	0	0	0	0	0	0	0	0	0	0	0	0	0	0	0	0.427
Apr 15	TEXAS-2	ss	1	1	0	0	0	0	0	1	0	0	0	0	0	0	0	0	0	0	0.423
Apr 16	TEXAS	ss	1	1	0	0	0	0	1	0	0	0	0	0	0	0	0	0	0	0	0.418
Apr 20	at Arkansas	ss	3	0	1	0	0	0	0	0	0	0	0	0	0	0	0	0	0	0	0.416
Apr 23	at Tennessee	ss	2	1	0	0	0	0	0	0	0	0	1	0	0	0	0	0	0	0	0.408
Apr 23	vs Radford	ss	3	2	3	1	1	0	0	0	0	0	0	0	0	0	0	0	0	0	0.425
Apr 24	vs Lipscomb	ss	3	0	1	0	0	0	0	0	0	0	0	0	0	0	0	0	0	0	0.422
Apr 29	at Iowa State	ss	1	0	0	0	0	0	0	0	0	0	1	1	0	0	0	0	0	0	0.418
Apr 29	at Iowa State	ss	3	0	0	0	0	0	0	0	0	0	0	0	0	0	0	0	0	0	0.407
May 01	at Iowa State	ss	3	1	0	0	0	0	0	0	0	0	0	0	0	0	0	0	0	0	0.397
May 04	at Tulsa	ss	3	1	1	0	0	0	0	1	0	0	0	0	0	0	0	0	0	0	0.395
May 06	TEXAS TECH	ss	1	0	0	0	0	0	0	0	0	0	1	0	0	0	0	0	0	0	0.392
May 07	TEXAS TECH	ss	2	0	0	0	0	0	0	0	0	0	0	0	0	0	0	0	0	0	0.395
May 08	TEXAS TECH	ss	2	0	0	0	0	0	0	0	0	0	0	0	0	0	0	0	0	0	0.379
May 13	at Oklahoma State	ss	2	0	1	0	0	0	0	0	0	0	0	0	0	0	0	0	0	0	0.381
May 14	OKLAHOMA STATE	ss	3	1	2	0	0	0	0	1	0	0	0	0	0	0	0	0	0	0	0.388
May 20	WICHITA STATE	ss	2	1	2	0	0	0	0	0	0	0	0	0	0	0	0	0	0	0	0.386
May 21	OLE MISS	ss	3	1	2	0	0	0	0	0	0	0	0	0	0	0	0	0	0	0	0.393
May 22	OLE MISS	ss	1	0	0	0	0	0	0	0	0	0	0	0	0	0	0	0	0	0	0.390
May 26	LOUISIANA-LAFAYET	ss	2	0	0	0	0	0	0	0	0	0	1	0	0	0	0	0	0	0	0.384
May 27	LOUISIANA-LAFAYET	ss	2	1	2	0	0	0	0	0	0	0	1	0	0	0	0	0	0	0	0.393
Jun 02	vs Alabama	ss	1	1	0	0	0	0	0	1	0	0	0	0	0	0	0	0	0	0	0.390
Jun 04	vs Michigan	ss	3	0	0	0	0	0	0	0	0	0	0	0	0	0	0	0	0	0	0.382
Jun 05	vs LSU	ss	2	1	2	0	0	0	0	0	0	0	1	0	0						



34

Fale Aviu
Oceanside, Calif.
Rancho Buena Vista HS

OF	L/R	5-4	SO
----	-----	-----	----

Year	Avg	GP	GS	AB	R	H	2B	3B	HR	RBI	TB	SLG%	BB	HBP	SO	OB%	SF	SH	SB	ATT	PO	A	E	FLD%
2016	.355	61	55	172	38	61	8	0	8	50	93	.541	12	6	10	.409	3	0	5	10	23	0	0	1.000
2017	-	-	-	-	-	-	-	-	-	-	-	-	-	-	-	-	-	-	-	-	-	-	-	-
TOTAL	.355	61	55	172	38	61	8	0	8	50	93	.541	12	6	10	.409	3	0	5	10	23	0	0	1.000

Career Honors

- ▶ 2016 Third Team All-Region selection
- ▶ 2016 All-Big 12 Second Team honoree
- ▶ Chosen to 2016 All-Big 12 Freshman Team

2016 (Freshman)

- ▶ Played in 61 games with 55 starts (31 at DP, 24 in RF)
- ▶ Led team with 3 sacrifice flies, tying for ninth in OU single-season history
- ▶ Was 2-3 with an RBI in game 3 of WCWS Championship Series vs. Auburn (6/8)
- ▶ Went 2-4 with a double and 3 RBI against Louisiana-Lafayette in the NCAA Super Regional (5/26)
- ▶ Set career high with 3 hits and drove in a run at Iowa State (5/1)
- ▶ Hit a walk-off grand slam against UMKC (3/25)
- ▶ Homered twice and drove in a career-high 6 runs against Maryland (3/12)
- ▶ Hit a pair of 2-run homers in game one of a DH against Dartmouth (3/5)
- ▶ Hit the first home run of her career and was 2-4 with 2 RBI vs. Creighton (2/19)

High School

- ▶ 2014 All-State Under Classman by CalHiSports
- ▶ Chosen as the 2013-14 San Diego Softball Athlete of the Year by the San Diego Union-Tribune
- ▶ Named to Principal's Academic Honor Roll (2011-14)

Travel Ball

- ▶ Spent four years playing for the OC Batbusters in Anaheim, Calif., under the direction of Mike Stith and Garry Haning
- ▶ Helped lead OC Batbusters to the 2014 PGF 18U Premier National Championship
- ▶ Was a member of Team Mizuno, which won the 2012 Premiers Girls Fast-Pitch 16U National Championship

Personal

- ▶ Daughter of William and Patricia Aviu and has one older brother, Kava, and younger twin siblings, sister Va'asaumamao and brother D'tron

Career Highs

R - 2, 8x, MR vs. Texas Tech, 5/8/16
 H - 3 at Iowa State, 5/1/16
 2B - 1, 8x, MR vs. Louisiana-Lafayette, 5/26/16
 3B - N/A
 HR - 2, 2x, MR vs. Maryland, 3/12/16
 RBI - 6 vs. Maryland, 3/12/16
 BB - 1, 12x, MR vs. LSU, 6/5/16
 SB - 1, 5x, MR vs. Auburn, 6/7/16
 HBP - 1, 6x, MR vs. Alabama, 6/2/16
 HITTING STREAK - 6, 5/6/16-5/20/16

Season Highs

R - N/A
 H - N/A
 2B - N/A
 3B - N/A
 HR - N/A
 RBI - N/A
 BB - N/A
 SB - N/A
 HBP - N/A
 HITTING STREAK - N/A

2016 Oklahoma Softball
Individual Game-by-Game for Oklahoma (as of Feb 01, 2017)

#34 Aviu, Fale - 61 games (All games)

Date	Opponent	Pos	AB	R	H	RBI	2B	3B	HR	BB	SB	CS	HBP	SAC	SF	GDP	K	PO	A	E	Avg
Feb 12	vs Minnesota	of	2	0	0	0	0	0	0	0	0	0	0	0	0	0	1	0	0	0	0.000
Feb 12	vs Washington	of	2	1	0	0	0	0	0	0	0	0	0	0	0	0	3	0	0	0	0.000
Feb 12	vs Washington	of	2	2	1	1	0	0	0	1	0	0	0	0	0	0	0	1	0	0	0.167
Feb 13	vs Syracuse	of	3	2	2	0	0	0	0	1	0	0	0	0	0	0	0	1	0	0	0.333
Feb 14	vs Long Beach State	of	3	0	0	0	0	0	0	1	0	1	0	0	0	0	1	2	0	0	0.250
Feb 19	vs Creighton	of	4	1	2	0	0	1	0	0	0	0	0	0	0	0	0	0	0	0	0.312
Feb 19	at New Mexico State	of	4	0	2	1	0	0	0	0	0	0	0	0	0	0	0	0	0	0	0.350
Feb 20	vs Western Michigan	of	3	2	2	1	0	0	0	0	0	0	0	0	0	0	0	2	0	0	0.391
Feb 20	at New Mexico State	of	4	1	2	0	0	0	0	0	1	0	0	0	0	0	0	0	0	0	0.407
Feb 25	vs Oregon State	of	3	0	0	0	0	0	0	0	0	0	0	0	0	0	0	0	0	0	0.289
Feb 25	vs Utah	of	2	0	0	0	0	0	0	0	0	0	0	0	0	0	0	1	0	0	0.344
Feb 26	vs Michigan	dh	3	0	0	0	0	0	0	0	0	0	0	0	0	0	0	0	0	0	0.314
Feb 27	vs UCLA	of	3	0	0	0	0	0	0	0	0	0	0	0	0	0	0	0	0	0	0.267
Mar 05	DARTMOUTH-1	of	2	2	2	4	0	0	2	0	0	0	0	0	0	0	0	0	0	0	0.325
Mar 05	DARTMOUTH-2	of	3	1	1	0	0	0	0	0	0	0	0	0	0	0	0	1	0	0	0.326
Mar 11	BYU	of	4	1	2	1	1	0	0	1	0	0	0	0	0	0	0	0	0	0	0.340
Mar 11	SAINT LOUIS	of	1	0	1	0	0	0	0	0	0	0	0	0	0	0	0	1	0	0	0.333
Mar 12	BYU	of	3	0	1	0	0	0	0	0	0	1	0	0	0	0	0	0	0	0	0.333
Mar 12	MARYLAND	of	4	2	2	6	0	0	2	0	0	0	0	0	0	0	0	3	0	0	0.345
Mar 13	MARYLAND	of	3	1	0	0	0	0	0	0	0	0	0	0	0	0	0	0	0	0	0.328
Mar 16	MINNESOTA	of	3	1	2	2	1	0	0	0	0	0	0	0	0	0	0	0	0	0	0.333
Mar 18	vs DePaul	of	3	0	0	1	0	0	0	0	0	0	0	0	0	0	0	2	0	0	0.318
Mar 18	at Cal State Fullerton	of	4	1	1	0	0	0	0	0	0	0	0	0	0	0	0	0	0	0	0.314
Mar 19	vs Grand Canyon	of	2	0	1	0	0	0	0	0	0	0	0	0	0	0	0	0	0	0	0.319
Mar 20	vs Nebraska	ph	1	1	1	0	0	0	0	1	0	0	0	0	0	0	0	0	0	0	0.329
Mar 25	UMKC	pr/of	1	1	1	4	0	0	1	0	0	0	0	0	0	0	0	0	0	0	0.338
Mar 26	vs UMKC	of	3	1	2	0	1	0	0	1	0	0	0	0	0	0	2	0	0	0	0.351
Mar 30	vs Oklahoma State	of	2	1	0	0	0	0	0	0	0	0	0	0	0	0	1	0	0	0	0.342
Apr 01	KANSAS	dh	3	0	0	0	0	0	0	0	0	0	0	0	0	0	1	0	0	0	0.329
Apr 02	KANSAS	pr	1	0	1	0	0	0	0	0	0	0	0	0	0	0	0	0	0	0	0.337
Apr 06	WICHITA STATE	pr/dh	1	0	0	0	0	0	0	0	0	1	0	0	0	0	0	0	0	0	0.333
Apr 09	at Baylor	ph	1	0	1	0	0	0	0	0	0	0	0	0	0	0	0	0	0	0	0.341
Apr 10	at Baylor	dh	4	2	2	1	1	0	0	0	0	0	0	0	0	0	0	0	0	0	0.348
Apr 13	NORTH TEXAS	dh	3	0	1	2	0	0	0	0	0	0	0	0	0	0	0	0	0	0	0.348
Apr 15	TEXAS-1	dh	2	0	0	1	0	0	0	1	0	0	0	0	0	0	0	0	0	0	0.340
Apr 15	TEXAS-2	dh	3	0	0	0	0	0	0	0	0	0	0	0	0	0	0	0	0	0	0.330
Apr 16	TEXAS	dh	3	0	1	0	0	0	0	0	0	0	0	0	0	0	0	0	0	0	0.330
Apr 20	at Arkansas	dh	4	1	2	2	0	0	1	0	0	0	0	0	0	0	0	0	0	0	0.337
Apr 23	at Tennessee	dh	4	1	2	1	0	0	0	0	0	0	0	0	0	0	0	0	0	0	0.343
Apr 23	vs Radford	dh/of	3	2	1	0	0	0	0	0	0	0	0	0	0	0	0	0	0	0	0.342
Apr 24	vs Lipscomb	dh/of	3	0	0	0	0	0	0	0	0	0	0	0	0	0	1	2	0	0	0.333
Apr 29	at Iowa State	dh	3	1	2	1	0	0	0	1	1	0	0	0	0	0	0	0	0	0	0.342
Apr 29	at Iowa State	dh	2	1	1	3	0	0	1	1	0	0	0	0	0	0	0	0	0	0	0.345
May 01	at Iowa State	dh	4	0	3	1	0	0	0	0	0	0	0	0	0	0	1	0	0	0	0.358
May 04	at Tulsa	dh	3	0	0	0	0	0	0	0	0	0	0	0	0	0	0	0	0	0	0.349
May 06	TEXAS TECH	dh	3	1	1	1	0	0	0	0	0	0	0	0	0	0	0	0	0	0	0.349
May 07	TEXAS TECH	dh	2	0	1	0	1	0	0	1	0	0	0	0	0	0	0	0	0	0	0.351
May 08	TEXAS TECH	dh	1	2	1	1	0	0	0	0	0	0	0	0	0	0	0	0	0	0	0.356
May 13	at Oklahoma State	dh	3	1	2	1	0	0	0	0	0	0	0	0	0	0	0	1	0	0	0.356
May 14	OKLAHOMA STATE	dh	3	0	1	2	0	0	0	0	0	0	0	0	0	0	0	0	0	0	0.355
May 20	WICHITA STATE	dh	3	1	2	0	0	0	0	0	0	0	0	0	0	0	0	0	0	0	0.362
May 21	OLE MISS	of	2	0	0	0	0	0	0	0	0	0	0	0	0	0	0	0	0	0	0.357
May 22	OLE MISS	dh	3	1	2	0	0	0	0	0	0	0	0	0	0	0	0	0	0	0	0.363
May 26	LOUISIANA-LAFAYET	dh	4	0	2	3	1	0	0	0	0	0	0	0	0	0	0	0	0	0	0.367
May 27	LOUISIANA-LAFAYET	dh	4	0	1	0	0	0	0	0	0	0	0	0	0	0	0	0	0	0	0.364
Jun 02	vs Alabama	dh	2	0	0	0	0	0	0	0	0	0	0	0	0	0	0	0	0	0	0.359
Jun 04	vs Michigan	dh	3	0	0	1	0	0	0	1	0	0	0	0	0	0	0	1	0	0	0.352
Jun 05	vs LSU	dh	3	0	1	0	0	0	0	1	0	0	0	0	0	0	0	0	0	0	0.352
Jun 06	vs Auburn	dh	3	0	1	0	0	0	0	0	0	0	0	0	0	0	0	0	0	0	0.352
Jun 07	vs Auburn	dh	4	0	1	1	0	0	0	1	0	0	0	0	0	0	0	1	0	0	0.349
Jun 08	vs Auburn	dh	3	0	2	1	0	0	0	0	0	0	0	0	0	0	0	0	0	0	0.355
Totals			55gs	172	38	61	8	0	8	12	5	5	6	0	3	1	10	23	0	0	0.355

On base pct. .409 • Slugging pct. .541



20 Caleigh Clifton

Wayne, Okla.
Wayne HS

INF	R/R	5-8	SO
-----	-----	-----	----

Year	Avg	GP	GS	AB	R	H	2B	3B	HR	RBI	TB	SLG%	BB	HBP	SO	OB%	SF	SH	SB	ATT	PO	A	E	FLD%
2016	.351	60	55	131	51	46	8	3	5	39	75	.573	39	16	16	.540	1	4	14	18	98	69	2	.988
2017	-	-	-	-	-	-	-	-	-	-	-	-	-	-	-	-	-	-	-	-	-	-	-	-
TOTAL	.351	60	55	131	51	46	8	3	5	39	75	.573	39	16	16	.540	1	4	14	18	98	69	2	.988

Career Honors

- ▶ 2016 First Team All-Region
- ▶ 2016 All-Big 12 Second Team honoree
- ▶ Chosen to 2016 All-Big 12 Freshman Team

2016 (Freshman)

- ▶ Played in 60 games with 55 starts (54 at 2B, 1 in LF)
- ▶ Led the team in walks (39), hit by pitch (16) and on-base percentage (.54) and tied for the team lead in triples (3)
- ▶ Ranked sixth in OU annals for hit by pitches and posted the eighth highest on-base percentage in OU history (ninth highest in Big 12 history)
- ▶ Had a 30-game on-base streak from 3/20 to 5/21
- ▶ Tied a career high with 3 hits, including a 2-run homer, and scored twice against Louisiana-Lafayette in the NCAA Super Regional (5/26)
- ▶ Hit a walk-off grand slam against Kansas (4/1)
- ▶ Set career highs in hits and runs by going 3-3 with 3 runs scored vs. UMKC (3/25)

High School

- ▶ Three-time Daily Oklahoman Little All-City honoree and three-time Southern Plains Conference MVP
- ▶ Helped lead Wayne to 2A state championship in 2012 as she hit .605 with 59 runs scored, 15 home runs and 28 stolen bases
- ▶ Three-time Daily Oklahoman Little All-City honoree in basketball and two-time pick in slowpitch

Travel Ball

- ▶ Played with Oklahoma Exclusive Gold out of Midwest City, Okla., under head coach Donnie Hughes
- ▶ Made appearances at Gold Nationals in 2013 and 2014

Personal

- ▶ Daughter of Dewayne and Marina Clifton and has one brother, Cody, and two sisters, Chelsea and Chloe
- ▶ Sister, Chloe, plays softball at Seminole State College
- ▶ Chose OU over Missouri

Career

R - 3, 3x, MR vs. Texas Tech, 5/8/16
 H - 3, 3x, MR vs. Louisiana-Lafayette, 5/26/16
 2B - 1, 8x, MR vs. Wichita State, 4/6/16
 3B - 1, 3x, MR vs. Wichita State, 4/6/16
 HR - 1, 5x, MR vs. Louisiana-Lafayette, 5/26/16
 RBI - 4 vs. Kansas, 4/1/16
 BB - 3 at Iowa State, 5/1/16
 SB - 1, 14x, MR vs. LSU, 6/5/16
 HBP - 2 vs. Kansas, 4/3/16
 HITTING STREAK - 4, 3x, MR: 4/29/16-5/4/16

Season Highs

R - N/A
 H - N/A
 2B - N/A
 3B - N/A
 HR - N/A
 RBI - N/A
 BB - N/A
 SB - N/A
 HBP - N/A
 HITTING STREAK - N/A

2016 Oklahoma Softball Individual Game-by-Game for Oklahoma (as of Feb 01, 2017)

#20 Clifton, Caleigh - 60 games (All games)

Date	Opponent	Pos	AB	R	H	RBI	2B	3B	HR	BB	SB	CS	HBP	SAC	SF	GDP	K	PO	A	E	Avg
Feb 12	vs Washington	"2b	3	0	0	0	0	0	0	0	0	0	0	0	0	0	0	0	0	0	0.000
Feb 13	vs Lamar	"2b	2	1	1	1	0	0	0	0	0	0	0	0	0	0	0	0	0	0	.200
Feb 13	vs Syracuse	"2b	2	2	1	0	0	1	0	1	1	0	0	0	0	0	0	0	0	0	.286
Feb 14	vs Long Beach State	"2b	2	0	0	0	0	0	0	1	0	0	0	0	0	0	1	5	1	0	.222
Feb 19	vs Crispin	"2b	1	1	1	2	0	0	0	0	0	0	0	0	0	0	0	2	1	1	.250
Feb 19	at New Mexico State	"2b	1	1	1	2	0	0	0	2	0	0	0	0	0	0	0	2	0	0	.308
Feb 20	vs Western Michigan	of	2	1	1	2	0	0	0	1	0	0	0	0	0	0	0	0	0	0	.333
Feb 20	at New Mexico State	"2b	2	1	0	0	0	0	0	0	0	0	0	0	0	0	0	2	2	0	.294
Feb 25	vs Oregon State	ph/2b	0	0	0	0	0	0	0	1	0	0	0	0	0	0	0	0	1	0	.294
Feb 26	vs Fresno State	"2b	1	1	1	0	0	0	0	1	0	0	0	0	0	0	0	2	3	0	.333
Feb 27	vs UCLA	pr	0	0	0	0	0	0	0	0	0	0	0	0	0	0	0	0	0	0	.333
Mar 05	DARTMOUTH-2	ph/of	2	1	1	1	0	0	0	0	0	0	0	0	0	0	0	0	0	0	.350
Mar 11	SAINT LOUIS	"2b	3	0	2	2	0	0	0	0	0	1	0	0	0	0	0	2	0	0	.391
Mar 11	BYU	"2b	2	0	1	1	0	0	0	1	1	0	0	0	0	0	1	0	0	0	.400
Mar 12	BYU	"2b	3	1	2	1	0	0	0	0	0	0	0	0	0	0	0	2	1	0	.393
Mar 12	MARYLAND	"2b	2	0	0	0	0	0	0	1	0	0	0	0	0	0	0	1	1	0	.367
Mar 13	MARYLAND	"2b	3	1	1	0	1	0	0	0	1	0	0	0	0	0	0	1	1	0	.364
Mar 16	MINNESOTA	pr	2	1	0	0	0	0	0	0	0	0	0	0	0	0	0	0	0	0	.343
Mar 18	at Cal State Fullerton	"2b	0	0	0	1	0	0	0	0	0	0	0	0	0	0	0	1	0	0	.343
Mar 19	vs Grand Canyon	"2b	4	0	2	2	1	0	0	0	0	1	0	0	0	0	0	1	5	0	.359
Mar 19	vs Alabama	"2b	2	0	0	0	0	0	0	0	0	0	0	0	0	0	2	2	1	0	.341
Mar 20	vs Nebraska	"2b	2	2	1	0	1	0	0	0	0	0	0	0	0	0	0	5	0	0	.349
Mar 25	UMKC	"2b	3	3	3	1	0	0	0	0	1	0	0	0	0	0	0	0	0	0	.391
Mar 26	vs UMKC	"2b	2	0	0	0	0	0	0	0	0	0	0	0	0	0	1	0	1	0	.375
Mar 30	vs Oklahoma State	"2b	1	1	1	0	0	0	0	2	1	0	0	0	0	0	0	1	2	0	.388
Apr 01	KANSAS	"2b	2	1	1	4	0	0	0	1	1	0	0	0	0	0	0	1	3	0	.392
Apr 02	KANSAS	"2b	2	1	1	0	0	0	0	1	0	0	0	0	0	0	0	1	0	0	.396
Apr 03	KANSAS	"2b	1	0	0	0	0	0	0	0	0	0	0	0	0	0	0	3	1	0	.389
Apr 06	WICHITA STATE	"2b	3	2	2	2	1	1	0	0	0	0	0	0	0	0	0	2	2	0	.404
Apr 08	at Baylor	"2b	2	1	1	0	0	0	0	1	0	0	0	0	0	0	0	0	0	0	.407
Apr 09	at Baylor	"2b	3	0	0	0	0	0	0	0	0	0	0	0	0	0	2	2	4	0	.387
Apr 10	at Baylor	"2b	3	1	1	2	0	0	0	0	0	0	0	0	0	0	0	3	1	0	.385
Apr 13	NORTH TEXAS	"2b	1	1	0	0	0	0	0	2	0	0	0	0	0	0	0	0	0	0	.379
Apr 15	TEXAS-1	"2b	3	0	1	1	0	0	0	0	1	0	0	0	0	0	0	1	4	0	.377
Apr 15	TEXAS-2	"2b	1	0	0	0	0	0	0	2	0	0	0	0	0	0	0	1	1	0	.371
Apr 16	TEXAS	"2b	2	0	1	2	0	0	0	1	1	0	0	0	0	0	0	0	1	0	.375
Apr 20	at Arkansas	"2b	2	1	1	1	0	0	0	2	0	0	0	0	0	0	0	1	4	2	.378
Apr 23	at Tennessee	"2b	2	2	1	0	0	0	0	2	0	0	0	0	0	0	0	1	2	4	.382
Apr 23	vs Radford	"2b	4	1	3	0	0	0	0	0	0	0	0	0	0	0	0	0	0	0	.400
Apr 24	vs Lipscomb	"2b	2	0	0	0	0	0	0	0	0	0	0	0	0	0	1	0	0	0	.390
Apr 29	at Iowa State	"2b	1	1	1	0	0	0	0	2	1	0	0	0	0	0	0	2	1	0	.398
Apr 29	at Iowa State	"2b	3	2	1	2	0	0	1	1	0	0	0	0	0	0	0	1	2	2	.395
May 01	at Iowa State	"2b	2	3	1	1	0	0	1	3	1	0	0	0	0	0	0	2	3	0	.398
May 04	at Tulsa	"2b	3	1	1	0	0	0	0	1	1	0	0	0	0	0	0	0	1	2	.396
May 06	TEXAS TECH	"2b	2	0	0	1	0	0	0	0	1	0	0	0	0	0	0	3	0	0	.387
May 07	TEXAS TECH	"2b	3	1	1	0	0	0	0	0	0	0	0	0	0	0	0	1	0	0	.385
May 08	TEXAS TECH	"2b	1	3	1	0	0	0	0	1	0	0	0	0	0	0	0	0	0	0	.392
May 13	at Oklahoma State	"2b	2	2	1	0	0	0	0	1	0	0	0	0	0	0	0	1	1	0	.394
May 14	OKLAHOMA STATE	"2b	1	1	0	0	0	0	0	1	0	0	0	0	0	0	0	2	3	0	.390
May 20	WICHITA STATE	"2b	3	0	0	0	0	0	0	0	0	0	0	0	0	0	0	1	1	0	.379
May 21	OLE MISS	"2b	1	1	0	0	0	0	0	2	0	0	0	0	0	0	0	0	0	0	.371
May 22	OLE MISS	"2b	3	0	0	0	0	0	0	0	0	0	0	0	0	0	0	3	0	0	.361
May 26	LOUISIANA-LAFAYET	"2b	3	2	3	2	0	0	1	0	0	0	0	0	0	0	0	1	1	0	.378
May 27	LOUISIANA-LAFAYET	"2b	3	0	1	0	0	0	0	0	0	0	0	0	0	0	0	1	1	0	.368
Jun 02	vs Alabama	"2b	3	1	0	0	0	0	0	0	1	0	0	0	0	0	0	2	3	0	.362
Jun 04	vs Michigan	"2b	2	2	1	0	0	0	0	1	1	0	0	0	0	0	0	1	2	1	.364
Jun 05	vs LSU	"2b	4	1	0	1	0	0	0	1	0	0	0	0	0	0	0	1	0	0	.352
Jun 06	vs Auburn	"2b	3	0	1	0	0	0	0	0	0	0	0	0	0	0	0	1	1	0	.352
Jun 07	vs Auburn	"2b	3	1	1	1	0	0	0	0	0	0	0	0	0	0	0	1	1	1	.352
Jun 08	vs Auburn	"2b	3	1	1	0	0	0	0	0	0	0	0	0	0	0	0	2	3	0	.351
Totals			595	131	51	46	39	8	3	5	39	14	4	16	4	1	16	98	69	2	.351

On base pct. .540 • Slugging pct. .573



22 Alissa Dalton

Cypress, Texas
Cy-Fair HS

INF	L/R	5-7	FR
-----	-----	-----	----

Year	Avg	GP	GS	AB	R	H	2B	3B	HR	RBI	TB	SLG%	BB	HBP	SO	OB%	SF	SH	SB	ATT	PO	A	E	FLD%
2017	-	-	-	-	-	-	-	-	-	-	-	-	-	-	-	-	-	-	-	-	-	-	-	-
TOTAL	-	-	-	-	-	-	-	-	-	-	-	-	-	-	-	-	-	-	-	-	-	-	-	-

High School

- ▶ Ranked No. 34 in FloSoftball's Top 100 for the class of 2016
- ▶ Invited to try out for the USA Women's Junior National Team
- ▶ Voted a team captain for her senior season
- ▶ Injury cut short her junior season to just 12 games, but still managed to hit .595 with 26 RBI, 19 runs scored, 4 doubles, 3 triples, 2 home runs, 10 stolen bases, 8 walks and no strikeouts
- ▶ Tabbed first-team all-district and the school's Defensive Player of the Year as a junior, while as a sophomore earned district and school Offensive Player of the Year honors

Travel Ball

- ▶ Spent the past two seasons playing for the Diamond Sports Hotshots in Tomball, Texas, with fellow freshman, Nicole Mendes

Personal

- ▶ Daughter of Chris and Jennifer Dalton and has one brother, Josiah
- ▶ Chose OU over South Carolina, Texas A&M and Texas

Why Oklahoma?

"Besides the gorgeous campus, welcoming coaches and players, and the hospitable diehard Sooner fans, I chose Oklahoma because it's my home. Every camp and every visit I attended, the University of Oklahoma embraced me with open arms... I can see myself not only growing as an athlete, but as a Christian and as a person. I strive every day to be better than the last, and every day I spend at OU I see improvements in myself and the people around me."

Coach Gasso says:

"Alissa Dalton is an infielder who is very versatile. I've seen her play third, short and second. I've seen her do pretty much everything. She's a left-handed hitter that can hit for power and hit through gaps. She is a tough, tough out. She is that kind of hitter that can work the count and get what she wants. I think she's definitely going to make an impact as a freshman."

Career/Season Highs

- R - N/A
- H - N/A
- 2B - N/A
- 3B - N/A
- HR - N/A
- RBI - N/A
- BB - N/A
- SB - N/A
- HBP - N/A
- HITTING STREAK - N/A



6

Macey Hatfield Maysville, Okla. Seminole State College

UTL	R/R	5-7	SR
-----	-----	-----	----

Year	Avg	GP	GS	AB	R	H	2B	3B	HR	RBI	TB	SLG%	BB	HBP	SO	OB%	SF	SH	SB	ATT	PO	A	E	FLD%
2014	.290	23	7	31	8	9	2	0	1	6	14	.452	4	1	6	.389	0	0	0	0	1	0	0	1.000
2015	.282	31	8	39	7	11	0	0	3	12	20	.513	3	0	5	.326	1	0	0	0	4	10	1	.933
2016	.350	42	4	40	6	14	1	0	2	11	21	.525	4	0	4	.400	1	0	0	0	4	3	0	1.000
2017	-	-	-	-	-	-	-	-	-	-	-	-	-	-	-	-	-	-	-	-	-	-	-	-
TOTAL	.309	96	19	110	21	34	3	0	6	29	55	.500	11	1	15	.371	2	0	0	0	9	13	1	.957

2016 (Junior)

- ▶ Played in 42 games with 4 starts (2 at 3B, 1 at DP, 1 in LF)
- ▶ Made first career start in LF and was 2-3 with season-high 2 RBI, a run scored and a walk at Iowa State (5/1)
- ▶ Recorded a pinch-hit home run against Wichita State (4/6)

2015 (Sophomore)

- ▶ Played in 31 games with 8 starts (5 at 2B, 3 at DP)
- ▶ Hit a 2-run homer and tied career high with 2 runs scored vs. East Carolina (3/15)
- ▶ Hit first career grand slam for a career-high 4 RBI against Samford (3/8)

2014 (Freshman)

- ▶ Played in 23 games with 7 starts (5 in RF, 2 as the DP)
- ▶ Hit the first home run and double of her career and tied season highs with 3 RBI and 2 runs scored at Iowa State (3/30)
- ▶ Made the first start of her career and was a career-best 3-3 with 2 runs scored and 3 RBI at Iowa State (3/29)

Seminole State

- ▶ Spent the 2013 fall semester at Seminole State before transferring to OU

High School

- ▶ Named the Sooner Conference Offensive Player of the Year as a senior and was chosen for the Sooner Conference All-Star Team
- ▶ Selected as Lindsay's Female Athlete of the Year as a senior
- ▶ Spent her first two years at Maysville High School before finishing her career at Lindsay High School
- ▶ Also earned four letters in basketball, where she was a two-time all-conference player, and two in track and field

Travel Ball

- ▶ Played four years for the Oklahoma Force Gold 95 under Jeff Sanders
- ▶ Team was the USSSA 18U state champions

Personal

- ▶ Daughter of Todd and Pam Hatfield and has one brother, Mitchell

Career Highs

R - 2, 4x, MR vs. East Carolina, 3/15/15
 H - 3 at Iowa State, 3/29/14
 2B - 1, 3x, MR vs. Texas Tech, 5/8/16
 3B - N/A
 HR - 1, 6x, MR vs. Wichita State, 4/6/16
 RBI - 4 vs. Samford, 3/8/15
 BB - 1, 11x, MR at Iowa State, 5/1/16
 SB - N/A
 HBP - 1 at Iowa State, 3/29/14
 HITTING STREAK - 5, 4/24/16-5/6/16

Season Highs

R - N/A
 H - N/A
 2B - N/A
 3B - N/A
 HR - N/A
 RBI - N/A
 BB - N/A
 SB - N/A
 HBP - N/A
 HITTING STREAK - N/A

2016 Oklahoma Softball
Individual Game-by-Game for Oklahoma (as of Feb 02, 2017)

Date	Opponent	Pos	# Hatfield, Macey - 42 games (All games)																						
			AB	R	H	RBI	2B	3B	HR	BB	SB	CS	HBP	SAC	SF	GDP	K	PO	A	E	Avg				
Feb 12	vs Washington	ph	1	0	0	0	0	0	0	0	0	0	0	0	0	0	0	0	0	0	0	0	0	0.000	
Feb 13	vs Lamar	ph/of	1	0	0	0	0	0	0	0	0	0	0	0	0	0	0	0	0	0	0	0	0	0.000	
Feb 13	vs Syracuse	ss	0	0	0	0	0	0	0	0	0	0	0	0	0	0	0	0	0	0	0	1	0	0.000	
Feb 14	vs Long Beach State	ph	1	1	1	1	0	0	1	0	0	0	0	0	0	0	0	0	0	0	0	0	0	0.333	
Feb 19	vs Creighton	ph	0	0	0	0	0	0	0	1	0	0	0	0	0	0	0	0	0	0	0	0	0	0.333	
Feb 19	at New Mexico State	ph	1	0	0	0	0	0	0	0	0	0	0	0	0	0	0	0	0	0	0	0	0	0.250	
Feb 20	vs Western Michigan	ph	1	0	0	0	0	0	0	0	0	0	0	0	0	0	0	0	0	0	0	0	0	0.200	
Feb 25	vs Oregon State	ph	1	0	0	0	0	0	0	0	0	0	0	0	0	0	0	0	0	0	0	0	0	0.167	
Feb 26	vs Michigan	ph	1	0	0	0	0	0	0	0	0	0	0	0	0	0	0	0	0	0	0	0	0	0.143	
Feb 27	vs UCLA	ph	1	0	1	0	0	0	0	0	0	0	0	0	0	0	0	0	0	0	0	0	0	0.250	
Mar 05	DARTMOUTH-2	ph/of	1	0	0	0	0	0	0	0	0	0	0	0	0	0	0	0	0	0	0	0	0	0.222	
Mar 11	SAINT LOUIS	ph	1	0	0	1	0	0	0	0	0	0	0	0	0	0	0	0	0	0	0	0	0	0.200	
Mar 13	MARYLAND	ph	1	0	0	0	0	0	0	0	0	0	0	0	0	0	0	0	0	0	0	0	0	0.182	
Mar 18	vs DePaul	ph/of	1	1	1	0	0	0	0	0	0	0	0	0	0	0	0	0	0	0	0	0	0	0.250	
Mar 18	at Cal State Fullerton	ph	1	0	0	0	0	0	0	0	0	0	0	0	0	0	0	0	0	0	0	0	0	0.231	
Mar 19	vs Grand Canyon	ph/1b	1	0	0	0	0	0	0	0	0	0	0	0	0	0	0	0	0	0	0	1	0	0.214	
Mar 20	vs Nebraska	ph	1	0	0	0	0	0	0	0	0	0	0	0	0	0	0	0	0	0	0	0	0	0.200	
Mar 26	vs UMKC	ph	1	0	0	0	0	0	0	0	0	0	0	0	0	0	0	0	0	0	0	1	0	0.188	
Apr 03	KANSAS	ph	1	0	1	1	0	0	0	0	0	0	0	0	0	0	0	0	0	0	0	0	0	0.235	
Apr 06	WICHITA STATE	of	1	1	1	1	0	0	1	0	0	0	0	0	0	0	0	0	0	0	0	0	0	0.278	
Apr 08	at Baylor	dh	2	0	0	0	0	0	0	0	0	0	0	0	0	0	0	0	0	0	0	2	0	0.250	
Apr 13	NORTH TEXAS	ph	1	0	0	0	0	0	0	0	0	0	0	0	0	0	0	0	0	0	0	0	0	0.238	
Apr 15	TEXAS-1	ph	1	0	0	0	0	0	0	0	0	0	0	0	0	0	0	0	0	0	0	0	0	0.227	
Apr 15	TEXAS-2	pr	0	1	0	0	0	0	0	0	0	0	0	0	0	0	0	0	0	0	0	0	0	0.227	
Apr 16	TEXAS	ph	0	0	0	0	0	0	0	1	0	0	0	0	0	0	0	0	0	0	0	0	0	0.227	
Apr 20	at Arkansas	3b	0	0	0	0	0	0	0	0	0	0	0	0	0	0	0	0	0	0	0	1	3	0.227	
Apr 23	at Tennessee	pr	0	0	0	0	0	0	0	0	0	0	0	0	0	0	0	0	0	0	0	0	0	0.227	
Apr 23	vs Radford	ph/3b	2	0	0	0	0	0	0	0	0	0	0	0	0	0	0	0	0	0	0	0	0	0.208	
Apr 24	vs Lipscomb	3b	3	0	2	1	0	0	0	0	0	0	0	0	0	0	0	0	0	0	0	0	0	0.259	
Apr 29	at Iowa State	ph	0	0	0	0	0	0	0	1	0	0	0	0	0	0	0	0	0	0	0	0	0	0.259	
Apr 29	at Iowa State	ph/of	2	1	2	1	0	0	0	0	0	0	0	0	0	0	0	0	0	0	0	0	0	0.310	
May 01	at Iowa State	of	3	1	2	2	0	0	0	1	0	0	0	0	0	0	1	0	0	0	0	1	0	0.344	
May 04	at Tulsa	ph	1	0	1	1	0	0	0	0	0	0	0	0	0	0	0	0	0	0	0	0	0	0.364	
May 06	TEXAS TECH	ph	1	0	1	0	0	0	0	0	0	0	0	0	0	0	0	0	0	0	0	0	0	0.382	
May 07	TEXAS TECH	ph	1	0	0	0	0	0	0	0	0	0	0	0	0	0	0	0	0	0	0	0	0	0.371	
May 08	TEXAS TECH	ph/of	1	0	1	2	1	0	0	0	0	0	0	0	0	0	0	0	0	0	0	0	0	0.389	
May 13	at Oklahoma State	of	1	0	0	0	0	0	0	0	0	0	0	0	0	0	0	0	0	0	0	0	0	0.378	
May 14	OKLAHOMA STATE	of	0	0	0	0	0	0	0	0	0	0	0	0	0	0	0	0	0	0	0	0	0	0.378	
May 20	WICHITA STATE	of	0	0	0	0	0	0	0	0	0	0	0	0	0	0	0	0	0	0	0	0	0	0.378	
May 21	OLE MISS	ph	1	0	0	0	0	0	0	0	0	0	0	0	0	0	0	0	0	0	0	0	0	0.368	
May 22	OLE MISS	ph	1	0	0	0	0	0	0	0	0	0	0	0	0	0	0	0	0	0	0	0	0	0.359	
May 27	LOUISIANA-LAFAYET	ph	1	0	0	0	0	0	0	0	0	0	0	0	0	0	0	0	0	0	0	0	0	0.350	
Totals			4gs	40	6	14	11	1	0	2	4	0	0	0	0	0	0	0	0	0	1	0	4	3	0.350

On base pct. .400 • Slugging pct. .525



17 Shay Knighten

Buena Park, Calif.
Sunny Hills HS

INF	R/R	5-6	SO
-----	-----	-----	----

Year	Avg	GP	GS	AB	R	H	2B	3B	HR	RBI	TB	SLG%	BB	HBP	SO	OB%	SF	SH	SB	ATT	PO	A	E	FLD%
2016	.397	60	56	179	48	71	10	0	13	62	120	.670	17	1	23	.449	1	1	9	12	179	27	5	.976
2017	-	-	-	-	-	-	-	-	-	-	-	-	-	-	-	-	-	-	-	-	-	-	-	-
TOTAL	.397	60	56	179	48	71	10	0	13	62	120	.670	17	1	23	.449	1	1	9	12	179	27	5	.976

Career Honors

- Placed on 2017 USA Softball Top 50 Preseason Watch List
- Ranked No. 11 on ESPNW's 2017 Preseason Top 25 Players Countdown
- Named a 2016 NFCA Second Team All-American
- One of three finalists for 2016 NFCA Freshman of the Year
- Placed on WCWS All-Tournament Team
- 2016 First Team All-Region selection
- 2016 Big 12 Freshman of the Year, 2016 All-Big 12 First Team and 2016 All-Big 12 Freshman Team
- Big 12 Player of the Week (4/19/16)

2016 (Freshman)

- Played in 60 games with 56 starts (35 at 1B, 11 at 2B, 7 at DP, 2 in RF, 1 in LF)
- Led the team in average, home runs, RBI and slugging
- Became the first freshman to lead the team in batting average since 2010
- Was 9-19 (.474) during the WCWS with 2 homers and 8 RBI
- Blasted a walk-off, three-run homer to beat Alabama in the WCWS (6/2)
- Tied a career high in hits by going 3-3 with 4 RBI, including a 3-run double in the NCAA Regional against Ole Miss (5/21)
- Drove in 4 runs, including a 3-run homer, matched a career-high with 3 hits and stole a career-high 2 bases in game one of a DH against Texas (4/15)
- Hit a walk-off, 2-run home run to beat No. 6 Alabama (3/19)
- Had the first multi-homer game of her career with 2 homers and 4 RBI against No. 2 Michigan (2/26)
- Went 3-4 with 3 runs scored, 5 RBI, a stolen base, a double and her first career home run at New Mexico State (2/19)

High School

- Named the No. 5 player in FullCount Softball's Top 100 in Oct. of 2014 and the No. 4 player in Student Sports Softball's Top 100 in Jan. of 2014
- As a junior, named First-Team All-State Underclass by CalHiSports in 2014, Second-Team All-County and Top 10 Orange County Players by OC Sidelines, Third-Team All-County and Top 10 Orange County Players by O.C. Register and also named First-Team All-League and team MVP as a junior

Travel Ball

- Played for the Corona Angels in Corona, Calif., under Marty Tyson
- Claimed titles at the 2014 18U Triple Crown/USA National Championships, 2014 18U ASA Champions Cup and 2014 18U Louisville Slugger Independence Day Tournament

Personal

- Daughter of Kenny and Marci Knighten and has two sisters, Briayna and Marjani, and one brother, Marquis
- Father, Kenny, played baseball at USC; sister, Marjani, plays softball at Nebraska
- Chose OU over Cal, Nebraska, Washington and UCLA

Career Highs

R - 3 at New Mexico State, 2/19/16
 H - 3, 5x, MR vs. Ole Miss, 5/21/16
 2B - 1, 10x, MR vs. Ole Miss, 5/21/16
 3B - N/A
 HR - 2 vs. Michigan, 2/26/16
 RBI - 5 at New Mexico State, 2/19/16
 BB - 2, 2x, MR vs. Kansas, 4/1/16
 SB - 2 vs. Texas (G1), 4/15/16
 HBP - 1 at Baylor, 4/10/16
 HITTING STREAK - 7, 5/1/16-5/14/16

Season Highs

R - N/A
 H - N/A
 2B - N/A
 3B - N/A
 HR - N/A
 RBI - N/A
 BB - N/A
 SB - N/A
 HBP - N/A
 HITTING STREAK - N/A

2016 Oklahoma Softball
 Individual Game-by-Game for Oklahoma (as of Feb 02, 2017)

#17 Knighten, Shay - 60 games (All games)

Date	Opponent	Pos	AB	R	H	RBI	2B	3B	HR	BB	SB	CS	HBP	SAC	SF	GDP	K	PO	A	E	Avg	
Feb 12	vs Minnesota	2b	1	1	1	0	0	0	0	0	0	0	0	0	0	0	0	0	0	0	1.000	
Feb 13	vs Lamar	2b	1	1	1	0	0	0	0	0	0	0	0	0	0	0	0	0	0	0	.333	
Feb 13	vs Syracuse	ph	1	0	0	0	0	0	0	0	0	0	0	0	0	0	0	0	0	0	.250	
Feb 14	vs Long Beach State	ph/2b	1	1	1	0	0	0	0	0	0	0	0	0	0	0	0	0	0	0	.400	
Feb 19	vs Creighton	dh	4	0	0	1	0	0	0	0	0	0	0	0	0	0	0	0	0	0	.222	
Feb 19	at New Mexico State	dh	4	3	3	5	1	0	1	0	1	0	0	0	0	0	0	0	0	0	.385	
Feb 20	vs Western Michigan	2b	2	2	2	2	0	0	1	2	0	0	0	0	0	0	0	0	0	2	.467	
Feb 20	at New Mexico State	dh	4	0	1	1	0	0	0	0	0	0	0	0	0	0	0	0	0	0	.421	
Feb 25	vs Oregon State	2b	3	0	0	0	0	0	0	0	0	0	0	0	0	0	0	1	1	0	.264	
Feb 25	vs Ulah	2b	4	1	3	0	1	0	0	0	0	0	0	0	0	0	0	0	2	2	.448	
Feb 26	vs Michigan	2b	3	2	2	4	0	0	2	1	0	0	0	0	0	0	0	0	0	0	.448	
Feb 26	vs Fresno State	dh/lf	3	0	0	0	0	0	0	0	0	0	0	0	0	0	0	0	0	0	.406	
Feb 27	vs UCLA	2b	4	1	2	2	0	0	0	0	0	0	0	0	0	0	0	1	3	1	.417	
Mar 05	DARTMOUTH-1	2b	3	1	1	0	1	0	0	1	0	0	0	0	0	0	0	1	1	1	.410	
Mar 05	DARTMOUTH-2	2b	4	1	2	2	0	0	1	0	0	0	0	0	0	0	0	0	0	0	.419	
Mar 13	MARYLAND	ph	1	0	1	1	0	0	0	0	0	0	0	0	0	0	0	0	0	0	.432	
Mar 16	MINNESOTA	2b	4	0	2	2	0	0	1	0	0	0	0	0	0	0	0	1	2	0	.438	
Mar 18	vs DePaul	2b	4	1	1	0	1	0	0	0	0	0	0	0	0	0	0	0	0	1	.423	
Mar 18	at Cal State Fullerton	2b	3	0	0	0	0	0	0	0	0	0	0	0	0	0	0	0	0	2	.400	
Mar 19	vs Grand Canyon	of/dh	4	1	1	1	0	0	0	1	0	0	0	0	0	0	0	0	0	0	.390	
Mar 19	vs Alabama	dh	3	1	1	2	0	0	1	0	0	0	0	0	0	0	0	2	0	0	.387	
Mar 20	vs Nebraska	of/dh	3	1	1	0	1	0	0	0	0	0	0	0	0	0	0	0	1	0	.385	
Mar 25	UMKC	of	3	1	0	0	0	0	0	0	0	0	0	0	0	0	0	0	0	0	.382	
Mar 26	vs UMKC	dh	4	1	1	1	1	0	0	0	1	0	0	0	0	0	0	0	0	0	.375	
Mar 30	vs Oklahoma State	dh	3	1	1	3	0	0	1	0	0	0	0	0	0	0	0	0	0	0	.373	
Apr 01	KANSAS	2b	2	0	0	0	0	0	2	1	1	0	0	0	0	0	0	0	6	2	.364	
Apr 02	KANSAS	1b	4	1	2	0	0	0	0	0	0	0	0	0	0	0	0	0	5	0	.370	
Apr 03	KANSAS	1b	4	0	1	0	0	0	0	0	0	0	0	0	0	0	0	1	4	0	.365	
Apr 06	WICHITA STATE	1b	3	1	2	3	0	0	1	0	0	0	0	0	0	0	0	0	6	1	.375	
Apr 08	at Baylor	1b	4	0	1	0	0	0	0	0	0	0	0	0	0	0	0	0	7	1	.370	
Apr 09	at Baylor	1b	4	1	3	0	0	0	0	1	0	0	0	0	0	0	0	0	7	1	.385	
Apr 10	at Baylor	1b	2	1	0	0	0	0	1	0	0	1	0	0	0	0	0	0	4	1	.378	
Apr 13	NORTH TEXAS	1b	2	1	2	1	0	0	0	1	0	0	0	0	0	0	0	0	3	0	.390	
Apr 15	TEXAS-1	1b	3	2	3	4	1	0	1	2	0	0	0	0	0	0	0	0	0	1	.408	
Apr 15	TEXAS-2	1b	2	0	1	2	0	0	1	0	0	0	0	0	0	0	0	0	14	0	.410	
Apr 16	TEXAS	1b	2	0	1	1	0	0	0	1	0	1	0	0	0	0	0	0	4	0	.411	
Apr 16	TEXAS	1b	4	0	0	0	0	0	0	0	0	0	0	0	0	0	0	0	9	4	.390	
Apr 20	at Arkansas	1b	4	1	1	1	1	0	0	1	0	0	0	0	0	0	0	0	1	5	.391	
Apr 23	vs Tennessee	1b	2	0	0	0	0	0	0	0	0	0	0	0	0	0	0	0	0	0	.385	
Apr 23	vs Radford	1b	2	0	0	0	0	0	0	0	0	0	0	0	0	0	0	0	0	0	.385	
Apr 24	vs Lipscomb	1b	3	0	1	0	0	0	0	0	0	0	0	0	0	0	0	0	2	7	.383	
Apr 29	at Iowa State	1b	3	2	1	0	0	0	0	1	0	0	0	0	0	0	0	0	1	6	.382	
Apr 29	at Iowa State	1b	2	1	0	0	0	0	0	0	0	0	0	0	0	0	0	0	1	0	.376	
May 01	at Iowa State	1b	5	1	1	4	0	0	1	0	0	0	0	0	0	0	0	0	13	1	.369	
May 04	at Tulsa	1b	3	1	1	0	0	0	1	0	0	0	0	0	0	0	0	0	4	1	.368	
May 06	TEXAS TECH	1b	2	1	1	0	0	0	0	1	0	0	0	0	0	0	0	0	1	0	.370	
May 07	TEXAS TECH	1b	3	1	1	2	0	0	1	0	0	0	0	0	0	0	0	0	2	0	.370	
May 08	TEXAS TECH	1b	2	2	2	0	0	0	0	0	0	0	0	0	0	0	0	0	3	0	.379	
May 13	at Oklahoma State	1b	3	2	1	1	0	0	0	0	0	0	0	0	0	0	0	0	3	0	.378	
May 14	OKLAHOMA STATE	1b	1	1	1	1	0	0	0	0	0	0	0	0	0	0	0	1	0	4	.382	
May 20	WICHITA STATE	1b	2	1	0	0	0	0	1	0	0	0	0	0	0	0	0	0	4	0	.377	
May 21	OLE MISS	1b	3	1	3	4	1	0	0	0	0	0	0	0	0	0	0	0	4	1	.389	
May 22	OLE MISS	1b	3	0	2	0	0	0	0	0	0	0	0	0	0	0	0	0	1	1	.395	
May 26	LOUISIANA-LAFAYET	1b	4	2	1	0	0	0	0	0	0	0	0	0	0	0	0	0	6	0	.391	
May 27	LOUISIANA-LAFAYET	1b	4	0	2	3	0	0	0	0	0	0	0	0	0	0	0	0	2	6	.387	
Jun 02	vs Alabama	1b	4	0	2	3	0	0	0	0	0	0	0	0	0	0	0	0	0	0	.390	
Jun 04	vs Michigan	1b	4	1	2	2	0	0	0	1	0	0	0	0	0	0	0	0	1	5	.393	
Jun 05	vs LSU	1b	4	1	2	2	0	0	1	0	0	0	0	0	0	0	0	0	5	1	.395	
Jun 06	vs Auburn	1b	3	0	2	0	0	0	0	0	0	0	0	0	0	0	0	0	7	1	.400	
Jun 07	vs Auburn	1b	2	0	1	1	0	0	0	1	0	0	0	0	0	0	0	0	7	0	.401	
Jun 08	vs Auburn	1b	2	1	0	0	0	0	0	1	0	0	0	0	0	0	0	0	6	0	.397	
Totals			179	48	71	62	10	0	13	17	9	3	1	1	1	1	0	23	179	27	5	.397

On base pct. .449 • Slugging pct. .670



42

Mariah Lopez
Saugus, Calif.
Saugus HS

RHP	R/R	5-8	FR
-----	-----	-----	----

Year	ERA	W	L	App	GS	CG	SHO	CBO	SV	IP	H	R	ER	BB	SO	2B	3B	HR	BF	B/Avg	WP	HBP	BK	SFA	SHA
2017	-	-	-	-	-	-	-	-	-	-	-	-	-	-	-	-	-	-	-	-	-	-	-	-	-
TOTAL	-	-	-	-	-	-	-	-	-	-	-	-	-	-	-	-	-	-	-	-	-	-	-	-	-

High School

- ▶ Missed most of her junior season because of injury, but still became her school's all-time strikeout leader
- ▶ In preseason limited play, threw 124.0 innings with 194 strikeouts, a 12-2 record and 1.05 earned run average
- ▶ As a sophomore, named Foothill League Pitcher of the Year and first-team all-conference after throwing 94.2 innings with a 15-2 record, 170 strikeouts and a 0.59 ERA in league play

Travel Ball

- ▶ Played for the OC Batbusters in Anaheim, Calif.
- ▶ Helped lead her team to Premier Girls Fastpitch National Championships 2013, 2014 and 2015

Personal

- ▶ Daughter of Gama and Valerie Lopez
- ▶ Has two sisters, Makayla and Alexis and one brother, Gavin
- ▶ Uncle, Roland De la Maza, played baseball at Sacramento State, saw time in the Cleveland Indians organization and appeared in a major league game for the Kansas City Royals; cousin, Andru Cardenas, played baseball at Chico State and cousin, Ruben Cardenas, plays baseball at Cal State Fullerton
- ▶ Chose OU over Florida, Arizona, Washington and Fresno State

Why Oklahoma?

"I chose OU because of its amazing legacy and for the endless opportunities I will have as a Sooner. I fell in love with OU before I was even old enough to decide on a university and knew this was my destiny. I'm looking forward to working hard, building great friendships and winning several national championships. I feel incredibly blessed to be a part of something so special."

Coach Gasso says:

"Mariah Lopez is one of those athletes that has stood in championship games. She is probably one of the best pitchers in the 2016 class, if not the best. She works in a great organization with the Batbusters and has trained well. I think Mariah is going to do very well for us."

Career/Season Highs

IP - N/A
SO - N/A



14

Paige Lowary Dallas Center, Iowa Univ. of Missouri

LHP	L/L	5-10	JR
-----	-----	------	----

Year	ERA	W	L	App	GS	CG	SHO	CBO	SV	IP	H	R	ER	BB	SO	2B	3B	HR	BF	B/Avg	WP	HBP	BK	SFA	SHA
2015*	4.37	18	7	37	26	6	0	3	4	162.2	152	97	79	78	164	19	0	18	731	.244	17	15	7	3	10
2016*	4.18	25	8	44	31	16	4	3	2	198.0	186	110	92	103	151	21	0	17	899	.245	25	19	0	6	11
2017	-	-	-	-	-	-	-	-	-	-	-	-	-	-	-	-	-	-	-	-	-	-	-	-	-
TOTAL	4.27	43	15	81	57	22	4	6	6	360.2	338	207	171	181	315	40	0	35	1630	.244	42	34	7	9	21

* - at Missouri

Career Honors

- ▶ Member of 2016 USA Softball Women's Elite Team, 2015 USA Softball Junior Women's National Team and 2015 USA Softball Women's Elite Team
- ▶ Two-time SEC Pitcher of the Week (March 14-20, 2016 and Feb. 16-22, 2015) and SEC Co-Freshman of the Week (April 20-26, 2015)
- ▶ 2015 Freshman All-SEC
- ▶ 2014-15 First-Year SEC Academic Honor Roll

2016 (Sophomore at Missouri)

- ▶ Appeared in 44 games with 31 starts in the circle for Missouri
- ▶ 151 strikeouts ranked 10th in SEC / Top 90 in NCAA, 25 victories ranked tied for second in SEC, 198.0 innings pitched ranked fifth in SEC and 44 appearances and 31 starts ranked sixth in SEC
- ▶ In SEC play, her 10 wins ranked 3rd, 91.2 innings pitched ranked fourth and 61 strikeouts ranked seventh
- ▶ In NCAA Regional, went 3-0 with three complete game shutouts and allowed only seven hits (.127 BAA) with 13 strikeouts in 16.0 innings pitched

2015 (Freshman at Missouri)

- ▶ Appeared in 37 games, making 26 starts
- ▶ Named SEC Co-Freshman of the Week (April 20-26) after going 3-0 in the circle with 24 Ks in 21.0 IP in four games vs. Missouri State, Iowa and LSU
- ▶ Won her then ninth consecutive start vs. Lipscomb (March 13), fanning a career-high 10 batters
- ▶ In Mizzou and NCAA debut, went 2-0 at Dot Richardson Tournament, allowing two runs (one earned) in 12.1 IP, with a 15 strikeouts

High School

- ▶ Two-time Gatorade Iowa Softball Player of the Year for 2012 and 2013
- ▶ Earned first team all-conference and all-district recognition every season of her career
- ▶ Finished her Dallas Center-Grimes career by leading the team to a repeat Iowa Class 4A State Championship
- ▶ Left DC-G with school career records in games played (206), wins (124), career ERA (0.69), strikeouts (1,415), opponent batting average (.112) and innings pitched (923) and also set program career marks for hits (253), doubles (60) and total bases (403)

Personal

- ▶ Daughter of Kevin and Shelly Lowary and has one older brother, Craig, and a younger sister, Rachel

Career Highs

IP - 8.0, 3x, MR vs. Texas A&M, 4/23/16
SO - 10 vs. Lipscomb, 3/13/15

Season Highs

IP - N/A
SO - N/A

2016 Mizzou Softball Individual Game-by-Game for Mizzou (as of Jul 15, 2016)

#14 Paige Lowary - 44 appearances (All games)

Date	Opponent	GS	IP	H	R	ER	BB	SO	2B	3B	HR	WP	BK	HBP	IBB	Score	W-L	Sv	ERA	NP
Feb 19	vs Jacksonville State	4.0	2.0	0	1	4	0	0	0	0	0	1	0	0	0	8-0	1-0	0	0.00	64
Feb 20	vs UAB	5.1	6.1	1	1	3	1	0	0	0	0	0	0	0	0	12-5	2-0	0	0.75	63
Feb 21	vs Stetson	4.0	4.1	1	0	2	1	0	0	0	0	0	1	0	0	13-1	3-0	0	0.53	70
Feb 25	vs North Carolina State	2.0	1.1	1	0	4	0	0	0	0	0	0	0	0	0	17-2	4-0	0	0.91	34
Feb 25	vs Stanford	3.0	4.2	1	0	3	1	0	0	0	0	0	0	0	0	0-5	4-1	0	1.15	52
Feb 26	vs Colorado State	5.0	3.1	1	1	6	2	0	0	0	0	2	0	0	0	9-1	5-1	0	1.20	82
Feb 27	vs Oregon	4.0	7.6	4	3	5	1	0	0	0	0	0	0	0	0	7-8	5-1	0	2.05	88
Mar 03	vs Michigan	3.0	6.11	11	7	2	1	0	1	1	0	2	1	0	0	0-13	5-2	0	4.38	88
Mar 03	vs California	8.0	8.5	3	4	4	2	0	0	0	0	1	0	0	0	6-5	6-2	0	4.02	155
Mar 05	vs Baylor	5.0	4.4	4	3	5	2	0	1	1	0	0	0	0	0	10-4	7-2	0	4.20	87
Mar 11	at Ole Miss	7.0	5.3	3	5	4	0	0	0	0	0	2	0	0	0	1-5	8-2	0	4.03	119
Mar 13	at Ole Miss-2	2.0	5.3	3	2	0	0	0	0	0	0	0	0	0	0	0-9	8-2	0	4.28	55
Mar 16	WESTERN ILLINOIS	5.0	2.0	0	0	2	0	0	0	0	0	0	0	0	0	6-0	9-2	0	3.91	65
Mar 19	at New Mexico State-1	3.0	3.0	0	0	0	8	1	0	0	0	0	0	0	0	9-6	10-2	0	3.71	58
Mar 19	at New Mexico State-2	6.0	4.2	1	4	5	1	0	0	0	0	1	0	0	0	14-3	11-2	0	3.48	96
Mar 20	at New Mexico State	5.2	5.1	0	4	7	0	0	0	0	0	1	0	0	0	5-1	12-2	0	3.21	120
Mar 23	NORTHERN IOWA	1.0	0.0	0	0	1	2	0	0	0	0	0	0	0	0	6-0	12-2	0	3.16	24
Mar 26	at Alabama-1	7.0	4.3	2	7	3	0	0	0	0	0	1	0	0	0	7-3	13-2	0	3.06	127
Mar 28	at Alabama	1.0	3.6	3	2	1	0	0	0	0	0	0	0	0	0	2-16	13-3	0	3.28	24
Apr 01	TENNESSEE	2.0	3.5	5	6	1	0	0	0	0	0	0	0	0	0	3-7	13-4	0	3.63	70
Apr 02	TENNESSEE	1.1	5.4	3	1	2	1	0	0	0	0	0	0	0	0	5-4	13-4	0	3.82	30
Apr 03	TENNESSEE	6.0	9.3	2	5	4	1	0	0	0	0	0	0	0	0	7-3	14-4	0	3.72	120
Apr 08	GEORGIA	0.1	4.4	3	1	1	0	0	0	0	0	0	0	0	0	4-12	14-4	0	3.94	30
Apr 09	GEORGIA	2.0	4.4	3	0	2	0	0	0	0	0	0	0	0	0	0-10	14-4	0	4.08	43
Apr 10	GEORGIA	7.0	9.6	6	2	1	1	0	3	2	0	0	0	0	0	3-6	14-5	0	4.21	115
Apr 13	WICHITA STATE-2	4.0	3.2	2	2	0	0	0	0	0	0	0	0	0	0	9-2	15-5	0	4.19	53
Apr 15	at Kentucky	3.0	0.0	0	0	4	0	0	0	0	0	0	0	0	0	6-7	15-5	0	4.07	44
Apr 16	at Kentucky	7.0	9.2	1	3	6	1	0	0	0	0	3	0	0	0	9-2	16-5	0	3.88	123
Apr 17	at Kentucky	5.2	4.3	3	3	0	0	2	0	0	0	1	0	0	0	2-3	16-6	0	3.87	93
Apr 19	at Iowa-2	2.1	1.0	0	0	3	0	0	0	0	0	1	0	0	0	11-4	16-6	0	3.80	33
Apr 23	TEXAS A&M	8.0	7.6	6	6	5	6	1	0	0	0	3	0	0	0	7-6	17-6	0	3.89	161
Apr 24	TEXAS A&M	0.1	0.0	0	0	0	0	0	0	0	0	0	0	0	0	2-1	18-6	0	3.88	6
Apr 25	TEXAS A&M	3.0	1.0	0	1	2	0	0	0	0	0	0	0	0	0	7-1	18-6	1	3.79	32
Apr 29	at Mississippi State	7.0	7.5	4	3	3	0	0	1	1	0	0	0	0	0	8-8	19-6	1	3.80	111
Apr 30	at Mississippi State	2.0	0.0	0	0	4	0	0	0	0	0	0	0	0	0	3-1	19-6	2	3.75	27
May 1	at Mississippi State	6.0	4.0	0	0	6	2	0	0	0	0	0	2	0	0	9-2	20-6	2	3.59	95
May 06	SOUTH CAROLINA	7.0	4.2	2	5	6	0	0	0	0	0	2	0	0	0	5-2	21-6	2	3.52	129
May 08	SOUTH CAROLINA	7.0	5.0	0	2	6	0	0	0	0	0	0	0	0	0	2-0	22-6	2	3.37	104
May 11	vs South Carolina	7.0	8.4	4	1	5	1	0	0	0	0	1	0	0	0	4-7	22-6	2	3.40	104
May 19	vs BYU	5.0	2.0	0	2	5	0	0	0	0	0	0	0	0	0	9-0	23-6	2	3.30	82
May 20	NEBRASKA	6.0	2.0	0	2	6	0	0	0	0	0	0	0	0	0	0-0	24-6	2	3.19	96
May 21	vs Nebraska	5.0	3.0	0	0	2	0	0	0	0	0	0	0	0	0	1-0	25-6	2	3.10	88
May 28	at Michigan	6.0	7.5	5	3	3	1	0	1	0	0	3	0	0	0	3-5	25-7	2	3.19	111
May 29	at Michigan	7.0	9.5	5	1	5	1	0	1	2	0	1	0	0	0	4-5	25-8	2	3.25	104
Totals		31	198.0	186	110	92	103	151	21	0	17	25	0	19	2	283-180	25-8	2	3.28	



27 Kylie Lundberg

Lakewood, Calif.
Lakewood HS

OF	L/L	6-0	SO
----	-----	-----	----

Year	Avg	GP	GS	AB	R	H	2B	3B	HR	RBI	TB	SLG%	BB	HBP	SO	OB%	SF	SH	SB	ATT	PO	A	E	FLD%
2016	.333	13	0	12	0	4	2	0	0	0	6	.500	1	0	1	.385	0	0	0	0	0	0	0	---
2017	-	-	-	-	-	-	-	-	-	-	-	-	-	-	-	-	-	-	-	-	-	-	-	-
TOTAL	.333	13	0	12	0	4	2	0	0	0	6	.500	1	0	1	.385	0	0	0	0	0	0	0	---

2016 (Freshman)

- ▶ Played in 13 games
- ▶ Doubled in pinch-hit at-bat against Texas (4/16)
- ▶ Made Sooners debut with a pinch-hit double against Lamar (2/13)

High School

- ▶ Ranked No. 53 on the FullCount Softball Top 100
- ▶ Helped her team to two league titles
- ▶ In both her junior and sophomore seasons was named First-Team All-Moore League, Press Telegram Dream Team Second Team and the Lakewood Offensive Player of the Year

Travel Ball

- ▶ Played for SoCal Athletics for Joey Quarles
- ▶ Team won the 2014 Independence Day Louisville Tournament

Personal

- ▶ Daughter of Craig and Holly Lundberg and has one sister, Kendall
- ▶ Mother, Holly, played under OU head coach Patty Gasso at Long Beach City College and assistant coach JT Gasso was the ring bearer in Kylie's parents' wedding when he was younger
- ▶ Cousin, Diane Lewis, played softball at Long Beach State
- ▶ Chose OU over Marshall and South Carolina

Career Highs

R - N/A
H - 1, 4x, MR at Oklahoma State, 5/13/16
2B - 1, 2x, MR vs. Texas, 4/16/16
3B - N/A
HR - N/A
RBI - N/A
BB - 1 vs. Wichita State, 4/6/16
SB - N/A
HBP - N/A
HITTING STREAK - N/A

Season Highs

R - N/A
H - N/A
2B - N/A
3B - N/A
HR - N/A
RBI - N/A
BB - N/A
SB - N/A
HBP - N/A
HITTING STREAK - N/A

2016 Oklahoma Softball
Individual Game-by-Game for Oklahoma (as of Feb 02, 2017)

#27 Lundberg, Kylie - 13 games (All games)

Date	Opponent	Pos	AB	R	H	RBI	2B	3B	HR	BB	SB	CS	HBP	SAC	SF	GDP	K	PO	A	E	Avg	
Feb 13	vs Lamar	ph	1	0	1	0	1	0	0	0	0	0	0	0	0	0	0	0	0	0	0	1.000
Feb 14	vs Long Beach State	ph	1	0	0	0	0	0	0	0	0	0	0	0	0	0	0	0	0	0	0	.500
Feb 19	at New Mexico State	ph	1	0	0	0	0	0	0	0	0	0	0	0	0	0	0	0	0	0	0	.333
Feb 20	vs Western Michigan	ph	1	0	0	0	0	0	0	0	0	0	0	0	0	0	0	0	0	0	0	.250
Mar 05	DARTMOUTH-2	ph	1	0	0	0	0	0	0	0	0	0	0	0	0	0	0	0	0	0	0	.200
Apr 06	WICHITA STATE	ph	0	0	0	0	0	0	0	1	0	0	0	0	0	0	0	0	0	0	0	.200
Apr 16	TEXAS	ph	1	0	1	0	1	0	0	0	0	0	0	0	0	0	0	0	0	0	0	.333
Apr 23	at Tennessee	ph	1	0	0	0	0	0	0	0	0	0	0	0	0	0	0	0	0	0	0	.286
Apr 23	vs Radford	ph/of	1	0	0	0	0	0	0	0	0	0	0	0	0	0	0	0	0	0	0	.250
Apr 29	at Iowa State	ph	1	0	0	0	0	0	0	0	0	0	0	0	0	0	0	0	0	0	0	.222
May 01	at Iowa State	ph	1	0	1	0	0	0	0	0	0	0	0	0	0	0	0	0	0	0	0	.300
May 08	TEXAS TECH	ph	1	0	0	0	0	0	0	0	0	0	0	0	0	0	0	0	0	0	0	.273
May 13	at Oklahoma State	ph	1	0	1	0	0	0	0	0	0	0	0	0	0	0	0	0	0	0	0	.333
Totals		0gs	12	0	4	0	2	0	0	1	0	0	0	0	0	0	0	0	0	0	0	.333

On base pct. .385 • Slugging pct. .500



11

Nicole Mendes
Houston, Texas
Home Schooled

UTL	L/L	5-7	FR
-----	-----	-----	----

Year	Avg	GP	GS	AB	R	H	2B	3B	HR	RBI	TB	SLG%	BB	HBP	SO	OB%	SF	SH	SB	ATT	PO	A	E	FLD%
2017	-	-	-	-	-	-	-	-	-	-	-	-	-	-	-	-	-	-	-	-	-	-	-	-
TOTAL	-	-	-	-	-	-	-	-	-	-	-	-	-	-	-	-	-	-	-	-	-	-	-	-

Year	ERA	W	L	App	GS	CG	SHO	CBO	SV	IP	H	R	ER	BB	SO	2B	3B	HR	BF	B/Avg	WP	HBP	BK	SFA	SHA
2017	-	-	-	-	-	-	-	-	-	-	-	-	-	-	-	-	-	-	-	-	-	-	-	-	-
TOTAL	-	-	-	-	-	-	-	-	-	-	-	-	-	-	-	-	-	-	-	-	-	-	-	-	-

Travel Ball

- ▶ Spent last season playing for Diamond Sports Hotshots along with fellow signee, Alissa Dalton
- ▶ Last summer, hit .355 with 27 runs scored, 20 runs driven in, 2 homers and 20 stolen bases and threw 135.0 innings with 136 strikeouts and 1.45 ERA

Personal

- ▶ Daughter of Paul and Nina Mendes and has one sister, Brittany
- ▶ Was home schooled
- ▶ Chose OU over Tennessee, Missouri, Texas A&M, LSU and Texas

Why Oklahoma?

"I chose the University of Oklahoma for several reasons. Not only does it have a strong focus on academics but it has an excellent softball program. But what makes Oklahoma really stand out to me and what makes me look forward to attending OU is how it will develop me as a person, help me grow as a leader and challenge me to accomplish my dreams. I believe that by attending the University of Oklahoma I will be in an environment that will help me reach my full potential as a student, as an athlete and as a person."

Coach Gasso says:

"Nicole Mendes is another one of those versatile athletes. She's a left-handed pitcher who could throw some innings for us, but she's also a phenomenal centerfielder. She also can play first base and is a very good left-handed hitter. She's got tremendous speed and a strong arm. I think she's one of those athletes that is very few and far between because she has the ability to pitch; it's a Shelby Pendley-style. She'll help us on the mound if we need it, but she'll also be fighting for a starting spot somewhere on the field, whether it's in the infield or the outfield."

Career/Season Highs

R - N/A
H - N/A
2B - N/A
3B - N/A
HR - N/A
RBI - N/A
BB - N/A
SB - N/A
HBP - N/A
HITTING STREAK - N/A

Career/Season Highs

IP - N/A
SO - N/A



18

Melanie Olmos
Riverside, Calif.
Grand Terrace HS

RHP	R-R	5-5	FR
-----	-----	-----	----

Year	ERA	W	L	App	GS	CG	SHO	CBO	SV	IP	H	R	ER	BB	SO	2B	3B	HR	BF	B/Avg	WP	HBP	BK	SFA	SHA
2017	-	-	-	-	-	-	-	-	-	-	-	-	-	-	-	-	-	-	-	-	-	-	-	-	-
TOTAL	-	-	-	-	-	-	-	-	-	-	-	-	-	-	-	-	-	-	-	-	-	-	-	-	-

High School

- ▶ Earned her league's MVP Pitcher Award as Grand Terrace won the league championship
- ▶ En route to winning the award, struck out 188 batters in 143.2 innings with a 1.46 ERA and a 23-4 record and posted a .429 batting average with 25 runs scored, 28 RBI and 3 home runs at the plate
- ▶ Also won the league MVP Pitcher Award in 2013, while in 2014 was named first-team all-league

Travel Ball

- ▶ Played for the Firecrackers 18 Gold team in Huntington Beach, Calif.
- ▶ Helped her squad to a seventh place finish at the PGF Nationals

Personal

- ▶ Daughter of Javier and Kathleen Olmos and has two sisters, Nadine and Brandice

Why Oklahoma?

"Oklahoma was my first and only un-official visit I went on. I chose to commit to OU because of the coaching staff and the success the softball program has had throughout the years... I am looking forward to competing once I hit the field my freshman year and earn my role as a starting pitcher. I want to be the best teammate and player I can be. I plan to take my classes and schoolwork seriously so I can graduate with honors. The most important thing is to graduate with a bachelor's degree in liberal arts to help me become an elementary school teacher."

Coach Gasso says:

"Melanie is another athlete I've watched compete for a championship in high school. Each year she's gotten better and better. She may not overpower you with her speed like Mariah (Lopez) does, but Melanie is more of a crafty pitcher who can spin it. You can never really square it up and hit it hard off of her because of her placement and the way she moves the ball. She is a good balance to what Mariah brings to the team. They are completely different, but they will complement each other very well."

Career/Season Highs

IP - N/A
SO - N/A



8

Paige Parker Independence, Mo. Truman HS

LHP	L/L	5-11	JR
-----	-----	------	----

Year	Avg	GP	GS	AB	R	H	2B	3B	HR	RBI	TB	SLG%	BB	HBP	SO	OB%	SF	SH	SB	ATT	PO	A	E	FLD%
2015	.394	58	58	137	27	54	5	0	9	43	86	.628	32	3	23	.514	1	2	1	1	4	19	2	.920
2016	.286	17	15	28	3	8	0	0	1	3	11	.393	9	0	8	.459	0	0	0	0	20	3	.870	
2017	-	-	-	-	-	-	-	-	-	-	-	-	-	-	-	-	-	-	-	-	-	-	-	-
TOTAL	.376	75	73	165	30	62	5	0	10	46	97	.588	41	3	31	.505	1	2	1	1	4	39	5	.896

Year	ERA	W	L	App	GS	CG	SHO	CBO	SV	IP	H	R	ER	BB	SO	2B	3B	HR	BF	B/Avg	WP	HBP	BK	SFA	SHA
2015	1.65	28	7	42	31	23	9	6	3	217.0	129	56	51	57	224	18	1	21	842	.170	4	10	1	2	13
2016	2.10	38	3	47	36	32	14	3	0	252.1	174	69	59	68	269	30	3	21	996	.194	8	10	0	4	17
2017	-	-	-	-	-	-	-	-	-	-	-	-	-	-	-	-	-	-	-	-	-	-	-	-	-
TOTAL	2.11	66	10	89	67	55	23	9	3	469.1	303	125	110	125	493	48	4	42	1838	.183	12	20	1	6	30

Career

- Placed on 2017 USA Softball Top 50 Preseason Watch List
- Ranked No. 3 on ESPNW's 2017 Preseason Top 25 Players Countdown
- Named Most Outstanding Player at the 2016 WCWS and added to the WCWS All-Tournament Team
- One of 25 finalists for the 2016 USA Softball Collegiate Player of the Year
- NFCA First Team All-American in 2016 and Second Team All-American in 2015
- 2015 NFCA Freshman of the Year and 2015 Big 12 Freshman of the Year
- 2015 and 2016 First Team All-Region
- 2015 and 2016 Big 12 Pitcher of the Year and 2015 and 2016 All-Big 12 First Team
- Two-time USA Softball Collegiate Player of the Week (4/12/16 and 4/14/15) and NFCA National Pitcher of the Week (4/14/15)
- 12-time Big 12 Pitcher of the Week (2016: 5/17; 5/10; 4/12; 3/15; 2/23. 2015: 5/5; 4/28; 4/14; 3/24; 3/17; 3/10; 2/9)
- Named to 2016 Academic All-Big 12 First Team with a 4.0 GPA, 2016 Academic All-District Team and 2016 Academic All-America First Team

Record Book

- Ended her sophomore season ranked second in Oklahoma history with a career winning percentage of .869 (66-10), fifth in strikeout rate (7.35) and no-hitters (5), seventh with 66 career wins, 493 strikeouts and an opponents' batting average of .183, ninth in complete games (55), shutouts (23) and saves (3) and 10th in innings pitched (469.1)

2016 (Sophomore)

- Played in 51 games with 40 starts (37 at P, 3 as DP)
- Tied the school record with 38 victories (third most in Big 12 history), finished third in OU annals with a .927 winning percentage (38-3), ranked fourth all-time at OU with 32 complete games and 14 shutouts, posted the eighth most strikeouts in Oklahoma history (269) and ranked 10th in OU history with 7.46 strikeouts per seven innings
- Led the nation in wins, was second in shutouts, 10th in strikeouts, 21st in ERA and 23rd in hits allowed/seven innings (4.83)

2015 (Freshman)

- Started all 58 games (32 at P, 26 at DP)
- Tied an NCAA record with four perfect games on the season
- Led the Big 12 in ERA, shutouts, wins and hits allowed per seven innings (4.16) and was second in saves and walks per seven innings (1.84) and third in on-base percentage
- Finished 13th nationally in hits allowed/seven innings, 14th in shutouts and wins and 19th in ERA
- Tied for second in OU history with three saves on the year and opponents' batting average of .170 was sixth lowest in a season at OU

High School

- 2010-11 and 2012-13 Gatorade Missouri High School Player of the Year
- Team won state championship as a junior and was runner-up as a freshman

Travel Ball

- Played for Originals Gold from Kansas City, Mo., under head coach Chad Bernholtz
- Team finished ninth at both the 14U ASA/USA Nationals and 16U ASA/USA Nationals

Personal

- Daughter of Kim and Terry Parker and has one sister, Samantha
- Chose OU over Kansas, Missouri and UCLA

Career Highs

R - 2, 6x, MR at Kansas, 4/25/15
 H - 3, 2x, MR at Oklahoma State, 4/22/15
 2B - 1, 5x, MR vs. Iowa State (G1), 4/4/15
 3B - N/A
 HR - 2 vs. Iowa, 3/15/15
 RBI - 4 vs. Central Arkansas, 3/31/15
 BB - 3 at Alabama (G2), 5/23/15
 SB - 1 vs. Saint Mary's, 2/6/15
 HBP - 1, 3x, MR vs. Utah Valley, 5/2/15
 HITTING STREAK - 9, 2/19/15-3/7/15
 IP - 8.0, 2x, MR vs. Alabama, 6/2/16
 SO - 13 at Texas Tech, 3/27/15

Season Highs

R - N/A
 H - N/A
 2B - N/A
 3B - N/A
 HR - N/A
 RBI - N/A
 BB - N/A
 SB - N/A
 HBP - N/A
 HITTING STREAK - N/A
 IP - N/A
 SO - N/A

2016 Oklahoma Softball
Individual Game-by-Game for Oklahoma (as of Feb 02, 2017)

#8 Parker, Paige - 28 games (All games)

Date	Opponent	Pst	AB	R	H	RBI	2B	3B	HR	BB	SO	SB	CS	HBP	SAC	SF	DP	K	PO	A	E	Av	
Feb 12	vs Minnesota	p	2	0	0	0	0	0	0	0	0	0	0	0	0	0	0	0	0	0	0	0	.000
Feb 13	vs Lamar	prdh	0	1	0	0	0	0	0	2	0	0	0	0	0	0	0	0	0	0	0	0	.000
Feb 20	vs Western Michigan	ph	0	0	0	0	0	0	1	0	0	0	0	0	0	0	0	0	0	0	2	0	.000
Feb 20	at New Mexico State	p	1	0	1	1	0	0	0	0	0	0	0	0	0	0	0	0	0	0	2	0	.333
Feb 25	vs Oregon State	p	0	0	0	0	0	0	0	0	0	0	0	0	0	0	0	0	0	0	2	0	.333
Mar 11	BYU	p	2	0	1	0	0	0	0	1	0	0	0	0	0	0	0	0	0	0	0	0	.400
Mar 12	BYU	p	3	0	2	0	0	0	0	0	0	0	0	0	0	0	0	0	0	0	1	0	.500
Mar 16	MINNESOTA	prdh	1	0	1	1	0	0	1	0	0	0	0	0	0	0	0	0	0	0	0	0	.556
Mar 18	vs DePaul	ph	0	0	0	0	0	0	0	0	0	0	0	0	0	0	0	0	0	0	0	0	.000
Mar 18	at Cal State Fullerton	dhnp	2	0	0	0	0	0	2	0	0	0	0	0	0	0	0	0	0	2	0	0	.429
Mar 19	vs Grand Canyon	dh	2	0	1	0	0	0	0	0	0	0	0	0	0	0	0	0	0	0	0	0	.438
Mar 19	vs Alabama	p	1	0	0	0	0	0	0	1	0	0	0	0	0	0	0	0	0	1	0	0	.412
Mar 20	vs Nebraska	dhnp	2	0	0	0	0	0	0	0	0	0	0	0	0	0	0	0	0	0	1	0	.368
Mar 25	UMKC	p	3	0	0	0	0	0	0	0	0	0	0	0	0	0	0	0	0	0	0	0	.500
Mar 30	vs Oklahoma State	p	0	0	0	0	0	0	0	0	0	0	0	0	0	0	0	0	0	0	1	0	.333
Apr 02	KANSAS	ph	1	0	0	0	0	0	0	0	0	0	0	0	0	0	0	0	0	0	0	0	.318
Apr 03	KANSAS	p	2	1	1	0	2	0	0	0	0	0	0	0	0	0	0	0	0	0	0	0	.833
Apr 06	WICHITA STATE	p	2	0	0	0	0	0	0	0	0	0	0	0	0	0	0	0	0	0	0	0	.308
Apr 08	at Baylor	p	0	0	0	0	0	0	0	0	0	0	0	0	0	0	0	0	0	0	1	0	.308
Apr 09	at Baylor	p	0	0	0	0	0	0	0	0	0	0	0	0	0	0	0	0	0	0	0	0	.308
Apr 20	at Arkansas	p	2	0	0	0	0	0	0	0	0	0	0	0	0	0	0	0	1	1	0	0	.286
Apr 29	at Iowa State	p	0	0	0	0	0	0	0	0	0	0	0	0	0	0	0	0	0	0	1	0	.286
May 06	TEXAS TECH	p	0	0	0	0	0	0	0	0	0	0	0	0	0	0	0	0	0	0	2	0	.286
May 13	at Oklahoma State	p	0	0	0	0	0	0	0	0	0	0	0	0	0	0	0	0	0	0	1	0	.286
May 20	WICHITA STATE	p	0	0	0	0	0	0	0	0	0	0	0	0	0	0	0	0	0	0	2	0	.286
Jun 04	vs Michigan	p	0	0	0	0	0	0	0	0	0	0	0	0	0	0	0	0	0	0	0	0	.286
Jun 06	vs Auburn	p	0	0	0	0	0	0	0	0	0	0	0	0	0	0	0	0	0	0	1	0	.286
Jun 08	vs Auburn	p	0	0	0	0	0	0	0	0	0	0	0	0	0	0	0	0	0	0	0	0	.286
Totals			28	3	8	3	0	1	9	0	0	0	0	0	0	0	0	0	0	20	3	286	

On base pct. .459 • Slugging pct. .393

Date	Opponent	GS	IP	H	R	ER	BB	SO	2B	3B	HR	WP	BK	HBP	IBB	Score	W-L	Sv	ERA	NP
Feb 12	vs Minnesota		6.1	4	1	1	2	9	0	0	0	1	0	0	0	0-1	0	0	1.11	101
Feb 12	vs Washington		1.1	3	0	0	0	2	0	1	1	0	0	0	0	0-10	0	0	3.65	25
Feb 13	vs Lamar		3.0	2	0	0	1	6	0	0	0	0	0	0	0	0-2	1	1	2.02	54
Feb 14	vs Long Beach State		3.0	2	0	0	1	1	0	0	0	0	0	0	0	0-1	1	1	2.05	49
Feb 19	at New Mexico State		5.0	4	1	1	0	8	0	1	0	0	0	0	0	11-1	2	1	1.88	81
Feb 20	at New Mexico State		6.0	4	0	0	1	7	1	0	0	0	0	2	0	8-0	3	1	1.42	83
Feb 25	vs Oregon State		6.2	8	6	6	2	6	5	1	2	0	0	0	0	1-4	3	2	2.46	109
Mar 05	DARTMOUTH2		2.0	1	0	0	1	3	0	0	0	0	0	0	0	0-0	0	0	7.0	32
Mar 11	SAINT LOUIS		1.0	0	0	0	0	3	0	0	0	0	0	0	0	0-0	0	0	9.4	32
Mar 11	BYU		5.0	0	0	0	1	19	0	0	0	0	0	0	0	8-0	4	2	1.86	73
Mar 12	BYU		7.0	2	0	0	2	5	0	0	0	0	0	0	0	3-0	5	2	1.66	107
Mar 12	MARYLAND		1.1	1	0	0	0	1	0	0	0	0	0	0	0	11-2	6	2	1.62	19
Mar 13	MARYLAND		2.2	1	0	0	1	6	0	0	0	0	0	0	0	5-0	1	0	1.50	43
Mar 16	MINNESOTA		2.1	3	5	5	1	4	0	0	0	0	0	1	10-12	7	2	2.09	48	
Mar 18	at Cal State Fullerton		2.1	4	6	4	3	3	0	0	0	1	0	0	0	5-7	7	3	2.50	73
Mar 19	vs Alabama		7.0	4	0	0	1	6	0	0	0	0	0	0	0	8-4	10	3	1.83	222
Mar 20	vs Nebraska		7.0	2	0	0	3	6	0	0	0	0	0	0	0	4-2	9	3	2.00	91
Mar 25	UMKC		5.0	5	0	0	1	8	0	0	0	0	0	0	0	10-0	10	3	1.87	65
Mar 26	vs UMKC		1.0	2	0	0	1	3	0	0	0	0	0	0	0	0-0				



24 Raegan Rogers

Blanchard, Okla.

Bridge Creek HS

OF	R/R	5-7	SO
----	-----	-----	----

Year	Avg	GP	GS	AB	R	H	2B	3B	HR	RBI	TB	SLG%	BB	HBP	SO	OB%	SF	SH	SB	ATT	PO	A	E	FLD%
2016	.250	36	0	4	13	1	0	0	0	0	1	.250	0	0	0	.250	0	0	3	3	0	0	0	.000
2017	-	-	-	-	-	-	-	-	-	-	-	-	-	-	-	-	-	-	-	-	-	-	-	-
TOTAL	.250	36	0	4	13	1	0	0	0	0	1	.250	0	0	0	.250	0	0	3	3	0	0	0	.000

2016 (Freshman)

- ▶ Played in 36 games, mostly as a pinch runner
- ▶ Scored 2 runs during the WCWS and scored in each game of the NCAA Regional (5/20-22)
- ▶ Recorded the first hit of her career against Radford (4/23)
- ▶ Had her first career stolen base and scored a run vs. Maryland (3/12)

High School

- ▶ Named her team's Offensive Player of the Year every season
- ▶ Hit .620 in her senior season with 53 runs scored, 38 runs batted in, 6 home runs and 36 stolen bases to be named to the Middle West All-State Team and All-Region First Team; also named Sooner Conference Defensive Player of the Year and earned a spot on the All-Conference Team

Travel Ball

- ▶ Played for GameTime Stars Gold out of Oklahoma City under Rusty Fisher
- ▶ Last two seasons saw her squads finish in a tie for 17th at the 16U Premier Girls Fastpitch National Championship
- ▶ Helped lead her team to the 2012 14U USSSA National Championship.

Personal

- ▶ Chose OU over Arkansas and Houston

Career Highs

R - 1, 13x, MR vs. Auburn, 6/7/16
 H - 1 vs. Radford, 4/23/16
 2B - N/A
 3B - N/A
 HR - N/A
 RBI - N/A
 BB - N/A
 SB - 1, 3x, MR vs. North Texas, 4/13/16
 HBP - N/A
 HITTING STREAK - N/A

Season Highs

R - N/A
 H - N/A
 2B - N/A
 3B - N/A
 HR - N/A
 RBI - N/A
 BB - N/A
 SB - N/A
 HBP - N/A
 HITTING STREAK - N/A

2016 Oklahoma Softball Individual Game-by-Game for Oklahoma (as of Feb 02, 2017)

#24 Rogers, Raegan - 36 games (All games)

Date	Opponent	Pos	AB	R	H	RBI	2B	3B	HR	BB	SB	CS	HBP	SAC	SF	GDP	K	PO	A	E	Avg	
Feb 13	vs Lamar	ph/of	1	0	0	0	0	0	0	0	0	0	0	0	0	0	0	0	0	0	0	.000
Feb 13	vs Syracuse	pr	0	0	0	0	0	0	0	0	0	0	0	0	0	0	0	0	0	0	0	.000
Feb 19	at New Mexico State	pr	0	0	0	0	0	0	0	0	0	0	0	0	0	0	0	0	0	0	0	.000
Feb 20	vs Western Michigan	of	0	0	0	0	0	0	0	0	0	0	0	0	0	0	0	0	0	0	0	.000
Feb 25	vs Utah	pr	0	0	0	0	0	0	0	0	0	0	0	0	0	0	0	0	0	0	0	.000
Mar 05	DARTMOUTH-2	pr	0	0	0	0	0	0	0	0	0	0	0	0	0	0	0	0	0	0	0	.000
Mar 11	SAINT LOUIS	pr	0	0	0	0	0	0	0	0	0	0	0	0	0	0	0	0	0	0	0	.000
Mar 11	BYU	pr	0	1	0	0	0	0	0	0	0	0	0	0	0	0	0	0	0	0	0	.000
Mar 12	MARYLAND	pr	0	1	0	0	0	0	0	0	1	0	0	0	0	0	0	0	0	0	0	.000
Mar 13	MARYLAND	pr/dh	0	0	0	0	0	0	0	0	0	0	0	0	0	0	0	0	0	0	0	.000
Mar 16	MINNESOTA	pr	0	1	0	0	0	0	0	0	0	0	0	0	0	0	0	0	0	0	0	.000
Mar 19	vs Grand Canyon	pr	0	0	0	0	0	0	0	0	0	0	0	0	0	0	0	0	0	0	0	.000
Mar 26	vs UMKC	of	0	0	0	0	0	0	0	0	0	0	0	0	0	0	0	0	0	0	0	.000
Mar 30	vs Oklahoma State	pr	0	0	0	0	0	0	0	0	0	0	0	0	0	0	0	0	0	0	0	.000
Apr 01	KANSAS	pr	0	0	0	0	0	0	0	0	0	0	0	0	0	0	0	0	0	0	0	.000
Apr 02	KANSAS	pr	0	0	0	0	0	0	0	0	0	0	0	0	0	0	0	0	0	0	0	.000
Apr 06	WICHITA STATE	pr	0	1	0	0	0	0	0	1	0	0	0	0	0	0	0	0	0	0	0	.000
Apr 13	NORTH TEXAS	pr	0	0	0	0	0	0	0	0	0	0	0	0	0	0	0	0	0	0	0	.000
Apr 15	TEXAS-1	pr	0	0	0	0	0	0	0	0	0	0	0	0	0	0	0	0	0	0	0	.000
Apr 16	TEXAS	pr	0	0	0	0	0	0	0	0	0	0	0	0	0	0	0	0	0	0	0	.000
Apr 23	at Tennessee	pr	0	1	0	0	0	0	0	0	0	0	0	0	0	0	0	0	0	0	0	.000
Apr 23	vs Radford	ph/of	1	0	1	0	0	0	0	0	0	0	0	0	0	0	0	0	0	0	0	.500
Apr 24	vs Lipscomb	pr/dh	0	0	0	0	0	0	0	0	0	0	0	0	0	0	0	0	0	0	0	.500
Apr 29	at Iowa State	pr	1	1	0	0	0	0	0	0	0	0	0	0	0	0	0	0	0	0	0	.333
May 01	at Iowa State	pr	0	1	0	0	0	0	0	0	0	0	0	0	0	0	0	0	0	0	0	.333
May 06	TEXAS TECH	pr	0	1	0	0	0	0	0	0	0	0	0	0	0	0	0	0	0	0	0	.333
May 08	TEXAS TECH	ph	1	0	0	0	0	0	0	0	0	0	0	0	0	0	0	0	0	0	0	.250
May 13	at Oklahoma State	pr	0	0	0	0	0	0	0	0	0	0	0	0	0	0	0	0	0	0	0	.250
May 14	OKLAHOMA STATE	pr	0	0	0	0	0	0	0	0	0	0	0	0	0	0	0	0	0	0	0	.250
May 20	WICHITA STATE	pr	0	1	0	0	0	0	0	0	0	0	0	0	0	0	0	0	0	0	0	.250
May 21	OLE MISS	pr	0	1	0	0	0	0	0	0	0	0	0	0	0	0	0	0	0	0	0	.250
May 22	OLE MISS	pr	0	1	0	0	0	0	0	0	0	0	0	0	0	0	0	0	0	0	0	.250
May 27	LOUISIANA-LAFAYET	pr	0	0	0	0	0	0	0	0	0	0	0	0	0	0	0	0	0	0	0	.250
Jun 05	vs LSU	pr	0	1	0	0	0	0	0	0	0	0	0	0	0	0	0	0	0	0	0	.250
Jun 07	vs Auburn	pr	0	1	0	0	0	0	0	0	0	0	0	0	0	0	0	0	0	0	0	.250
Jun 08	vs Auburn	pr	0	0	0	0	0	0	0	0	0	0	0	0	0	0	0	0	0	0	0	.250
Totals		Ogs	4	13	1	0	0	0	0	0	3	0	0	0	0	0	0	0	0	0	0	.250

On base pct. .250 • Slugging pct. .250



4

Hannah Sparks
 Thomasville, Ala.
 NW Florida State College

C	R/R	6-1	JR
---	-----	-----	----

Year	Avg	GP	GS	AB	R	H	2B	3B	HR	RBI	TB	SLG%	BB	HBP	SO	OB%	SF	SH	SB	ATT	PO	A	E	FLD%
2017	-	-	-	-	-	-	-	-	-	-	-	-	-	-	-	-	-	-	-	-	-	-	-	-
TOTAL	-	-	-	-	-	-	-	-	-	-	-	-	-	-	-	-	-	-	-	-	-	-	-	-

2016 (Sophomore at NWF State)

- ▶ Named to 2016 NJCAA Division I Softball All-America Second Team after hitting .401 with a .503 on-base percentage and .776 slugging percentage, 16 home runs, seven doubles, one triple, 48 RBI, 63 runs scored, 29 walks, 23 strikeouts and 20 stolen bases
- ▶ Behind the plate, made just one error in 351 chances for a .997 fielding percentage and threw out 14 of 27 stolen bases attempted against her

Personal

- ▶ Daughter of Kim C. Sparks and Cheryl O. Glass
- ▶ Intends to major in education

Why Oklahoma?

"I'm beyond excited to be a part of the program at OU. It all happened kind of fast and I never thought I would make it to a program like this one. From the time I stepped on campus back in April and met the players and the coaches, I felt right at home. I'm really excited to get this journey going."

Coach Gasso says:

"As a junior college catcher, Hannah fills a need for experience and depth behind the plate. She has all the tools both offensively and defensively to make an immediate impact for the Sooners."

Career/Season Highs

- R - N/A
- H - N/A
- 2B - N/A
- 3B - N/A
- HR - N/A
- RBI - N/A
- BB - N/A
- SB - N/A
- HBP - N/A
- HITTING STREAK - N/A



33 Vanessa Taukeiaho

Rancho Cucamonga, Calif.
Etiwanda HS

OF	R/R	5-5	FR
----	-----	-----	----

Year	Avg	GP	GS	AB	R	H	2B	3B	HR	RBI	TB	SLG%	BB	HBP	SO	OB%	SF	SH	SB	ATT	PO	A	E	FLD%
2017	-	-	-	-	-	-	-	-	-	-	-	-	-	-	-	-	-	-	-	-	-	-	-	-
TOTAL	-	-	-	-	-	-	-	-	-	-	-	-	-	-	-	-	-	-	-	-	-	-	-	-

High School

- ▶ Ranked in the Top 20 for the class of 2016
- ▶ Was her school's Offensive Player of the Year for each of her last two years and has been named the team's Defensive Player of the Year, as well

Travel Ball

- ▶ Played for the Explosion 18U team last summer in Irvine, Calif.

Personal

- ▶ Daughter of Angela Vargas and Dave Tautalafua and has three sisters, Melissa and Jessica Taukeiaho and Brianna Tautalafua, and two brothers, Darian and JD Tautalafua
- ▶ Sister, Melissa, was a two-time All-American at Cal State Fullerton
- ▶ Cousin, Uani Unga, played football at BYU and is now on the New York Giants
- ▶ Chose OU over Oregon, Arizona State and Cal State Fullerton
- ▶ last name pronounced TOK-ee-ah-HO

Why Oklahoma?

"The reason I chose Oklahoma is because the first time I stepped on the campus I instantly fell in love. I loved the atmosphere, and the people there are so nice. But what tied me into the program was definitely the coaching staff and the experiences the girls shared with me. I love how family-based it is, and they made me feel right at home; I instantly knew Oklahoma was the school for me after my visit. I am looking forward to growing and becoming a better athlete, as well as young lady, considering I will be on my own since my family lives back in California. I plan on leaving my mark at Oklahoma."

Coach Gasso says:

"Vanessa is a centerfielder who just has tremendous power. I've seen her come up clutch when needed. She's played in some great organizations and developed a presence at the plate is going to always pose a threat. She can change a game with one swing of the bat. She's a hard worker and a competitor. I'm really excited to have her."

Career/Season Highs

- R - N/A
- H - N/A
- 2B - N/A
- 3B - N/A
- HR - N/A
- RBI - N/A
- BB - N/A
- SB - N/A
- HBP - N/A
- HITTING STREAK - N/A



15 Lea Wodach

Coto de Caza, Calif.
Tesoro HS

C	R/R	5-7	JR
---	-----	-----	----

Year	Avg	GP	GS	AB	R	H	2B	3B	HR	RBI	TB	SLG%	BB	HBP	SO	OB%	SF	SH	SB	ATT	PO	A	E	FLD%
2015	.297	45	20	74	17	22	3	0	5	22	40	.541	6	0	5	.341	2	0	0	0	63	5	0	1.000
2016	.315	65	65	181	32	57	11	2	7	32	93	.514	23	0	14	.388	2	3	3	4	344	25	5	.987
2017	-	-	-	-	-	-	-	-	-	-	-	-	-	-	-	-	-	-	-	-	-	-	-	-
TOTAL	.310	110	85	255	49	79	14	2	12	54	133	.522	29	0	19	.375	4	3	3	4	407	30	5	.989

Career Honors

- ▶ 2016 Second Team All-Region honoree
- ▶ Named to 2016 Academic All-Big 12 First Team with a 4.0 GPA

2016 (Sophomore)

- ▶ Started all 65 games (45 at C, 19 in LF, 1 in CF)
- ▶ Threw out 11 of 16 stolen bases attempted against
- ▶ Had 2 hits in each game of the NCAA Super Regional against Louisiana-Lafayette, including 2 RBI and a triple in game two (5/26-27)
- ▶ Set or tied career high in hits, runs, doubles and stolen bases by going 4-5 with 2 doubles, 2 runs scored and a stolen base vs. No. 22 Minnesota (3/16)
- ▶ Hit 2 home runs (including an inside-the-parker), doubled, drove in 4 and had 3 hits against Oregon State (2/25)

2015 (Freshman)

- ▶ Played in 45 games with 20 starts (10 at DP, 8 at C, and 2 in RF)
- ▶ Hit a grand slam against Central Arkansas in the NCAA Regional (5/15)
- ▶ Went 3-4 with 2 home runs and career-high five RBI vs. Central Arkansas (3/31)
- ▶ First hit of career was a solo home run at Hawaii (2/7)

High School

- ▶ Ranked No. 88 on the Top 100 Players in the 2014 Class by StudentSports.com
- ▶ Also earned three letters in basketball, including being named conference MVP as a junior when she averaged a double-double and set school records for 3-pointers in a game, and points and rebounds in a season

Travel Ball

- ▶ Played for Corona Angels under Marty Tyson as a senior; spent the previous five seasons with the California Cruisers of Trabuco Canyon, Calif., under Phil Harman and Jim Wodach
- ▶ Team captured second place at the 18U ASA Champions Cup
- ▶ 16U California Cruisers finished fifth at the 2012 PGF Nationals and 17th at the 2011 ASA Nationals

Personal

- ▶ Daughter of Jim and Adele Wodach
- ▶ Chose OU over Stanford, Cal, San Diego State and San Diego
- ▶ Last name pronounced WO-dak

Career Highs

- R - 2, 10x, MR vs. Lipscomb, 4/24/16
- H - 4 vs. Minnesota, 3/16/16
- 2B - 2 vs. Minnesota, 3/16/16
- 3B - 1 vs. UMKC, 3/25/16
- HR - 2, 2x, MR vs. Oregon State, 2/25/16
- RBI - 5 vs. Central Arkansas, 3/31/15
- BB - 2, 5x, MR vs. Kansas, 4/1/16
- SB - 1, 3x, MR at Cal State Fullerton, 3/18/16
- HBP - N/A
- HITTING STREAK - 15, 2/20/16-3/16/16

Season Highs

- R - N/A
- H - N/A
- 2B - N/A
- 3B - N/A
- HR - N/A
- RBI - N/A
- BB - N/A
- SB - N/A
- HBP - N/A
- HITTING STREAK - N/A

2016 Oklahoma Softball
Individual Game-by-Game for Oklahoma (as of Feb 02, 2017)

#15 Wodach, Lea - 65 games (All games)

Date	Opponent	Pos	AB	R	H	2B	3B	HR	BB	CS	HBP	SAC	SF	GDP	K	PO	A	E	Avg			
Feb 12	vs Minnesota	of	2	0	1	0	0	0	0	0	0	0	0	0	1	1	0	0	.500			
Feb 12	vs Washington	of	4	0	1	0	0	0	0	0	0	0	0	0	1	2	1	0	.333			
Feb 13	vs Lamar	of	2	1	2	0	0	0	1	0	0	0	0	0	0	1	0	0	.375			
Feb 13	vs Syracuse	of	3	0	0	0	0	0	0	0	0	0	0	0	0	2	0	0	.273			
Feb 14	vs Long Beach State	of	3	0	1	1	0	0	0	0	0	0	0	0	1	3	1	0	.286			
Feb 19	vs Creighton	c	4	2	3	1	0	0	0	0	0	0	0	0	0	9	3	0	.389			
Feb 19	at New Mexico State	c	2	0	0	0	0	0	0	1	0	0	0	0	0	0	0	0	.350			
Feb 20	vs Western Michigan	c	3	1	2	2	1	0	0	0	0	0	0	0	0	5	1	0	.391			
Feb 20	at New Mexico State	c	3	1	2	2	0	0	1	0	0	0	0	0	0	8	0	0	.423			
Feb 25	vs Oregon State	of	4	2	3	4	1	0	2	0	0	0	0	0	0	3	0	0	.467			
Feb 25	vs Utah	of	4	1	0	0	0	0	4	1	0	0	0	0	0	0	0	0	.441			
Feb 26	vs Michigan	of	3	2	1	0	0	0	2	0	0	0	0	0	0	1	2	0	.432			
Feb 26	vs Fresno State	of	3	0	1	1	0	0	0	0	1	0	0	0	0	1	3	0	.425			
Feb 27	vs UCLA	of	4	1	1	0	0	0	1	0	0	0	0	0	0	1	1	0	.409			
Mar 05	DARTMOUTH-1	of	2	2	1	2	0	0	1	0	0	0	0	0	0	1	0	0	.413			
Mar 05	DARTMOUTH-2	of	1	0	1	0	0	0	2	0	0	0	0	0	0	4	0	0	.426			
Mar 11	SAINT LOUIS	of	3	2	3	3	1	0	1	1	0	0	0	0	0	0	0	0	.460			
Mar 11	BYU	of	2	1	1	0	0	0	0	0	0	0	0	0	0	0	0	0	.462			
Mar 12	BYU	of	5	1	1	0	0	0	0	0	0	0	0	0	0	1	0	0	.455			
Mar 12	MARYLAND	of	2	2	2	0	0	0	2	0	0	0	0	0	0	2	0	0	.474			
Mar 13	MARYLAND	of	3	0	1	0	0	0	1	0	0	0	0	0	0	2	0	0	.467			
Mar 16	MINNESOTA	of	2	4	0	2	0	0	0	0	0	0	0	0	0	0	0	0	.458			
Mar 18	vs DePaul	of	3	0	0	1	0	0	0	0	0	0	0	0	0	7	0	0	.471			
Mar 18	at Cal State Fullerton	of	3	1	1	0	0	0	1	1	0	0	0	0	0	1	5	0	.465			
Mar 19	vs Grand Canyon	of	1	0	0	0	0	0	0	0	0	0	0	0	0	0	0	0	.475			
Mar 19	vs Alabama	of	3	0	0	0	0	0	0	0	0	0	0	0	0	2	2	0	.440			
Mar 20	vs Nebraska	of	3	0	1	0	0	0	0	0	0	0	0	0	0	2	0	0	.436			
Mar 25	UMKC	c	3	0	1	0	0	0	1	0	0	0	0	0	0	8	0	0	.432			
Mar 26	vs UMKC	c	3	1	0	0	0	0	0	0	0	0	0	0	0	8	0	1	.417			
Mar 30	vs Oklahoma State	c	3	0	1	1	0	0	0	0	0	0	0	0	0	4	1	0	.414			
Apr 01	KANSAS	c	2	1	0	0	0	0	2	0	0	0	0	0	0	9	0	0	.404			
Apr 02	KANSAS	c	3	0	0	0	0	0	0	0	0	0	0	0	0	6	0	0	.391			
Apr 03	KANSAS	c	0	0	0	0	0	0	0	0	0	0	0	0	0	12	1	0	.391			
Apr 06	WICHITA STATE	c/ph	1	0	1	0	0	0	0	0	0	0	0	0	0	5	0	0	.398			
Apr 08	at Baylor	c	2	0	0	0	0	0	0	0	0	0	0	0	1	0	0	0	.389			
Apr 09	at Baylor	c	4	0	0	0	0	0	0	0	0	0	0	0	0	1	6	0	.374			
Apr 10	at Baylor	c	4	0	0	0	0	0	0	0	0	0	0	0	0	4	1	1	.359			
Apr 13	NORTH TEXAS	c	3	0	0	0	0	0	0	0	0	0	0	0	0	10	1	0	.349			
Apr 15	TEXAS-1	c	2	0	0	0	0	0	0	0	0	0	0	0	0	8	0	0	.342			
Apr 15	TEXAS-2	c	2	1	0	0	0	0	1	0	0	0	0	0	0	0	0	0	.345			
Apr 16	TEXAS	c	2	0	0	0	0	0	0	0	0	0	0	0	0	10	2	0	.339			
Apr 20	at Arkansas	c	4	0	1	0	0	0	0	0	0	0	0	0	0	7	1	0	.336			
Apr 23	at Tennessee	c	4	0	1	2	1	0	0	0	0	0	0	0	0	6	2	0	.333			
Apr 23	vs Radford	c	2	1	1	1	0	0	0	0	0	0	0	0	1	0	0	0	.336			
Apr 24	vs Lipscomb	c	2	2	1	0	0	0	1	0	0	0	0	0	0	12	0	0	.339			
Apr 29	at Iowa State	c	2	0	0	0	0	0	0	0	0	0	0	0	0	8	1	0	.333			
Apr 29	at Iowa State	c	3	0	1	0	0	0	0	0	0	0	0	0	0	1	8	1	.333			
May 01	at Iowa State	c	4	0	0	0	0	0	1	0	0	0	0	0	1	1	0	0	.323			
May 04	at Tulsa	c	2	0	0	0	0	0	1	0	0	0	0	0	0	2	11	0	.319			
May 06	TEXAS TECH	c	3	1	2	1	0	0	0	0	0	0	0	0	0	0	8	1	.326			
May 07	TEXAS TECH	c	3	1	2	0	0	0	1	0	0	0	0	0	0	9	1	0	.326			
May 08	TEXAS TECH	c	1	0	0	0	0	0	1	0	0	0	0	0	0	5	0	0	.324			
May 13	at Oklahoma State	c	3	0	2	0	0	0	0	0	0	0	0	0	0	7	0	0	.331			
May 14	OKLAHOMA STATE	c	3	1	1	0	0	0	0	0	0	0	0	0	0	1	0	0	.331			
May 20	WICHITA STATE	c	3	0	1	1	1	0	0	0	0	0	0	0	0	10	0	0	.331			
May 21	OLE MISS	c	2	0	0	0	0	0	0	0	0	0	0	0	0	6	1	0	.327			
May 22	OLE MISS	c	2	0	0	0	0	0	0	0	0	0	1	0	0	5	1	0	.323			
May 26	LOUISIANA-LAFAYET	c	4	0	2	1	0	0	0	0	0	0	0	0	0	1	7	0	.329			
May 27	LOUISIANA-LAFAYET	c	4	1	2	2	0	1	0	0	0	0	0	0	0	2	0	0	.333			
Jun 02	vs Alabama	c	3	0	0	0	0	0	0	0	0	0	0	0	0	1	7	0	.327			
Jun 04	vs Michigan	c	4	0	0	0	0	0	0	0	0	0	0	0	0	1	0	0	.320			
Jun 05	vs LSU	c	4	0	1	0	0	0	0	0	0	0	0	0	0	4	0	1	.318			
Jun 06	vs Auburn	c	2	0	0	0	0	0	0	0	0	0	0	0	0	2	1	0	.314			
Jun 07	vs Auburn	c	4	0	1	0	0	0	0	0	0	0	0	0	0	5	1	0	.314			
Jun 08	vs Auburn	c	2	0	1	0	0	0	1	0	0	0	0	0	0	0	0	0	.312			
Totals			69gs	181	32	57	32	11	2	7	23	3	1	0	3	2	2	14	344	25	5	.989

On base pct. .388 • Slugging pct. .514



#1 NICOLE PENDLEY
Jr. | OF | 5-5
Rio Rancho, N.M.



#2 SYDNEY ROMERO
So. | INF | 5-7
San Diego, Calif.



#3 KELSEY ARNOLD
Jr. | INF | 5-2
Tulsa, Okla.



#4 HANNAH SPARKS
Jr. | C | 6-1
Thomasville, Ala.



#6 MACEY HATFIELD
Sr. | UTL | 5-7
Maysville, Okla.



#8 PAIGE PARKER
Jr. | LHP | 5-11
Independence, Mo.



#11 NICOLE MENDES
Fr. | UTL | 5-7
Houston, Texas



#14 PAIGE LOWARY
Jr. | LHP | 5-10
Dallas Center, Iowa



#15 LEA WODACH
Jr. | C | 5-7
Coto de Caza, Calif.



#17 SHAY KNIGHTEN
So. | INF | 5-6
Buena Park, Calif.



#18 MELANIE OLMOS
Fr. | RHP | 5-5
Riverside, Calif.



#20 CALEIGH CLIFTON
So. | INF | 5-8
Wayne, Okla.



#22 ALISSA DALTON
Fr. | INF | 5-7
Cypress, Texas



#24 RAEGAN ROGERS
So. | OF | 5-4
Blanchard, Okla.



#27 KYLIE LUNDBERG
So. | OF | 6-0
Lakwood, Calif.



#33 VANESSA TAUKEIAHO
Fr. | OF | 5-4
Rancho Cucamonga, Calif.



#34 FALE AVIU
So. | OF | 5-4
Oceanside, Calif.



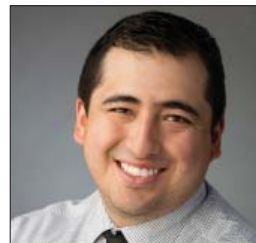
#42 MARIAH LOPEZ
Fr. | RHP | 5-8
Saugus, Calif.



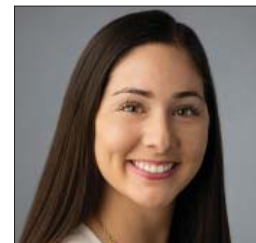
PATTY GASSO
Head Coach



MELYSSA LOMBARDI
Associate Head Coach



JT GASSO
Assistant Coach



Andrea Gasso
Volunteer Assistant Coach

2016 Oklahoma Softball
Overall Statistics for Oklahoma (as of Jun 10, 2016)
(All games Sorted by Batting avg)

Record: 57-8 Home: 24-2 Away: 12-1 Neutral: 21-5 Big 12: 17-1

Player	avg	gp-gs	ab	r	h	2b	3b	hr	rbi	tb	slg%	bb	hp	so	gdp	ob%	sf	sh	sb-att	po	a	e	fld%
Knighthen, Shay	.397	60-56	179	48	71	10	0	13	62	120	.670	17	1	23	0	.449	1	1	9-12	179	27	5	.976
Arnold, Kelsey	.382	65-65	152	46	58	3	0	0	8	61	.401	7	3	13	0	.417	1	12	15-16	98	105	4	.981
Miller, Erin	.378	65-65	217	57	82	22	3	9	52	137	.631	26	5	25	0	.454	1	2	10-15	47	1	2	.960
Aviu, Fale	.355	61-55	172	38	61	8	0	8	50	93	.541	12	6	10	1	.409	3	0	5-10	23	0	0	1.000
Clifton, Caleigh	.351	60-55	131	51	46	8	3	5	39	75	.573	39	16	16	1	.540	1	4	14-18	98	69	2	.988
Romero, Sydney	.346	64-63	211	50	73	14	3	10	39	123	.583	19	2	4	1	.403	1	1	6-8	85	88	3	.983
Self, Kady	.345	65-64	177	35	61	13	0	4	35	86	.486	24	0	17	0	.421	1	4	6-6	165	7	2	.989
Pendley, Nicole	.321	65-64	184	38	59	7	2	8	40	94	.511	18	2	27	0	.385	1	1	7-9	73	2	1	.987
Wodach, Lea	.315	65-65	181	32	57	11	2	7	32	93	.514	23	0	14	2	.388	2	3	3-4	344	25	5	.987

Finney, Brittany	.500	5-1	4	0	2	0	0	0	0	2	.500	0	0	0	0	.500	0	0	0-0	0	2	1	.667
Nirschl, Tori	.364	32-5	33	3	12	1	0	1	10	16	.485	5	1	5	0	.450	1	0	0-0	0	0	0	.000
Montgomery, Whitney	.364	23-20	33	10	12	0	0	1	7	15	.455	0	2	9	0	.400	0	2	2-2	118	11	0	1.000
Hatfield, Macey	.350	42-4	40	6	14	1	0	2	11	21	.525	4	0	4	0	.400	1	0	0-0	4	3	0	1.000
Lundberg, Kylie	.333	13-0	12	0	4	2	0	0	0	6	.500	1	0	1	0	.385	0	0	0-0	0	0	0	.000
Parker, Paige	.286	17-15	28	3	8	0	0	1	3	11	.393	9	0	8	1	.459	0	0	0-0	0	20	3	.870
Townsend, Paris	.250	39-1	40	5	10	0	0	1	8	13	.325	4	3	11	0	.362	0	0	0-0	43	0	0	1.000
Rogers, Raegan	.250	36-0	4	13	1	0	0	0	0	1	.250	0	0	0	0	.250	0	0	3-3	0	0	0	.000
Totals	.351	65	1798	435	631	100	13	70	396	967	.538	208	41	187	6	.427	14	30	80-103	1282	382	28	.983
Opponents	.204	65	1538	155	313	53	6	37	144	489	.318	149	28	433	5	.284	9	24	8-22	1202	510	88	.951

LOB - Team (454), Opp (312). DPs turned - Team (23), Opp (29). CI - Team (1), Wodach, Lea 1. IBB - Team (2), Romero, S. 2, Opp (5). Picked off - Pendley, N. 1, Wodach, Lea 1.

(All games Sorted by Earned run avg)

Player	era	w-l	app	gs	cg	sho	sv	ip	h	r	er	bb	so	2b	3b	hr	b/avg	wp	hp	bk	sfa	sha	
Parker, Paige	1.64	38-3	47	36	32	14/3	0	252.1	174	69	59	68	269	30	3	21	.194	8	10	0	4	17	
Chestnut, Jayden	3.23	9-1	23	4	2	2/1	0	73.2	73	34	34	28	52	15	1	8	.259	4	3	2	3	2	
Stevens, Kelsey	3.56	9-4	24	20	3	1/4	0	82.2	55	46	42	40	93	6	2	8	.186	15	15	0	2	3	

Finney, Brittany	1.12	1-0	9	4	0	0/4	1	18.2	11	6	3	13	19	2	0	0	.175	2	0	0	0	2	
Totals	2.26	57-8	65	65	37	22/5	1	427.1	313	155	138	149	433	53	6	37	.204	29	28	2	9	24	
Opponents	6.25	8-57	65	65	25	1/0	0	400.2	631	435	358	208	187	100	13	70	.351	35	41	3	14	30	

PB - Team (7), Wodach, Lea 6, Montgomery 1, Opp (11). Pickoffs - Team (1), Montgomery 1, Opp (2). SBA/ATT - Wodach, Lea (5-16), Parker, P. (7-15), Montgomery (3-6), Stevens, K. (0-4), Chestnut, J. (1-2), Finney, B. (0-1).